

Temple Road, TW9

£4,300 Per calendar month

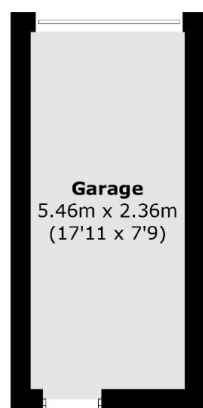
A beautiful three bedroom end of terrace house arranged over three floors offers, separate kitchen, reception room opening onto a beautiful rear garden, two modern bathrooms, separate WC and off street parking.

Temple Road is a quiet residential road well located for North Sheen station, Kew Gardens station for commuters and all the amenities of Kew Village.

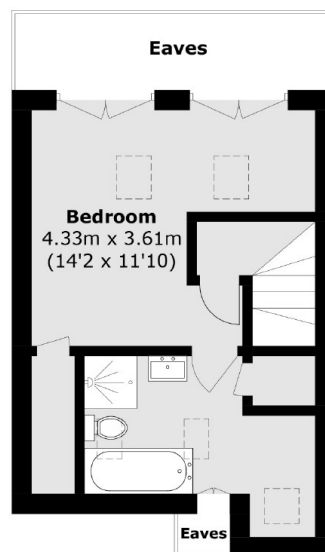
Features

- Three Bedrooms
- Terrace House
- Generous Living Space
- Modern Bathrooms
- Patio Garden
- Off Street Parking

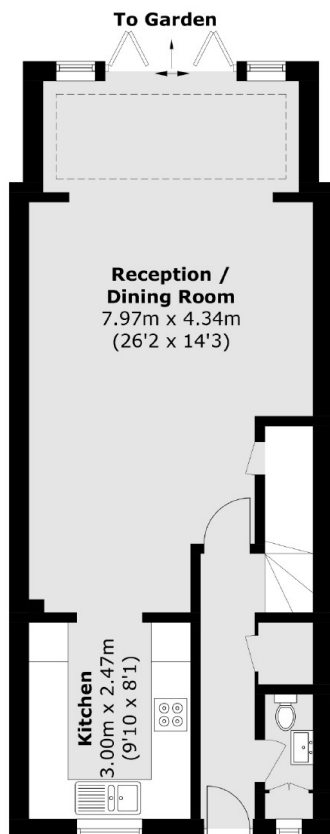
Temple Road, Kew, TW9



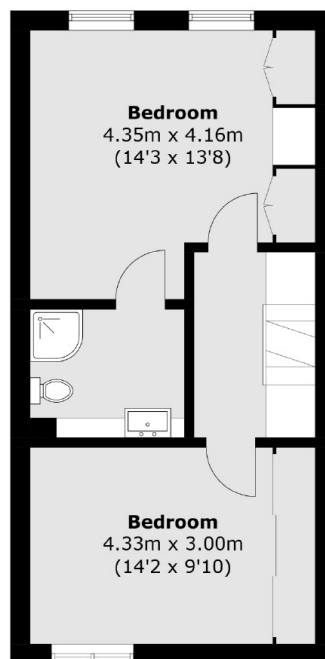
(Not Shown In Actual
Location / Orientation)



Second Floor



Ground Floor



First Floor

Total area (approx.): 115.7 sq. m (1,245.3 sq. ft)
(Excluding Eaves)

Garage area (approx.): 13.0 sq. m (139.9 sq. ft)