



## Temple Road, TW9

£2,200 Per calendar month

A beautifully presented first floor purpose built apartment offering 583 sq ft of accommodation with the benefit of a large private garden. The property is conveniently situated for the local amenities of Kew Village and for North Sheen Recreational Ground.

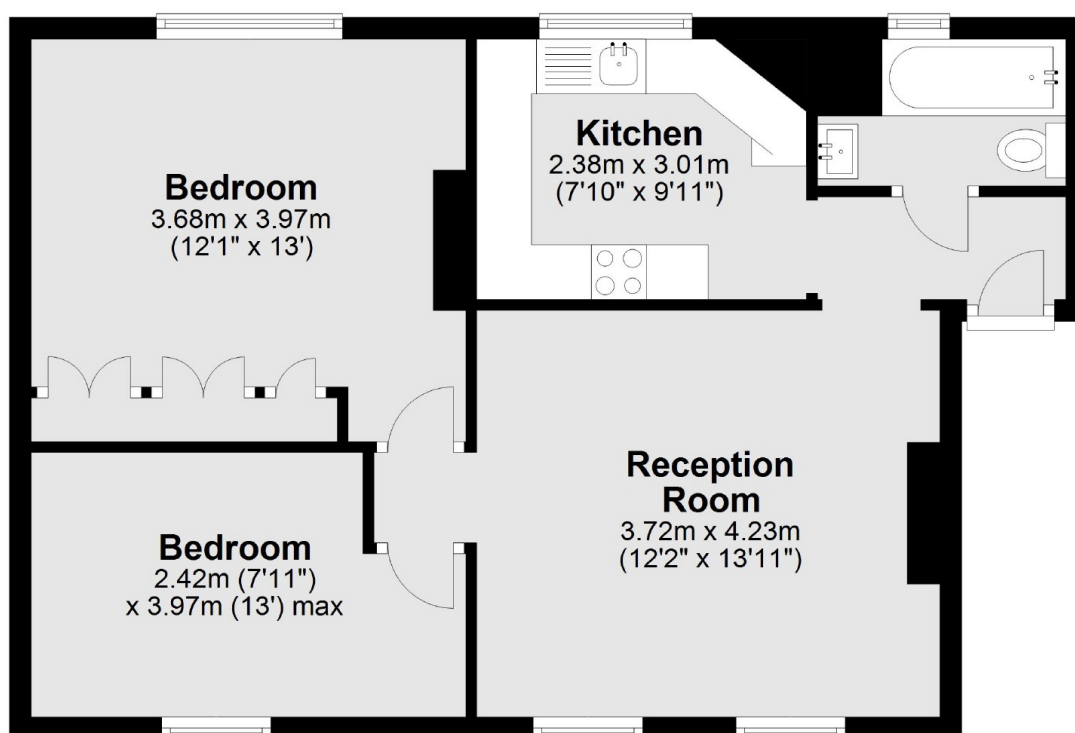
Temple Road is ideally located for Richmond Park and Royal Botanic Gardens Kew. The commuter is equally well catered for with Richmond, Kew Gardens and North Sheen stations close to hand with additional excellent bus services to Central London.

### Features

- First Floor Apartment
- Modern Throughout
- Two Double Bedrooms
- Private Rear Garden
- Excellent Location
- Unfurnished

# Temple Road, Kew, TW9

## First Floor



Total area: approx. 54.2 sq. metres (583.4 sq. feet)