



Kew Green, TW9

£3,800 Per calendar month

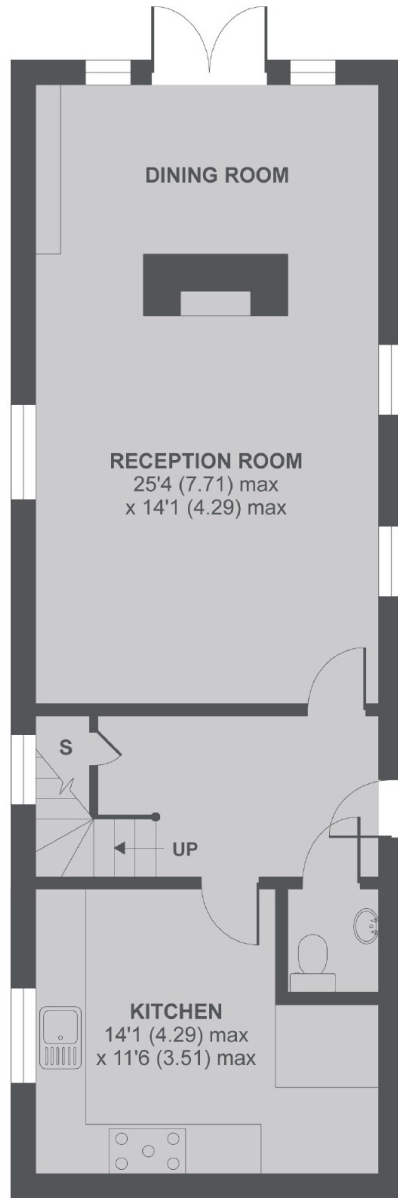
With views of the open spaces of Kew Green, this beautifully presented three bedroom cottage is kept to a modern finish throughout and offers a light and airy reception room with stunning wood beams.

Overlooking Kew Green and a short walk away from both Kew Village with Kew Gardens Station, and Kew Bridge with easy access for the A4/M4.

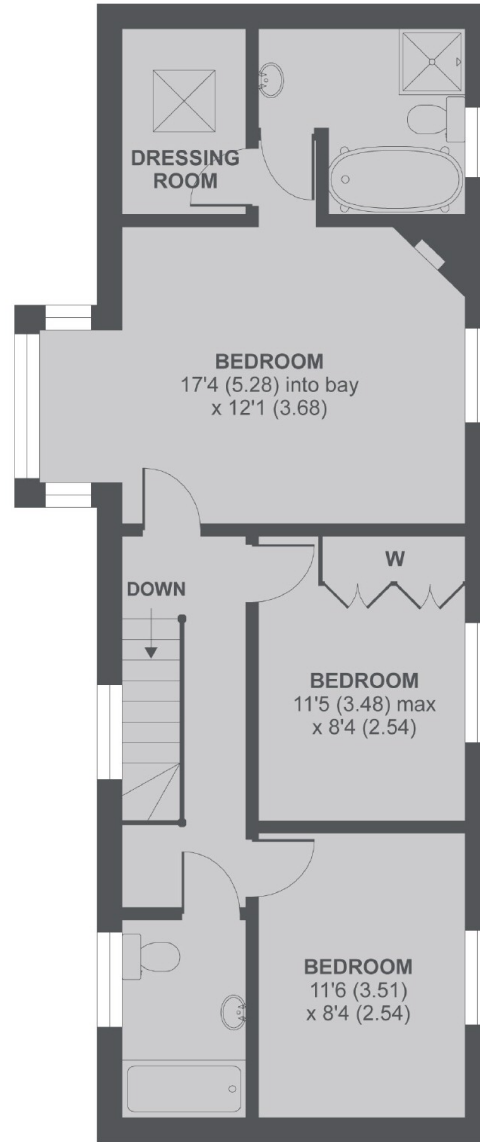
Features

- Unique Family Home
- Three Bedrooms
- Excellent Location
- Wooden Floors Throughout
- Private Patio Garden
- Original Features

Kew Green, Kew, TW9



Ground Floor



1st Floor

Earls Lodge TW9

MAIN HOUSE APPROX FLOOR AREA 1237 SQ.FT 114.9 SQ.M

Copyright nichecom.co.uk 2018 REF : 257679

Dexters

Kew
2 Mortlake Terrace
London
TW9 3DT
Lettings
020 8939 6071

Energy Rating: E. We aim to make our particulars both accurate and reliable. However they are not guaranteed; nor do they form part of an offer or contract. If you require clarification on any points then please contact us, especially if you're traveling some distance to view. Please note that appliances and heating systems have not been tested and therefore no warranties can be given as to their good working order.



dexters.co.uk