



## Temple Road, TW9

£2,975 Per calendar month

A bright and spacious two bedroom house set in a quiet location in central Kew which offers a modern kitchen, large reception room and a patio garden.

Temple Road is ideally located for Richmond Park and Royal Botanic Gardens Kew. The commuter is equally well catered for with Richmond, Kew Gardens and North Sheen stations close to hand with additional excellent bus services to Central London.

### Features

- Two Bedrooms
- Modern Kitchen
- Large Reception Room
- Quiet Location
- Patio Garden
- Central Kew





## Temple Road, TW9

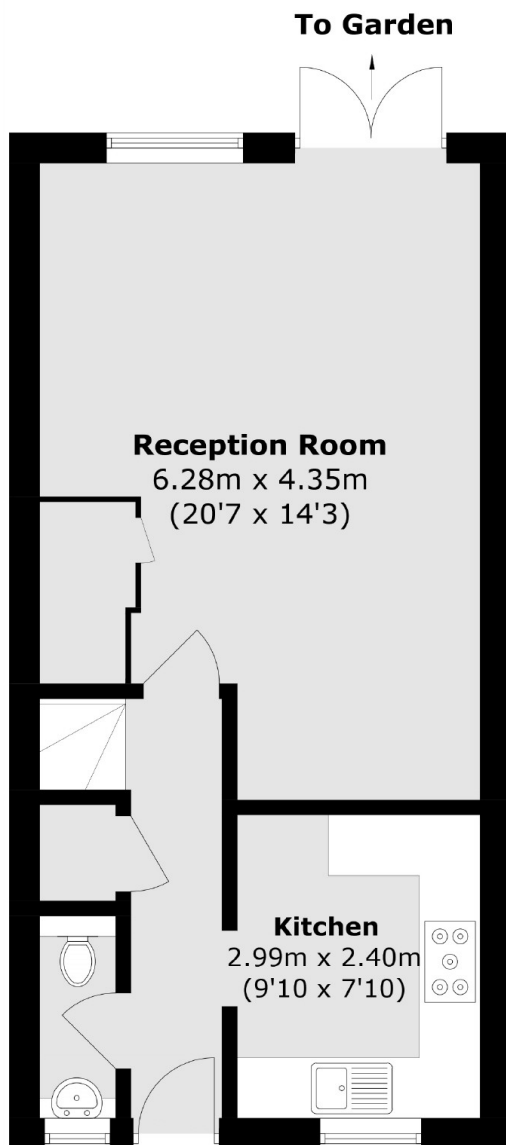
The ground floor accommodation consists of an entrance hall, a modern kitchen, a downstairs W.C and a spacious reception room with doors leading out onto the patio garden.

The first floor accommodation consists of a landing, two double bedrooms with built-in wardrobes and a good-size family bathroom.

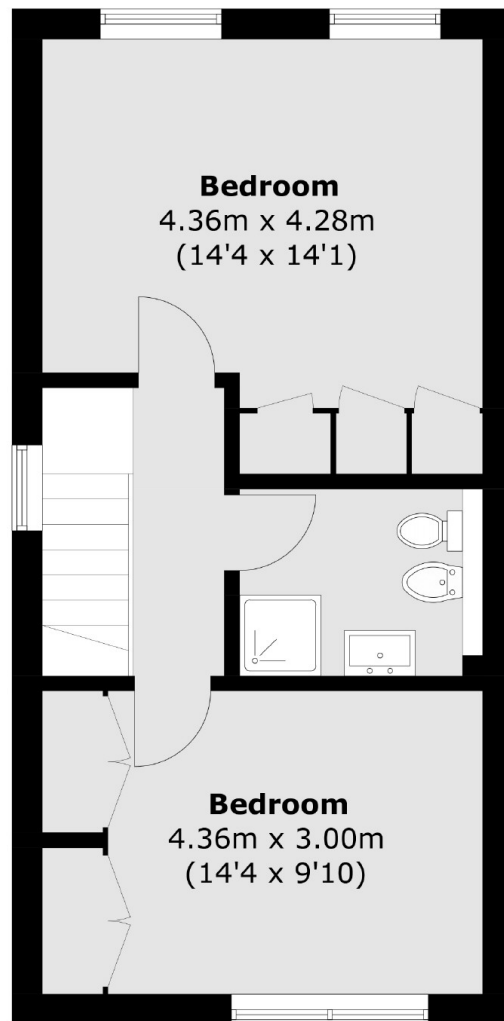




# Temple Road, Richmond, TW9



**Ground Floor**



**First Floor**

Total area (approx.): 82.6 sq. m (889.1 sq. ft)