



Chaucer Avenue, TW9

£2,995 Per calendar month

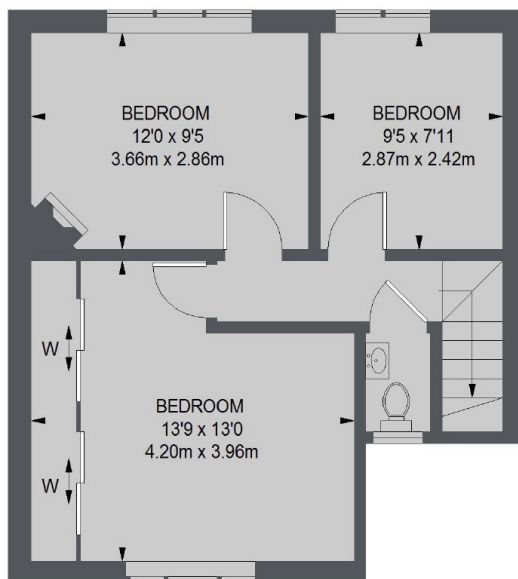
A well-presented three bedroom family home with a spacious front reception room, a modern fitted kitchen with patio doors that lead onto a beautiful rear garden.

Location close to Kew Village, Kew Gardens and North Sheen station where the trains can take you straight into the the hustle and bustle of Central London.

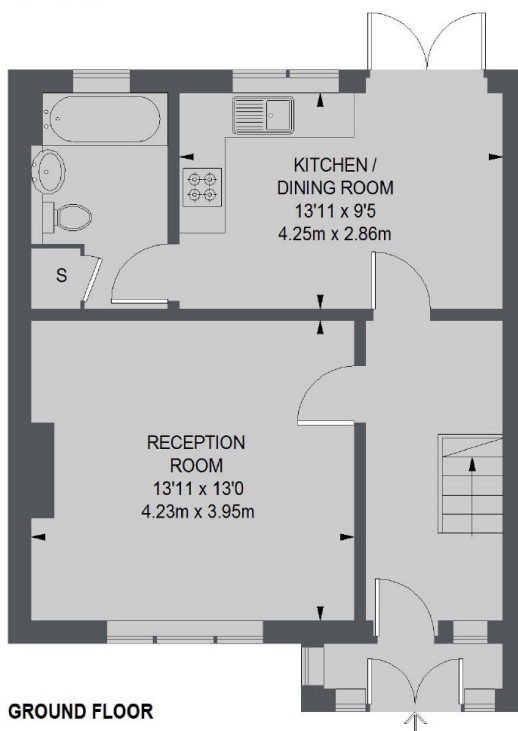
Features

- Three Double Bedrooms
- Spacious Living Room
- Eat-In Kitchen
- Large Rear Garden
- Modern Bathroom
- Wood Floors

Chaucer Avenue, Richmond, TW9



FIRST FLOOR



GROUND FLOOR

TOTAL APPROX. FLOOR AREA
921 SQ. FT. (85.56 SQ. M.)