



West Park Avenue, TW9

£4,000 Per calendar month

A lovely and substantial five bedroom family home on a popular road a very short distance from the shops, restaurants and cafes in Kew Village, and Kew Gardens tube station.

If you are looking for a home close to transport links, schools and excellent amenities this is the house for you. Kew Village, the River Thames and the Royal Botanical Gardens are all just a short walk away.

Features

- Five Bedrooms
- Double Reception Room
- Fitted Kitchen
- Beautiful Rear Garden
- Two Bathrooms
- Family Home



West Park Avenue, TW9

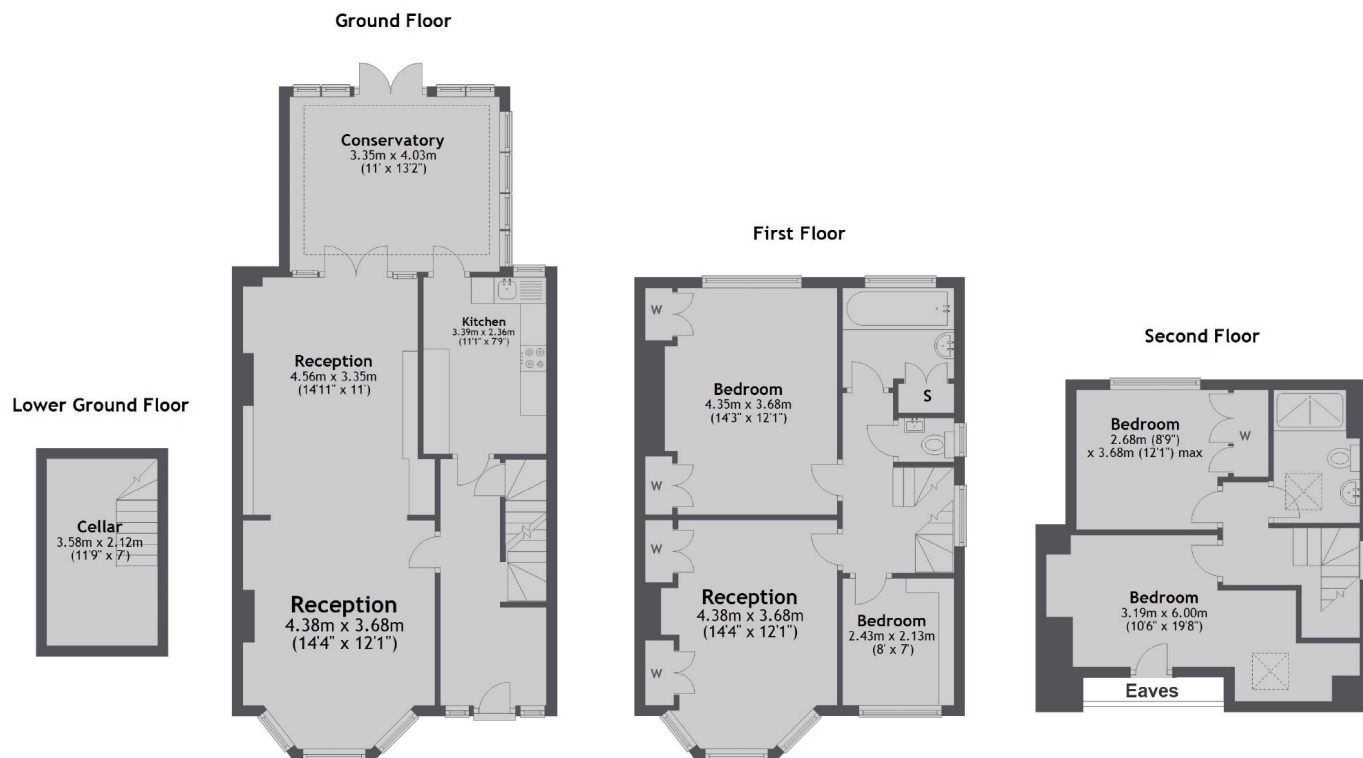
There is spacious and well presented accommodation over three floors providing fantastic space for a family.

On the ground floor there is a large double reception room, kitchen, superb conservatory leading onto the lovely private garden.

On the first floor there are two double bedrooms, further single bedroom/study, and family bathroom. On the top floor there are two more double bedrooms and a shower room.



West Park Avenue, Richmond, TW9



Total area: approx. 152.2 sq. metres (1637.8 sq. feet)