



## Princes Road, SW14

£2,600 Per calendar month

**Dexters**



## Princes Road, SW14

A well presented Victorian two double bedroom cottage has been recently redecorated throughout and offers a reception room, two bathrooms and a south facing patio garden.

This two bedroom cottage offers an entrance lobby, a reception room with large bay window, dining room, conservatory, modern kitchen with new appliances, a shower room/WC on the ground floor.

The property further offers two good sized double bedrooms and modern bathroom on the first floor. There is also a private south-facing courtyard garden provides a secluded, low maintenance space, perfect for entertaining and relaxing.

Situated close to the shops, restaurants, bars and other amenities of East Sheen, with Mortlake mainline station also close by. It is also in the catchment area for the ever-popular East Sheen Primary School.

Princes Road, located in the sought after 'Royal Roads', is just off Upper Richmond Road West, close to all the amenities, pubs, and restaurants of East Sheen as well as Mortlake train station.

### Features

- Two Bedroom Cottage
- Two Bathrooms
- Modern Kitchen
- South Facing Garden
- Plenty of Storage
- Recently Redecorated





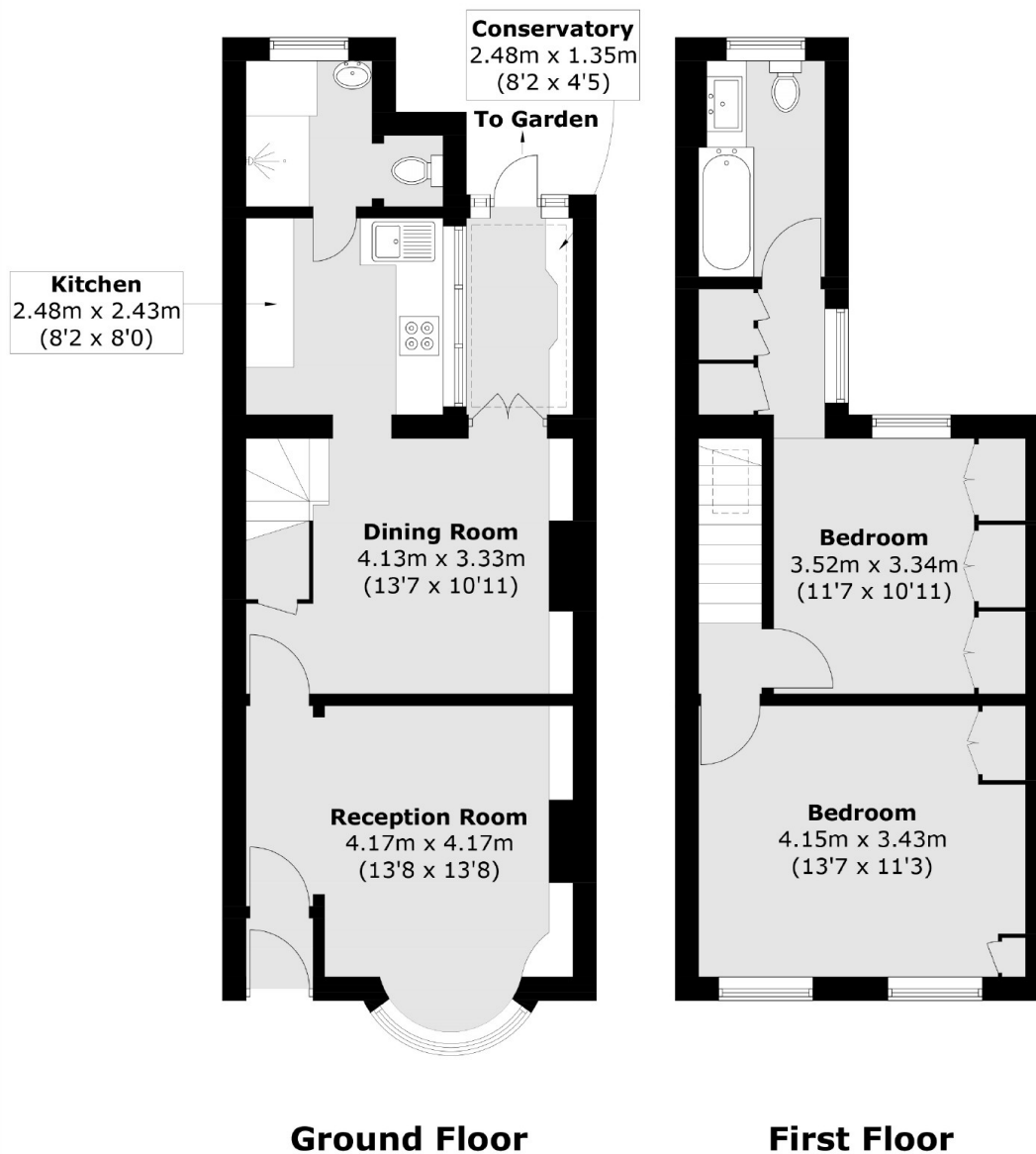








# Princes Road, London, SW14



Total area (approx.): 81.5 sq. m (877.2 sq. ft)