



Chelwood Gardens, TW9

£4,995 Per calendar month

Dexters



Chelwood Gardens, TW9

A semi detached family home offering substantial living accommodation including three reception rooms, a modern kitchen, two bathrooms, off street parking and a large rear west facing garden.

The property is set over two floors, the ground floor has an entrance hallway, a large open plan reception room, which leads onto the garden room and out into the large garden.

There is a modern kitchen / dining room, a downstairs Utility room and a bedroom or additional living space to the front of the property. On the first floor there are four bedrooms, one with an ensuite bathroom and a further family-size bathroom.

Chelwood Gardens is close to many outstanding schools including, The Kings Church of England Primary School, Kew Riverside and Kew College Prep.

Chelwood Gardens is a quiet residential road well located for Kew Gardens station and the amenities of Kew Village.

Features

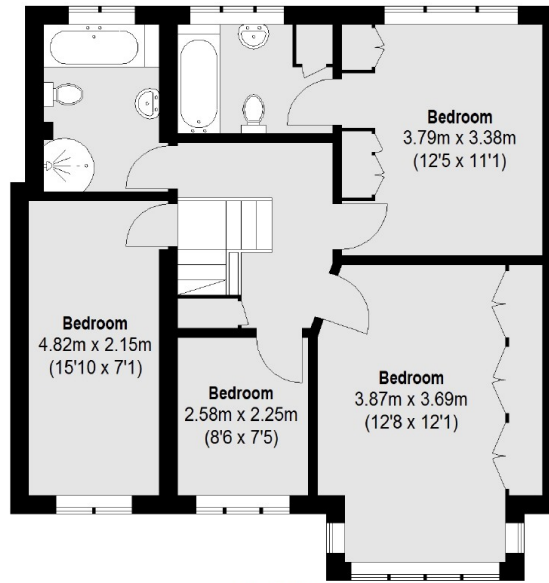
- Family Home
- Three Reception Rooms
- Four Bedrooms
- Two Bathrooms
- Off-Street Parking
- Large Rear Garden



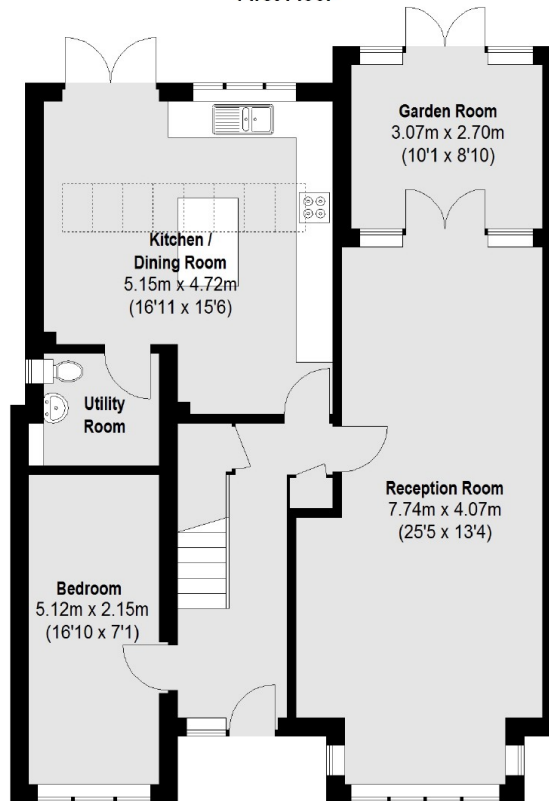




Chelwood Gardens, Kew, TW9



First Floor



Ground Floor

Total area (approx.): 160.06 sq. m (1723 sq. ft)