

OPENING DOORS SINCE 1843

Loveitts est. 1843  
THE ESTATE AGENTS



Mill Farm Park, Bedworth, CV12 9SE  
£120,000



## Mill Farm Park Bedworth, CV12 9SE

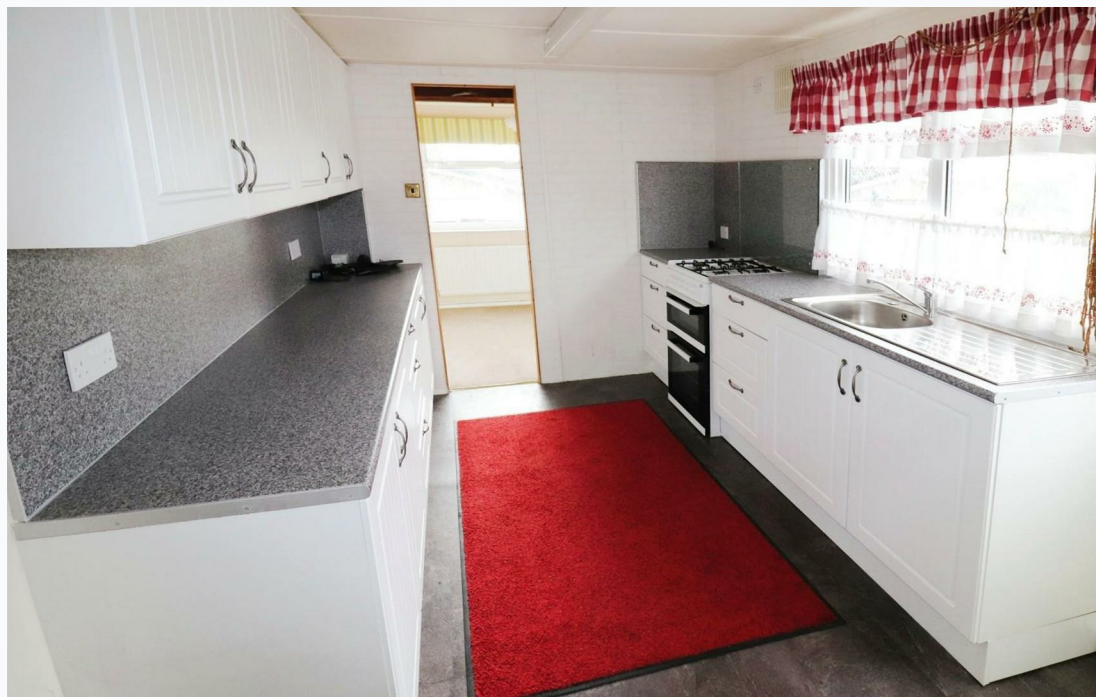
This spacious park home is located on the much sought after Mill Farm Park development in Bulkington for over 50s. In brief the accommodation comprises entrance hall with fitted cupboards and panelled doors leading to the spacious L shaped lounge/dining room.

The kitchen has a range of modern units eye and base level units. Three bedrooms with the two main bedrooms having a range of fitted wardrobes and a third bedroom/study room. Shower room having a shower cubicle with Triton electric shower, vanity unit with hand wash basin and a low level W.C.

The property also benefits from gas central heating and PVCu double glazing. Outside there are enclosed gardens which are laid to lawn a paved patio area and outside store. There is also a vehicle parking space for the occupant and further visitor parking spaces located on the development.

Internal viewing is highly recommended and the park home is also being offered for sale with no upward chain.

**FURTHER INFORMATION** Service charge of £157.17 also Electricity is paid to Tingdene who own the site. which will be confirmed by the solicitor.





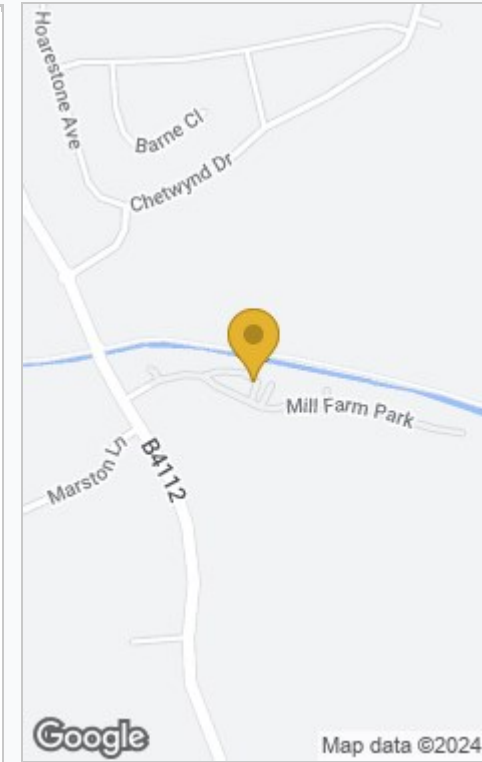
- Spacious Park Home
- Popular Bulkington Development
- Lounge/Dining Room
- Kitchen With Modern Units
- Two Main Bedrooms With Fitted Wardrobes
- Study/Bedroom Three
- GFCH & PVCu Double Glazing
- Allocated vehicle Parking Space
- Over 50s Only Development
- No Upward Chain



## Floor Plan



## Area Map



Total floor area 68.3 m<sup>2</sup> (736 sq.ft.) approx

This plan is for illustration purposes only and may not be representative of the property. Plan not to scale. Powered by PropertyBox

These particulars, whilst believed to be accurate are set out as a general outline only for guidance and do not constitute any part of an offer or contract. Intending purchasers should not rely on them as statements of representation of fact, but must satisfy themselves by inspection or otherwise as to their accuracy. No person in this firm's employment has the authority to make or give any representation or warranty in respect of the property.



Nuneaton  
39 Church Street, Nuneaton CV11 4AD  
024 7634 7676

Registered in England & Wales Company no. 7558151