



Cambridge Terrace, Berkhamsted HP4 2EH



This attractive double fronted cottage offers spacious and versatile accommodation including a large open plan living/ dining room boasting two beautiful original fireplaces, built in shelving storage and wooden flooring. The living area also has a patio door out to the beautiful rear garden. The unique inner hallway area leads to the kitchen and downstairs WC and provides natural light through a large double glazed window/door, looking out onto an additional outside space. The kitchen features tiled flooring and a double glazed sash window. Upstairs the two spacious bedrooms both benefit from fitted wardrobes whilst the master bedroom features a fireplace and its own en-suite bathroom. Outside you will find a beautifully enclosed south facing rear garden with a patio, mainly laid to lawn and separate access to the front of the property.





welcome to Cambridge Terrace, Berkhamsted

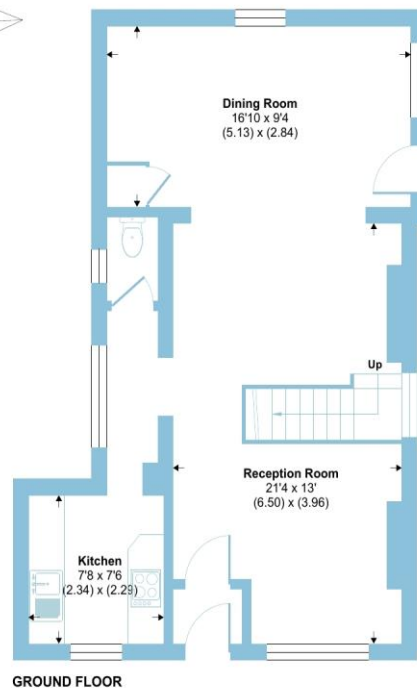
- Detached
- Double Fronted Character Cottage
- Chain Free
- Two Bedrooms
- Large Open Living Space

Tenure: Freehold EPC Rating: E

Price

£650,000

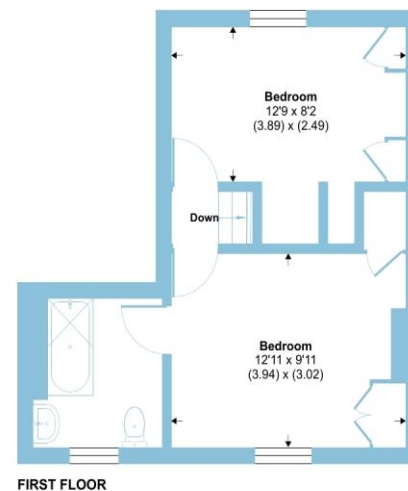
Introducing Cambridge Terrace, a spacious and charming detached character property nestled in a secluded cul de sac in the heart of Berkhamsted with the added benefit of being offered for sale on a CHAIN FREE basis.



Cambridge Terrace, Berkhamsted, HP4

Approximate Area = 898 sq ft / 83.4 sq m

For identification only - Not to scale



Floor plan produced in accordance with RICS Property Measurement Standards incorporating International Property Measurement Standards (IPMS2 Residential). © richcom 2024. Produced for Brown & Merry. REF: 1093816



check out more properties at [brownandmerry.co.uk](https://www.brownandmerry.co.uk)
see all our properties on [zoopla.co.uk](https://www.zoopla.co.uk) | [rightmove.co.uk](https://www.rightmove.co.uk) | [sequencehome.co.uk](https://www.sequencehome.co.uk)



Property Reference:
BKH102642- 0004

1. MONEY LAUNDERING REGULATIONS Intending purchasers will be asked to produce identification documentation at a later stage and we would ask for your co-operation in order that there is no delay in agreeing the sale. 2. These particulars do not constitute part or all of an offer or contract. 3. The measurements indicated are supplied for guidance only and as such must be considered incorrect. Potential buyers are advised to recheck measurements before committing to any expense. 4. We have not tested any apparatus, equipment, fixtures or services and it is in the buyers interest to check the working condition of any appliances. 5. Where an EPC, or a Home Report (Scotland only) is held for this property, it is available for inspection at the branch by appointment. If you require a printed version of a Home Report, you will need to pay a reasonable production charge reflecting printing and other costs. 6. We are not able to offer an opinion either written or verbal on the content of these reports and this must be obtained from your legal representative. 7. Whilst we take care in preparing these reports, a buyer should ensure that his/her legal representative confirms as soon as possible all matters relating to title including the extent and boundaries of the property and other important matters before exchange of contracts.



01442 870444



berkhamsted@brownandmerry.co.uk



124 High Street, BERKHAMSTED,
Hertfordshire, HP4 3AT



[brownandmerry.co.uk](https://www.brownandmerry.co.uk)