



**Montgomerie Close, Berkhamsted HP4 1JX**





This beautifully extended three-bedroom family home is presented in excellent decorative order and offers stylish, spacious accommodation perfect for modern living. The property boasts an abundance of natural light, with an impressive open-plan living area that seamlessly combines a sleek contemporary kitchen, complete with integrated appliances and a breakfast bar with a generous dining and lounge space. Large, characterful doors open onto the rear garden, capturing stunning views and providing effortless indoor-outdoor flow. The ground floor also features a versatile additional reception room, ideal as a playroom, guest bedroom, or home office, with convenient access to a downstairs W.C. Upstairs, you will find three bright and spacious bedrooms, all beautifully presented and well maintained. The luxurious family bathroom is a real highlight, offering a fantastic four-piece suite with a freestanding bath and separate walk-in shower. A staircase from the landing leads to a lovely, light-filled office space, perfect for home working or a quiet retreat. Externally, the property enjoys a charming rear garden with a spacious patio area, and fantastic built-in storage solutions. To the front, there is driveway parking for two vehicles along with a fitted EV charging point, making this an ideal home for a modern family lifestyle. Early viewing is highly recommended to fully appreciate the quality and space on offer.







## welcome to Montgomerie Close, Berkhamsted

- Extended
- Three Bedrooms
- Fantastic Condition Throughout
- Open Plan Living/dining
- Versatile Play room/Guest room

Tenure: Freehold EPC Rating: Awaited  
Council Tax Band: D

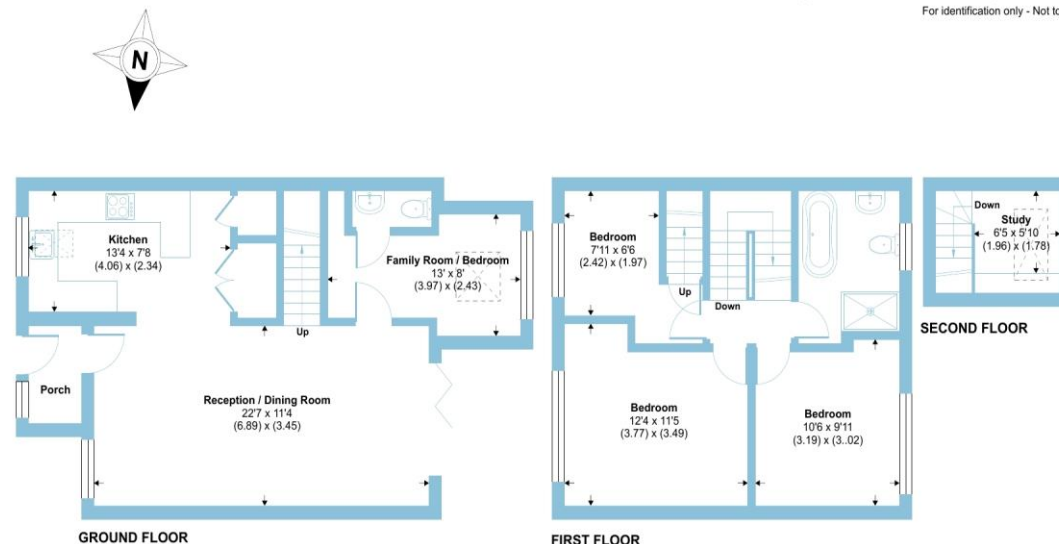
# £600,000

Beautifully extended three bedroom family home offering a stylish open plan living, versatile layout, stunning gardens views and driveway parking positioned in a quiet cul de sac location in Berkhamsted.

### Montgomerie Close, Berkhamsted, HP4

Approximate Area = 1061 sq ft / 98.6 sq m

For identification only - Not to scale



Floor plan produced in accordance with RICS Property Measurement 2nd Edition, Incorporating International Property Measurement Standards (IPMS2 Residential). © nichcom 2025. Produced for Brown & Merry. REF: 1286198

brown & merry

**check out more properties at** [browbandmerry.co.uk](https://www.browbandmerry.co.uk)  
**see all our properties on** [zoopla.co.uk](https://www.zoopla.co.uk) | [rightmove.co.uk](https://www.rightmove.co.uk) | [sequencehome.co.uk](https://www.sequencehome.co.uk)



Property Reference:  
BKH103093 - 0003

1. MONEY LAUNDERING REGULATIONS Intending purchasers will be asked to produce identification documentation at a later stage and we would ask for your co-operation in order that there is no delay in agreeing the sale. 2. These particulars do not constitute part or all of an offer or contract. 3. The measurements indicated are supplied for guidance only and as such must be considered incorrect. Potential buyers are advised to recheck measurements before committing to any expense. 4. We have not tested any apparatus, equipment, fixtures or services and it is in the buyers interest to check the working condition of any appliances. 5. Where an EPC, or a Home Report (Scotland only) is held for this property, it is available for inspection at the branch by appointment. If you require a printed version of a Home Report, you will need to pay a reasonable production charge reflecting printing and other costs. 6. We are not able to offer an opinion either written or verbal on the content of these reports and this must be obtained from your legal representative. 7. Whilst we take care in preparing these reports, a buyer should ensure that his/her legal representative confirms as soon as possible all matters relating to title including the extent and boundaries of the property and other important matters before exchange of contracts.



**01442 870444**



[berkhamsted@browbandmerry.co.uk](mailto:berkhamsted@browbandmerry.co.uk)



124 High Street, BERKHAMSTED,  
Hertfordshire, HP4 3AT



**[browbandmerry.co.uk](https://www.browbandmerry.co.uk)**