



Emperor Close, BERKHAMSTED HP4 1TD



This beautifully presented family home offers a spacious and bright accommodation throughout, the downstairs accommodation comprises of two reception rooms, kitchen and WC. The two reception rooms are interlinked via French doors and provide a great accommodation for entertaining friends and family, the dining room enjoys views of the stunning and colourful rear garden with opening both to the kitchen and rear garden. The kitchen is fitted with a range of wall and base units with space for free standing appliances. On the first floor, there are three bedrooms and family bathroom. The principal room benefits from fitted wardrobes and an en-suite shower room, bedroom two also benefits from fitted wardrobes and enjoys stunning view across Berkhamsted.

Of particular note is the rear garden which has been truly a labour of love, the stunning green lawn is surrounded by a ray of colourful plants and hedging. The patio area is directly adjacent to the rear of the property and covered by grape vine across a pergola, this area provides a perfect space to entertain friends and family or simply relax after a busy day. The low maintenance front garden is laid with slate chippings with a number of mature plants. The driveway provides parking for several vehicles and leads to the garage.



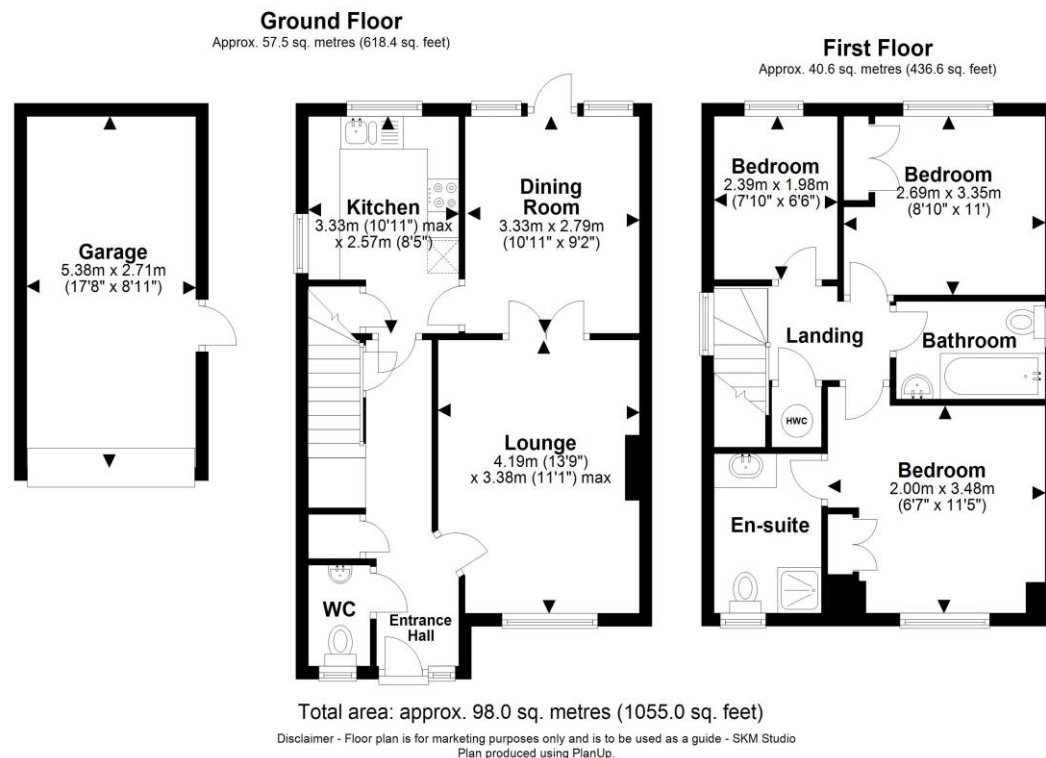


welcome to Emperor Close, Berkhamsted

- DETACHED
- THREE BEDROOMS
- TWO RECEPTION ROOMS
- KITCHEN
- TWO BATHROOMS
- DRIVEWAY
- CUL-DE-SAC LOCATION
- IMMACULATELY PRESENTED

Tenure: Freehold EPC Rating: C

A very well presented three-bedroom detached family home situated in a quiet cul-de-sac and within walking distance of the High Street and all amenities.



Offers over
£700,000

check out more properties at brownandmerry.co.uk
see all our properties on zoopla.co.uk | rightmove.co.uk | sequencehome.co.uk



Property Reference:
BKH102863 - 0003

1. MONEY LAUNDERING REGULATIONS Intending purchasers will be asked to produce identification documentation at a later stage and we would ask for your co-operation in order that there is no delay in agreeing the sale. 2. These particulars do not constitute part or all of an offer or contract. 3. The measurements indicated are supplied for guidance only and as such must be considered incorrect. Potential buyers are advised to recheck measurements before committing to any expense. 4. We have not tested any apparatus, equipment, fixtures or services and it is in the buyers interest to check the working condition of any appliances. 5. Where an EPC, or a Home Report (Scotland only) is held for this property, it is available for inspection at the branch by appointment. If you require a printed version of a Home Report, you will need to pay a reasonable production charge reflecting printing and other costs. 6. We are not able to offer an opinion either written or verbal on the content of these reports and this must be obtained from your legal representative. 7. Whilst we take care in preparing these reports, a buyer should ensure that his/her legal representative confirms as soon as possible all matters relating to title including the extent and boundaries of the property and other important matters before exchange of contracts.



01442 870444



berkhamsted@brownandmerry.co.uk



124 High Street, BERKHAMSTED,
Hertfordshire, HP4 3AT



brownandmerry.co.uk