



The Green, Potten End Berkhamsted HP4 2QH



The sense of space and quality is immediately felt upon entering into this stunning property with beautiful underfloor heated tiled flooring leading through into a bay fronted living room. The property boasts over 2100Sqft of accommodation and the main hub of the home is located straight ahead where you will find the spectacular open plan kitchen/ dining/ family room. This is an impressive space and perfect for modern day family living with built in shelving and units. The luxury kitchen offers ample storage with integrated appliances, quartz work tops and an Island. The separate family room is a great size and offers flexibility to be used as a playroom or office. The back of the house enjoys views out to the large family gardens accessed via patio doors. There is a utility room with side access to the garden and front. The integral garage and cloak room/ W/C complete the ground floor accommodation. The first floor has four double bedroom, two bedrooms benefit from en-suites whilst the other two are served by the main family bathroom which is fully tiled with a beautifully fitted high end curved shower bath and electric toothbrush charger point. Externally the large westerly rear facing rear garden offers a great space for families to enjoy and entertain. The patio raises up to the large flat lawn. Finally, to the front of the property you will find a generous driveway provides parking for several vehicles.





welcome to

The Green, Potten End Berkhamsted

- Recently extended and full renovated
- Luxury home
- Three reception rooms
- High finish bespoke kitchen and island
- Utility room

Tenure: Freehold EPC Rating: C

guide price

£1,600,000

Desirably positioned in the centre of Potten End village a stunning 4/5 bedroom property that has recently undergone major extensions and full renovation throughout the entire property all completed to an outstanding level of specification, quality and benefits from a large beautiful rear garden.

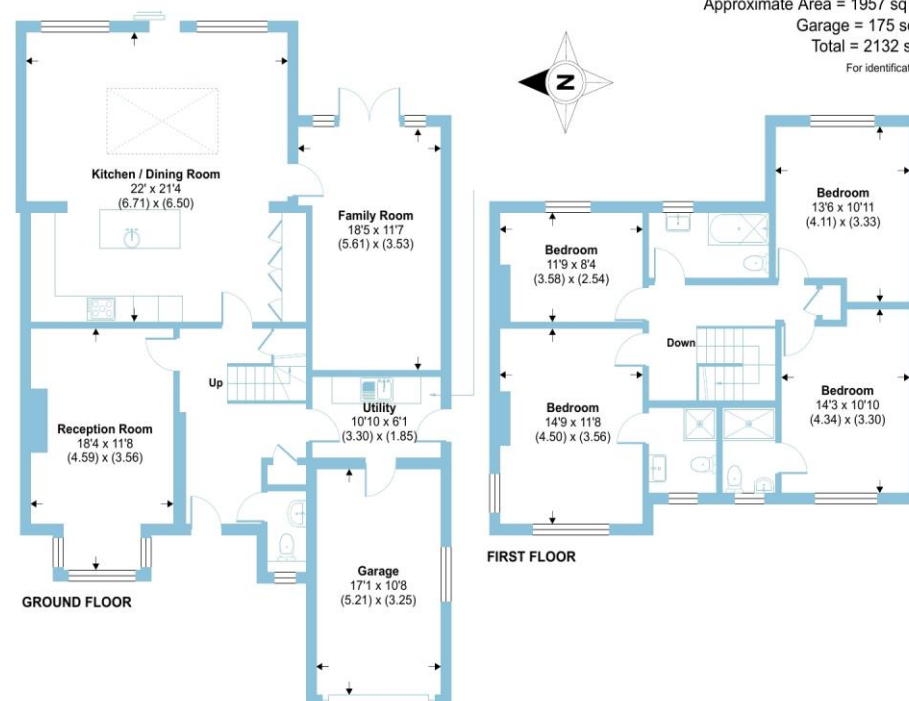
The Green, Potten End, Berkhamsted, HP4

Approximate Area = 1957 sq ft / 181.8 sq m

Garage = 175 sq ft / 16.2 sq m

Total = 2132 sq ft / 198 sq m

For identification only - Not to scale



Floor plan produced in accordance with RICS Property Measurement Standards incorporating International Property Measurement Standards (IPMS2 Residential). © richcom 2024. Produced for Brown & Merry. REF: 1154316



check out more properties at [browndmerry.co.uk](https://www.browndmerry.co.uk)

see all our properties on [zoopla.co.uk](https://www.zoopla.co.uk) | [rightmove.co.uk](https://www.rightmove.co.uk) | [sequencehome.co.uk](https://www.sequencehome.co.uk)



Property Reference:
BKH102807- 0003

1. MONEY LAUNDERING REGULATIONS Intending purchasers will be asked to produce identification documentation at a later stage and we would ask for your co-operation in order that there is no delay in agreeing the sale. 2. These particulars do not constitute part or all of an offer or contract. 3. The measurements indicated are supplied for guidance only and as such must be considered incorrect. Potential buyers are advised to recheck measurements before committing to any expense. 4. We have not tested any apparatus, equipment, fixtures or services and it is in the buyers interest to check the working condition of any appliances. 5. Where an EPC, or a Home Report (Scotland only) is held for this property, it is available for inspection at the branch by appointment. If you require a printed version of a Home Report, you will need to pay a reasonable production charge reflecting printing and other costs. 6. We are not able to offer an opinion either written or verbal on the content of these reports and this must be obtained from your legal representative. 7. Whilst we take care in preparing these reports, a buyer should ensure that his/her legal representative confirms as soon as possible all matters relating to title including the extent and boundaries of the property and other important matters before exchange of contracts.



01442 870444



berkhamsted@browndmerry.co.uk



124 High Street, BERKHAMSTED,
Hertfordshire, HP4 3AT



[browndmerry.co.uk](https://www.browndmerry.co.uk)