



The Vale, Hawridge Chesham HP5 3NY

welcome to

The Vale, Hawridge Chesham

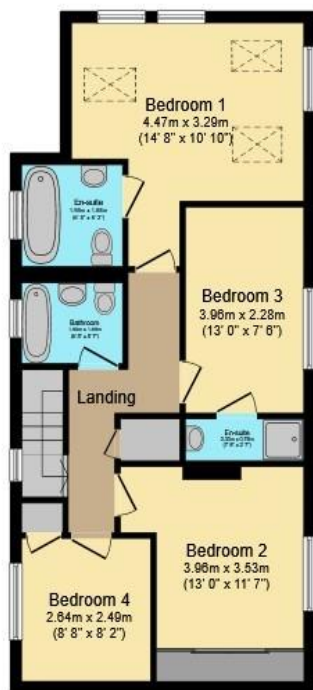
Brown & Merry are pleased to bring to the market this extended four bedroom semi-detached family home in The Vale. With stunning countryside in all directions the property offers a great location for family walks.





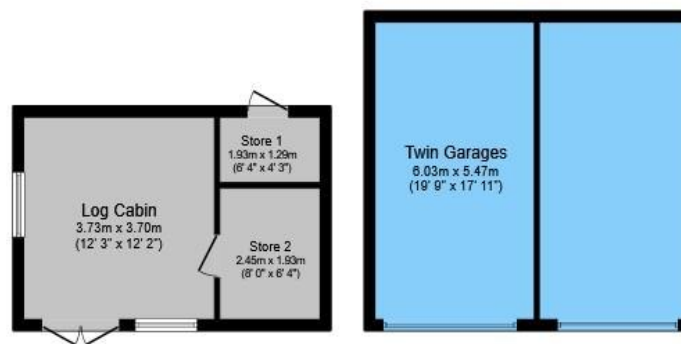
Ground Floor

Floor area 65.9 m² (709 sq.ft.)



First Floor

Floor area 63.4 m² (682 sq.ft.)



Outbuilding

Floor area 40.6 m² (437 sq.ft.)

TOTAL: 169.8 m² (1,828 sq.ft.)

This floor plan is for illustrative purposes only. It is not drawn to scale. Any measurements, floor areas (including any total floor area), openings and orientations are approximate. No details are guaranteed, they cannot be relied upon for any purpose and do not form any part of any agreement. No liability is taken for any error, omission or misstatement. A party must rely upon its own inspection(s). Powered by www.Propertybox.io

Powered by Focal

Porch & Hallway

Lounge

17' 10" max x 13' max (5.44m max x 3.96m max)

Kitchen/Diner

26' 9" max x 11' 4" max (8.15m max x 3.45m max)

Utility Room

6' 6" x 5' 11" (1.98m x 1.80m)

W C

Landing

Bedroom 1

14' 8" max x 10' 10" max (4.47m max x 3.30m max)

En-Suite

6' 5" x 6' 2" (1.96m x 1.88m)

Bedroom 2

13' max x 11' 7" max (3.96m max x 3.53m max)

Bedroom 3

13' max x 7' 6" max (3.96m max x 2.29m max)

En-Suite

7' 8" x 2' 7" (2.34m x 0.79m)

Bedroom 4

8' 8" max x 8' 2" max (2.64m max x 2.49m max)

welcome to

The Vale, Hawridge Chesham

- EXTENDED SEMI-DETACHED
- SPACIOUS KITCHEN/DINER
- LOUNGE WITH LOG BURNER
- FOUR GOOD SIZED BEDROOMS
- 2 X EN-SUITES

Tenure: Freehold EPC Rating: D

offers in excess of

£800,000



Please note the marker reflects the postcode not the actual property

view this property online [brownandmerry.co.uk/Property/CSM103306](https://www.brownandmerry.co.uk/Property/CSM103306)



Property Ref:
CSM103306 - 0005

1. MONEY LAUNDERING REGULATIONS Intending purchasers will be asked to produce identification documentation at a later stage and we would ask for your co-operation in order that there is no delay in agreeing the sale. 2. These particulars do not constitute part or all of an offer or contract. 3. The measurements indicated are supplied for guidance only and as such must be considered incorrect. Potential buyers are advised to recheck measurements before committing to any expense. 4. We have not tested any apparatus, equipment, fixtures or services and it is in the buyers interest to check the working condition of any appliances. 5. Where an EPC, or a Home Report (Scotland only) is held for this property, it is available for inspection at the branch by appointment. If you require a printed version of a Home Report, you will need to pay a reasonable production charge reflecting printing and other costs. 6. We are not able to offer an opinion either written or verbal on the content of these reports and this must be obtained from your legal representative. 7. Whilst we take care in preparing these reports, a buyer should ensure that his/her legal representative confirms as soon as possible all matters relating to title including the extent and boundaries of the property and other important matters before exchange of contracts.

Brown & Merry is a trading name of Sequence (UK) Limited which is registered in England and Wales under company number 4268443, Registered Office is Cumbria House, 16-20 Hockliffe Street, Leighton Buzzard, Bedfordshire, LU7 1GN. VAT Registration Number is 500 2481 05.



brown & merry



01494 775650



chesham@brownandmerry.co.uk



3 Market Square, CHESHAM, Buckinghamshire,
HP5 1HG



[brownandmerry.co.uk](https://www.brownandmerry.co.uk)