



Townsccliffe Lane, Marple Bridge

 JARDINE
ESTATES



Townsccliffe Lane

Marple Bridge, Stockport

Tucked away on a private road, this beautifully presented home offers a fabulous open-plan living space where all the family can gather, relax, and make memories.

As you enter, you are greeted by a welcoming hallway with original windows that exude character and charm.

A handy cloak room is the perfect spot for the children's coats and shoes before you enter the open plan living space.





Townsccliffe Lane

Marple Bridge, Stockport

The heart of the home lies in the spacious kitchen, dining and living area, perfect for entertaining or simply unwinding after a long day.

The sitting area has a stunning log burner for cosy evenings and space for two large sofas.

The German kitchen is modern and functional with integrated dishwasher lots of storage.

There is a large island unit with oak top so all of your guests can sit and chat while you cook up a storm .

A dining table for up to eight people overlooks the stunning garden.



When the weather is warm open the sliding doors and the inside seamlessly merges with the patio area.





Townsccliffe Lane

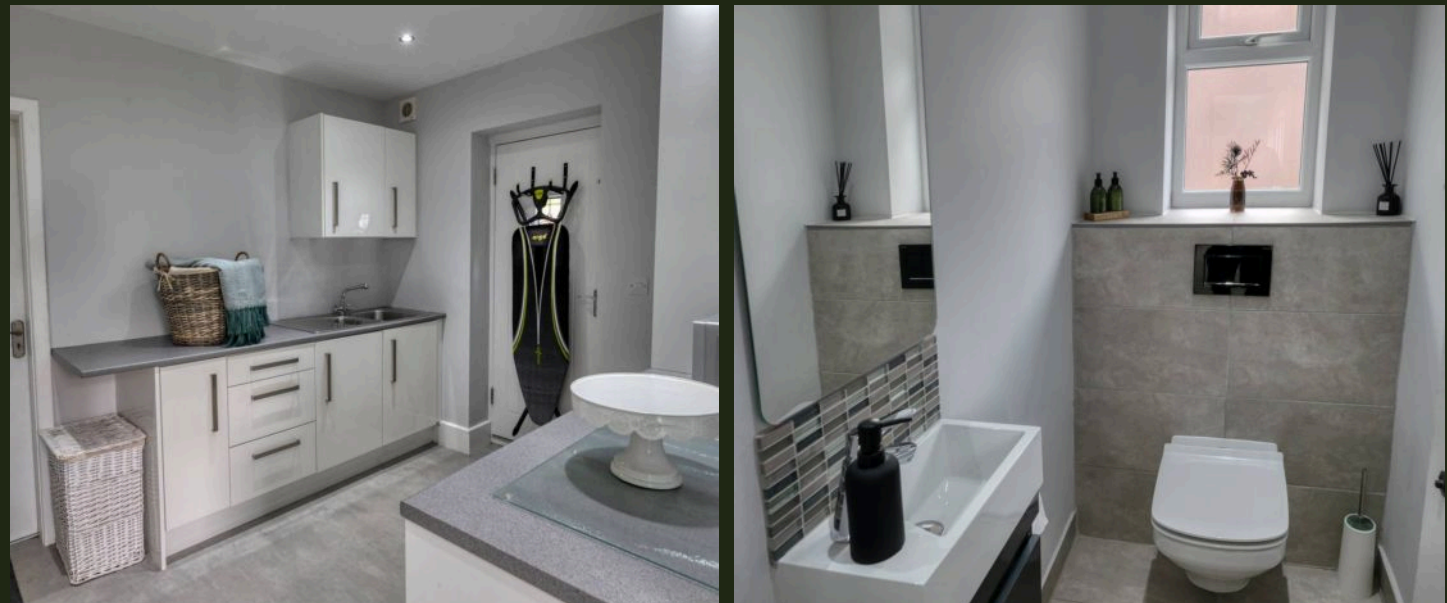
Marple Bridge, Stockport

A playroom is attached to the open plan living space meaning you can close the door at day .

It would also make a lovely home office with sweeping views over the garden.

The large utility room provides extra storage space, making household tasks a breeze plus a downstairs wc .

You have access to the integrated garage with a remote roll top door .





Townsccliffe Lane

Marple Bridge, Stockport

Upstairs now where you will find five double bedrooms, two with ensuite bathrooms, ensuring everyone has their own space to retreat to.

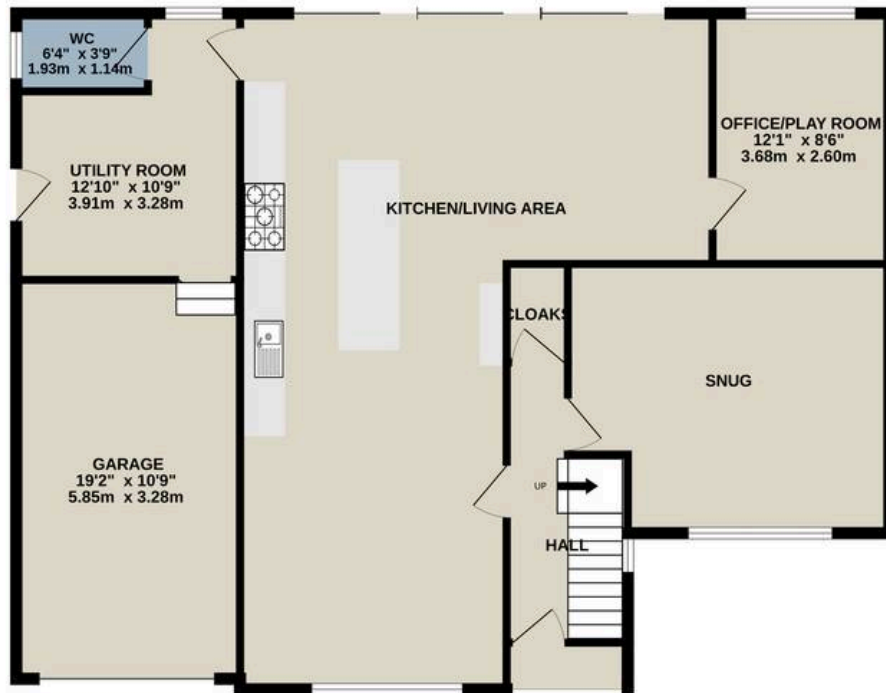
The stunning Principal Suite with dressing room and ensuite, offers a private sanctuary for relaxation. Wake up each morning with a relaxing cup of tea and views over the back garden before entering your luxurious ensuite .

The family bathroom is a retreat in itself, with a separate shower and a luxurious bath tub to soak away the stresses of the day. With four further double bedrooms, all with space for wardrobes, there is no need for arguments !





GROUND FLOOR
1268 sq.ft. (117.8 sq.m.) approx.



1ST FLOOR
1276 sq.ft. (118.6 sq.m.) approx.



TOTAL FLOOR AREA : 2544 sq.ft. (236.4 sq.m.) approx.

Whilst every attempt has been made to ensure the accuracy of the floorplan contained here, measurements of doors, windows, rooms and any other items are approximate and no responsibility is taken for any error, omission or mis-statement. This plan is for illustrative purposes only and should be used as such by any prospective purchaser. The services, systems and appliances shown have not been tested and no guarantee as to their operability or efficiency can be given.

Made with Metropix ©2025



Townsccliffe Lane

Marple Bridge, Stockport

Council Tax band: F

Tenure: Freehold

EPC Energy Efficiency Rating: D

EPC Environmental Impact Rating: D

- Luxury residence in the heart of Marple Bridge
- Beautifully presented
- Fabulous open plan living space for all of the family to gather
- Situated on a private road
- Driveway for several vehicles plus garage
- Private garden and patios
- Stunning Principal Suite with dressing room and en suite
- Five double bedrooms two with en suite





Jardine Estates

287 Stockport Road, Gee Cross, Hyde - SK14 5RF

0161 871 7071 • team@jardineestates.co.uk • jardineestates.co.uk



JARDINE
ESTATES