



Kennett Drive

- Bredbury -

Are you looking for a home with space for everyone and within walking distance of the local train station? This could be the one!

KEY POINTS

- Three story town house
- Four bedrooms
- Three bathrooms
- Conservatory
- Garage & off-road parking
- Close To Bredbury station
- 25 Minutes from Manchester City Centre & Airport
- Walks and cycling on your doorstep
- NO CHAIN



TOTAL FLOOR AREA: 1,265 sq ft (117.5 sq m) approx.

While every attempt has been made to ensure the accuracy of the floorplan contained herein, measurements of plans, sections, views and any other details are approximate and no responsibility is taken for any error or omission in the statement. This plan is for illustrative purposes only and should not be used as a guide to any prospective purchaser. The services, systems and appliances shown have not been tested and no guarantee is given for their operation or efficiency can be given. Made with Metaphor 12/25



0161 871 7071
team@jardineestates.co.uk

Welcome to Kennett Drive, a small development of town houses on a popular estate with everything you would need to give you an amazing home.

On entrance you can kick off your shoes in the welcoming hallway, where you will find the entrance to the handy ground floor wc.

Turn left where your fabulous kitchen/dining room is situated, enjoy a peaceful cup of tea in the mornings. The kitchen is light and bright with integrated appliances including dishwasher. There is space for a table to seat 4/6 so you can supervise homework and enjoy a Sunday lunch around the table.

At the end of the hallway is your relaxing living room where you can snuggle up and enjoy a cosy night in watching a film. In the warmer months you have patio doors which lead into a large conservatory and out onto the garden. You can catch the sun most of the day, invite family and friends over to enjoy drinks and a BBQ.

The first floor is where you will find your sleeping quarters, two double bedrooms, one to the front and one to the rear, plus a single bedroom currently used as a home office.

Your family bathroom is fully tiled with a white suite and a shower over the bath - perfect for waking you up in the morning.

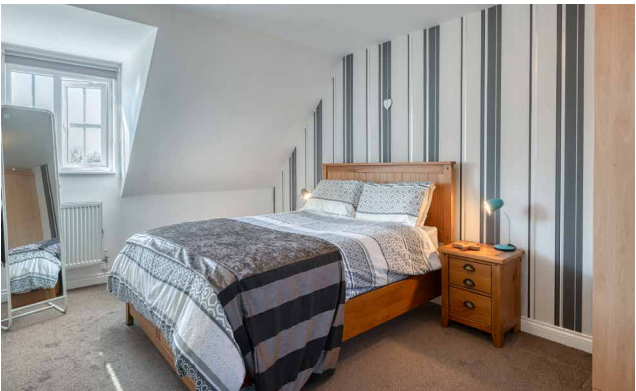
The second floor is where you will find your tranquil principal suite. The bedroom has ample space for a king-sized bed and plenty of fitted storage. Your ensuite has a fabulous shower for busy mornings. With a feeling of total tranquillity, you will struggle to leave this sanctuary!

Outside there is parking for two cars and a garage with a small garden setting the house back from the road.

Where it is

Kennett Drive sits within easy reach of Etherow Park and Werneth Low, you can be blowing away the cobwebs within minutes from home, there are endless routes to take with the dog, or take the children for a game of tennis around the corner on the all-weather pitch.

If the bright lights of Manchester are more your thing, walk to Bredbury train station and you can begin your shopping in under 30 minutes. If you prefer the car the M60/M67 are a few minutes driveway, as are many supermarkets for the weekly shop. For those last-minute items, you can stroll to the local shops and find a greengrocer, butchers and an award-winning fish and chip shop.



Energy Efficiency Rating		
Very energy efficient - lower running costs	Current	Potential
A		
B		
C		
D		
E		
F		
G		
Not energy efficient - higher running costs		
England & Wales		
EU Directive 2002/91/EC		

TECHNICAL DETAILS

- Freehold
- Council tax band: D
- Council: Stockport
- Double glazed
- Boiler Type: Gas Combination
- Boiler location: Kitchen
- Garage plus driveway for up to two vehicles
- Bredbury train station on your doorstep
- NO CHAIN

Enjoyed Your
Viewing Experience
With Us?

We would love it if you
could take 2 minutes
to leave us a Google
review. It really helps a
small business like us.



SCAN ME