

The Highway, Brighton, BN2 4GB

Approximate Gross Internal Area = 102.0 sq m / 1093 sq ft

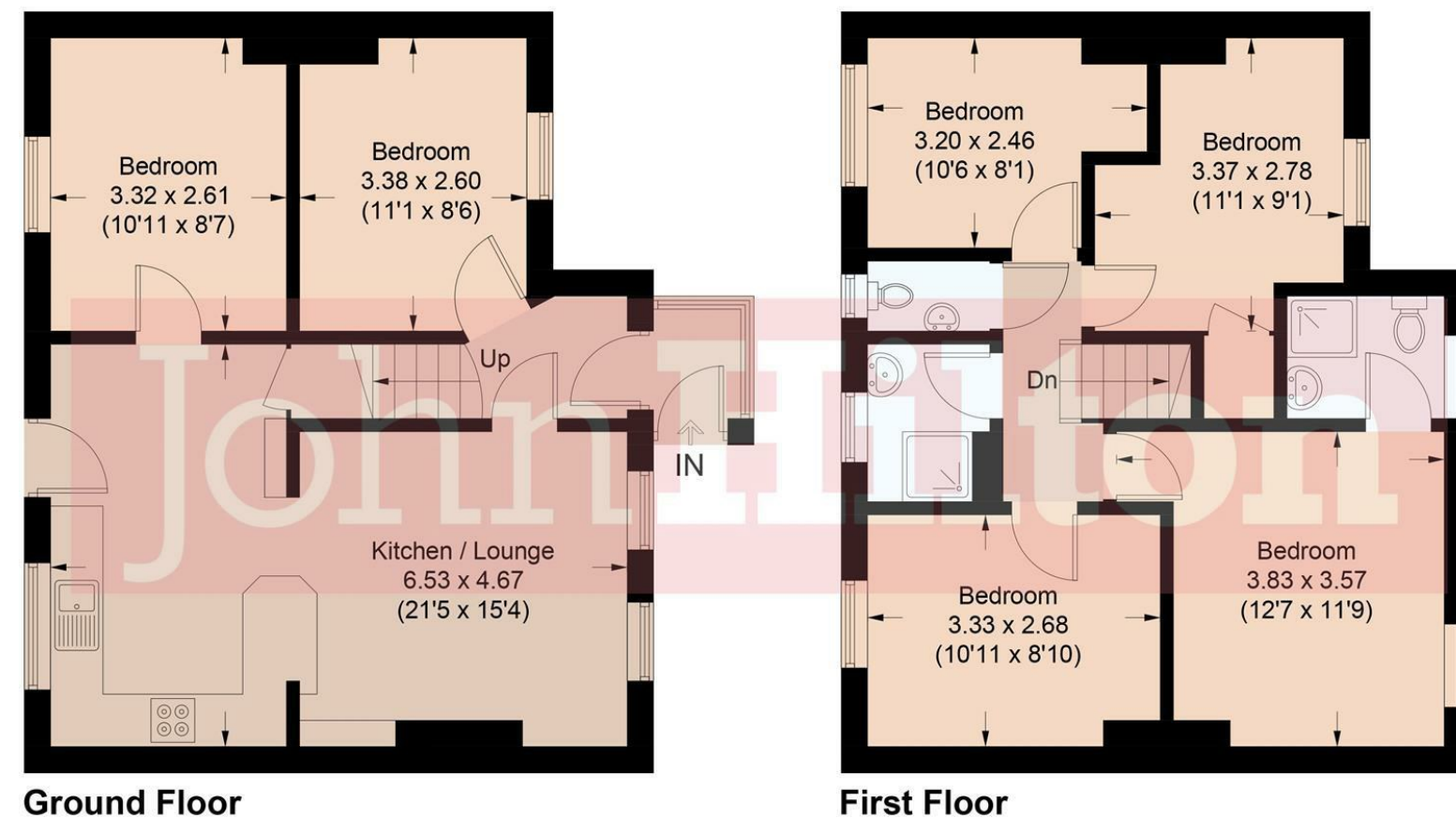


Illustration for identification purposes only, measurements are approximate, not to scale.
Imageplansurveys @ 2024



Total Area Approx 1093.00 sq ft

22 The Highway, Brighton, BN2 4GB

To view, contact John Hilton:
52 High Street, Rottingdean, BN2 7HF
132-135 Lewes Road, Brighton, BN2 3LG
01273 608151 or sales@johnhiltons.co.uk

£490,000 Freehold



*** INVESTMENT OPPORTUNITY *** A substantial six bedroom semi-detached house with HMO license and tenants in situ until 11/08/2026, producing £3,910.71 pcm (£46,928.52 per annum). Great location for students, situated directly opposite Brighton University and set back from the Lewes Road, with frequent buses into the city centre and also to the Falmer Campus. Generously sized accommodation which consists of six bedrooms, open-plan kitchen/dining/living space, two shower rooms plus separate WC and a well-maintained rear garden. No onward chain.

- Great Investment Opportunity
- Licenced HMO
- Sold with Tenants In Situ Until August 2026
- Producing £3,910.71 pcm (£46,928.52 per annum)
- Six Bedrooms
- Two Shower Rooms
- Sought-After Location for Students
- Directly Opposite Brighton University
- Frequent Buses to City Centre & Sussex University
- NO ONWARD CHAIN

Energy Efficiency Rating		
	Current	Potential
Very energy efficient - lower running costs		
(92 plus) A		
(81-91) B		
(69-80) C		
(55-68) D		
(39-54) E		
(21-38) F		
(1-20) G		
Not energy efficient - higher running costs		
England & Wales	EU Directive 2002/91/EC	

Council Tax Band: C

22 The Highway Brighton, BN2 4GB

Approach

Lawned front garden with mature shrubs and walled boundary, footpath leading to front entrance.

Porch

Entrance Hall

Stairs to first floor, wood laminate floor.

Open-Plan Kitchen/Lounge:

6.53m x 4.67m (21'5" x 15'3")

Lounge Area

Wood laminate flooring, windows to front.

Kitchen Area

Tiled floor, fitted kitchen with beech laminate units at eye and base level, worktops with tiled splashback extend to a breakfast bar. Fitted oven, gas hob with extractor hood over, stainless steel sink with mixer tap and drainer, spaces for appliances, cupboard housing combi boiler, door to rear garden.

Bedroom

3.38m x 2.60m (11'1" x 8'6")

Window to front.

Bedroom

3.32m x 2.61m (10'10" x 8'6")

Window to rear.

First Floor Landing

Bedroom

3.83m x 3.57m (12'6" x 11'8")

Window to front.

En-Suite Shower

Corner shower enclosure with aqua panel splashbacks, mains shower with hand-held shower attachment on riser, wash hand basin, low-level WC, heated towel rail.

Bedroom

3.33m x 2.68m (10'11" x 8'9")

Window to rear.

Bedroom

3.37m x 2.78m (11'0" x 9'1")

Window to front, built in storage

Bedroom

3.20m x 2.46m (10'5" x 8'0")

Window to rear

Shower Room

Shower enclosure with tiled surround, electric shower with hand-held shower attachment on riser, wash hand basin with mixer tap and cupboard below.

Separate WC

Low-level WC, wash hand basin.

Rear Garden

Paved patio with steps ascending to main garden, mostly lawned with small rockery area, pond, various mature shrubs and gated sided access.

