



Acre Lane, Bromborough

£210,000



LESLEY HOOKS
ESTATE AGENTS





This three-bedroom semi-detached home offers a wonderful opportunity for buyers looking to put their own stamp on a property. In need of some updating, it's brimming with potential and perfectly suited to first-time buyers or downsizers alike. The accommodation comprises a welcoming entrance porch, a comfortable lounge, and a kitchen/diner with a little bit of love will make a great space for everyday living and entertaining. Upstairs are three well-proportioned bedrooms and a family bathroom. Outside, the garden enjoys an open aspect to the rear, creating a lovely sense of space, while a garage and driveway provide practical off-road parking. Ideally located next to Bromborough village, this is a home with great bones, a great setting, and plenty of scope to make it your own.



Porch

5'4" (1.63m) x 3'10" (1.17m)

Lounge

15'8" (4.78m) x 15'1" (4.6m)

Kitchen/Breakfast Bar

14'4" (4.37m) x 9'3" (2.82m)

Utility

7'4" (2.24m) x 6'2" (1.88m)

Bedroom One

13'0" (3.96m) x 10'8" (3.25m)

Bedroom Two

10'3" (3.12m) x 8'5" (2.57m)

Bedroom Three

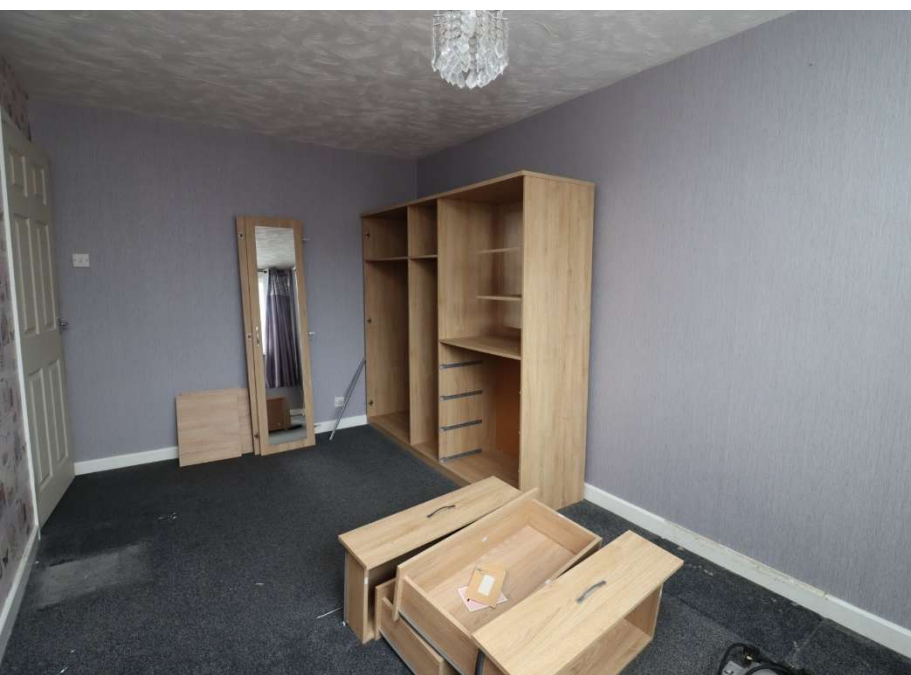
8'7" (2.62m) x 5'10" (1.78m)

Bathroom

6'2" (1.88m) x 5'8" (1.73m)

Garage

19'3" (5.87m) x 7'10" (2.39m)



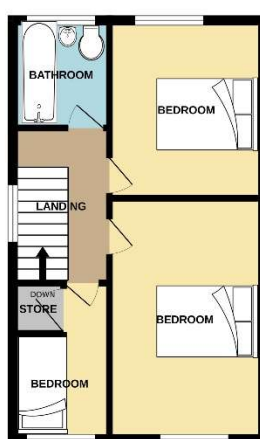




GROUND FLOOR
551 sq. ft. (51.2 sq.m.) approx.



1ST FLOOR
353 sq. ft. (32.8 sq.m.) approx.



TOTAL FLOOR AREA - 904 sq. ft. (84.0 sq.m.) approx.

Whilst every attempt has been made to ensure the accuracy of the floorplan contained herein, measurements of doors, windows, floors and any other items are approximate and no responsibility is taken for any error, omission or mis-statement. This plan is for illustrative purposes only and should be used as such by any prospective purchaser. The services, systems and appliances shown have not been tested and no guarantee as to their operability or efficiency can be given.
Made with Ideagen ©2020

contact Us:

151 334 5875

sley@lesleyhooks.co.uk

3 Allport Lane, Bromborough,
Wirral, Merseyside, CH62 7HH

Disclaimer: Whilst these details are thought to be correct, their accuracy cannot be guaranteed and do not form part of any contract. It should be noted that we have not tested any fixtures, fittings, equipment, apparatus or services, therefore we cannot verify that they are in working order of fit for purpose. Solicitors should be used to confirm that any moveable items described within these details are in fact part of the sale agreement. While we try to ensure measurements are correct they are not guaranteed and purchasers are advised to take their own measurements before ordering any fixtures and fittings. Please note: if you are buying a leasehold property, please ensure that all details and conditions of the lease are checked with your solicitor prior to you incurring any costs as additional fees could be incurred for items such as leasehold packs.