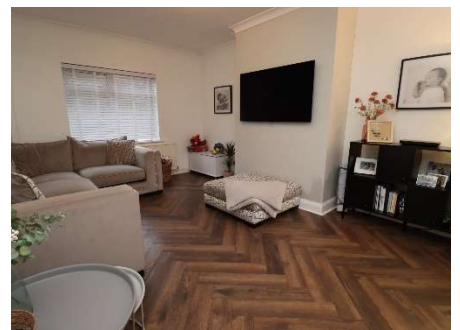




# Valley Road, Bromborough

£179,995



**LESLEY HOOKS**  
ESTATE AGENTS





This immaculate two-bedroom mid-terrace home is a modern gem, offering stylish living spaces throughout. Upon entering, you're greeted by a welcoming entrance hall that leads into a bright and airy lounge, perfect for relaxation or entertaining guests. The contemporary kitchen/diner at the rear boasts sleek fittings and ample space for family meals, with easy access to the garden for seamless indoor-outdoor living.

Upstairs, you'll find two generously sized bedrooms, both filled with natural light, providing comfort and versatility. The modern family bathroom is complemented by a separate WC for added convenience.

Externally, the property benefits from a private rear garden, ideal for outdoor enjoyment and relaxation. The front of the home offers a driveway, providing off-street parking. With its modern décor and pristine condition, this property is ready to move in and enjoy.

**Hall**

3'9" (1.14m) x 3'7" (1.09m)

**Lounge**

16'3" (4.95m) x 12'2" (3.71m)

**Kitchen**

16'2" (4.93m) x 7'0" (2.13m)

**Bedroom One**

13'3" (4.04m) Max x 12'8" (3.86m)

**Bedroom Two**

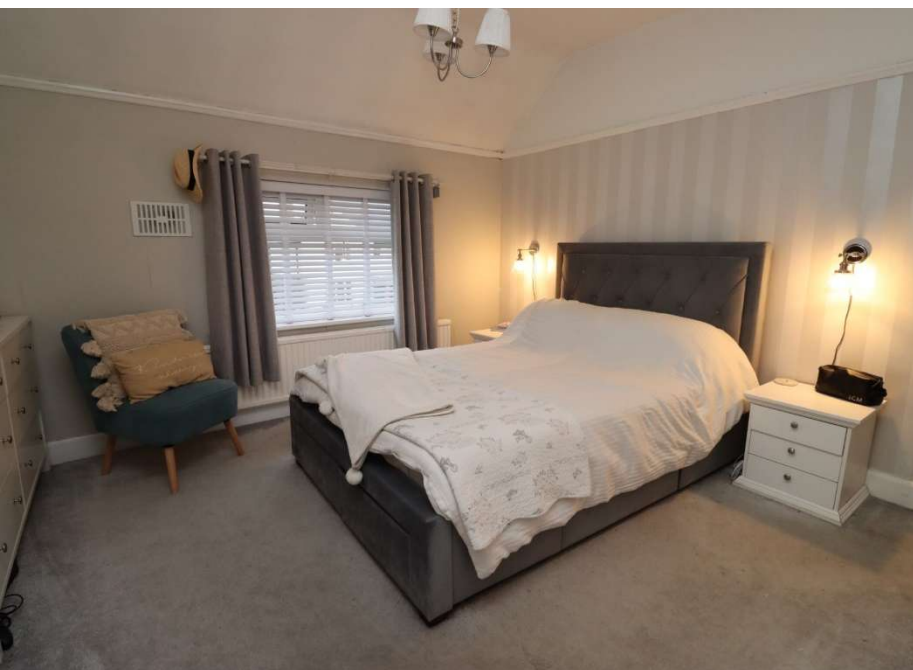
9'11" (3.02m) x 11'11" (3.63m) Max

**Bathroom**

6'0" (1.83m) x 4'6" (1.37m)

**WC**

9'2" (2.79m) x 2'11" (0.89m)

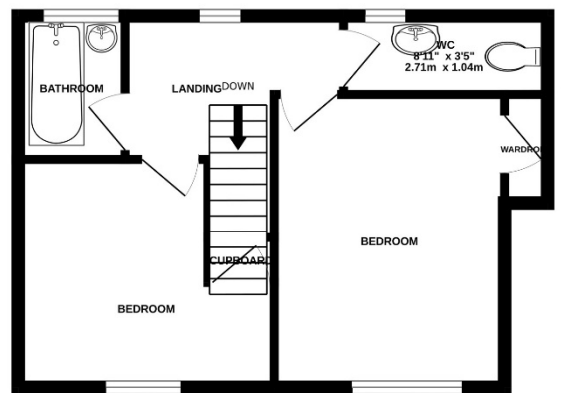
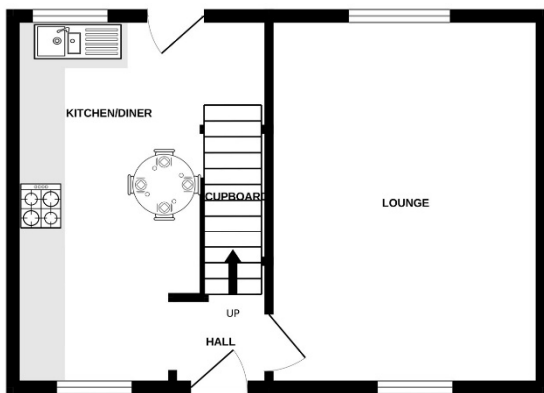






GROUND FLOOR

1ST FLOOR



Whilst every attempt has been made to ensure the accuracy of the floorplan contained here, measurements of doors, windows, rooms and any other items are approximate and no responsibility is taken for any error, omission or mis-statement. This plan is for illustrative purposes only and should be used as such by any prospective purchaser. The services, systems and appliances shown have not been tested and no guarantee as to their operability or efficiency can be given.  
Made with Metropix ©2024

Disclaimer: Whilst these details are thought to be correct, their accuracy cannot be guaranteed and do not form part of any contract. It should be noted that we have not tested any fixtures, fittings, equipment, apparatus or services, therefore we cannot verify that they are in working order of fit for purpose. Solicitors should be used to confirm that any moveable items described within these details are in fact part of the sale agreement. While we try to ensure measurements are correct they are not guaranteed and purchasers are advised to take their own measurements before ordering any fixtures and fittings. Please note: if you are buying a leasehold property, please ensure that all details and conditions of the lease are checked with your solicitor prior to you incurring any costs as additional fees could be incurred for items such as leasehold packs.