



Hillary Road, Eastham

£215,000



LESLEY HOOKS
ESTATE AGENTS





This charming three-bedroom semi-detached home has been lovingly cared for over the years and is now ready to welcome a new family to create their own cherished memories. Nestled on a peaceful street, this house boasts warmth and character from the moment you step through the front door.

As you enter the hallway, you'll feel the history of a home that has provided comfort and joy. The inviting lounge has double doors that open onto the separate dining space, making it perfect for family gatherings or cozy evenings in. Large patio doors allow natural light to fill the room, creating a bright and airy atmosphere that you'll love coming home to.

The kitchen, with practicality in mind, offers ample storage and workspace, ready for preparing everything from quick breakfasts to family dinners. Just off the kitchen, the garage provides additional storage or the potential for future conversion, should you wish to expand your living space.

Upstairs, you'll find three well-proportioned bedrooms, each filled with the potential to reflect the personalities of their new inhabitants. Whether it's a nursery, a home office, or a peaceful retreat, each room is a blank canvas waiting to be transformed. The family shower room is conveniently located on this floor, providing both functionality and comfort.

Outside, the garden at the rear is a peaceful haven, perfect for children to play or for summer barbecues. The driveway at the front of the house provides off-street parking and easy access to the home.

This house has been a much-loved family home for many years, and it's ready for a new chapter. With its blend of space, warmth, and potential, it's an ideal setting for your family's next adventure.



Porch

7'6" (2.29m) x 9'0" (2.74m)

Hallway

8'7" (2.62m) x 6'10" (2.08m)

Lounge

14'4" (4.37m) x 11'1" (3.38m)

Dining Room

11'2" (3.4m) x 6'8" (2.03m)

Kitchen

14'10" (4.52m) x 8'5" (2.57m)

Bedroom One

13'10" (4.22m) Max x 9'7" (2.92m)

Bedroom Two

13'10" (4.22m) Max x 11'4" (3.45m)

Bedroom Three

8'6" (2.59m) x 8'5" (2.57m)

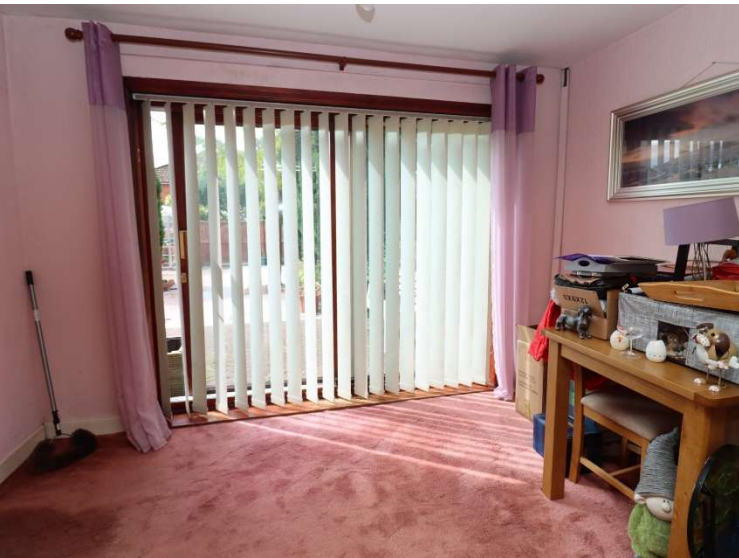
Shower Room

8'4" (2.54m) x 4'10" (1.47m)

Garage

27'11" (8.51m) x 9'3" (2.82m)

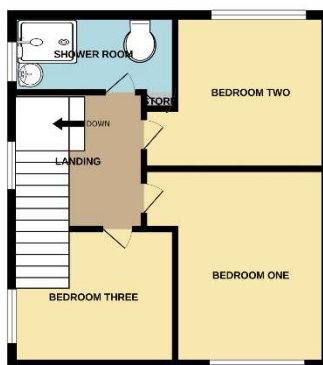
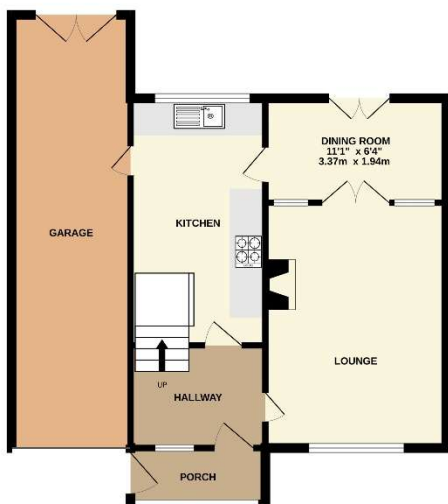






GROUND FLOOR

1ST FLOOR



Whilst every attempt has been made to ensure the accuracy of the floorplan contained here, measurements of doors, windows, rooms and any other items are approximate and no responsibility is taken for any error, omission or mis-statement. This plan is for illustrative purposes only and should be used as such by any prospective purchaser. The services, systems and appliances shown have not been tested and no guarantee as to their operability or efficiency can be given.
Made with Neopax ©2021

Disclaimer: Whilst these details are thought to be correct, their accuracy cannot be guaranteed and do not form part of any contract. It should be noted that we have not tested any fixtures, fittings, equipment, apparatus or services, therefore we cannot verify that they are in working order of fit for purpose. Solicitors should be used to confirm that any moveable items described within these details are in fact part of the sale agreement. While we try to ensure measurements are correct they are not guaranteed and purchasers are advised to take their own measurements before ordering any fixtures and fittings. Please note: if you are buying a leasehold property, please ensure that all details and conditions of the lease are checked with your solicitor prior to you incurring any costs as additional fees could be incurred for items such as leasehold packs.