



Sutherland Drive, Eastham

£240,000



LESLEY HOOKS
ESTATE AGENTS





This modern three-bedroom dormer bungalow offers a blend of style, comfort, and versatility, perfect for those looking for a ready-to-move-in home. Upon entering through the front door, you're welcomed by a spacious entrance hall that sets the tone for the rest of the property. The hallway leads to a well-designed kitchen, offering ample space for modern appliances, sleek cabinetry, and plenty of counter space for meal preparation.

Off the hallway is a bright and inviting lounge, with patio doors that open directly to the garden, seamlessly blending indoor and outdoor living. This space is ideal for relaxation or entertaining guests, with the garden becoming an extension of the living area during warmer months.

The ground floor also features two versatile bedrooms. Both of these could easily be transformed into a formal dining room or an additional sitting room, making it a perfect space for hosting gatherings or enjoying quiet evenings. A stylish and contemporary shower room completes the ground floor, offering convenience and modern fixtures.

Upstairs, the large dormer bedroom is a standout feature of this property. This spacious retreat includes a built-in wardrobe, maximizing storage while maintaining a clean, uncluttered look. The room's size provides flexibility for various uses, from a master bedroom to a home office or personal sanctuary.



Outside, the property boasts a beautifully maintained garden, perfect for outdoor dining, gardening, or simply enjoying the peaceful surroundings. A detached garage and private driveway offer ample parking and storage options, ensuring convenience for homeowners.

Overall, this dormer bungalow is move-in ready, designed for modern living with a touch of charm and flexibility to suit a variety of needs.

Hallway

7'7" (2.31m) x 4'4" (1.32m)

Lounge

15'8" (4.78m) x 11'5" (3.48m)

Kitchen

10'6" (3.2m) x 7'10" (2.39m)

Downstairs Shower room

7'7" (2.31m) x 6'2" (1.88m)

First Floor Master Bedroom

18'4" (5.59m) x 12'5" (3.78m) Max

Walk In Wardrobe

6'10" (2.08m) x 6'0" (1.83m)

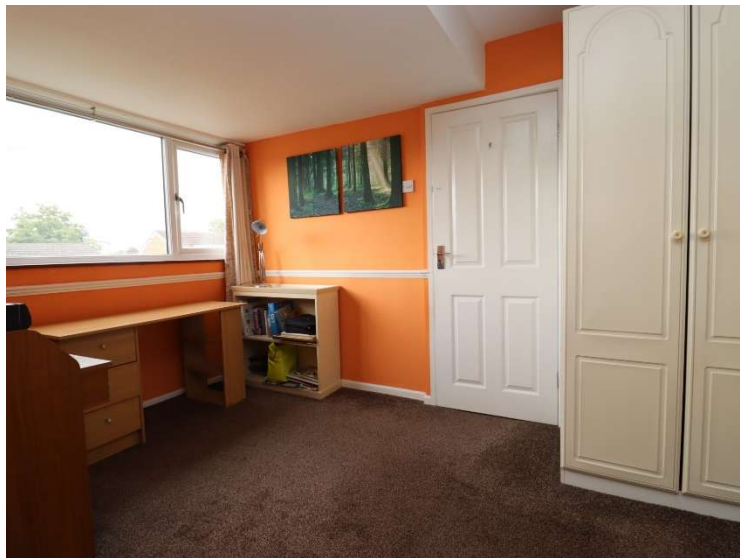
Bedroom Two

10'7" (3.23m) x 9'11" (3.02m)

Bedroom Three/Dining Room

10'0" (3.05m) x 8'5" (2.57m)

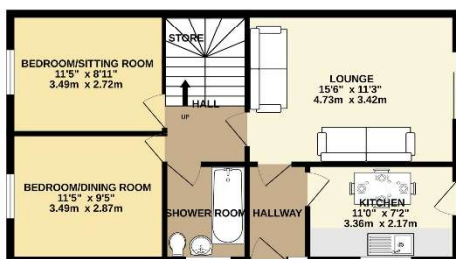
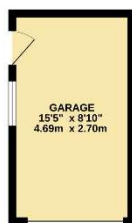






GROUND FLOOR
743 sq.ft. (69.0 sq.m.) approx.

1ST FLOOR
274 sq.ft. (25.3 sq.m.) approx.



TOTAL FLOOR AREA : 1017 sq.ft. (94.5 sq.m.) approx.

Whilst every attempt has been made to ensure the accuracy of the floorplan contained here, measurements of doors, windows, rooms and any other items are approximate and no responsibility is taken for any error, omission or mis-statement. This plan is for illustrative purposes only and should be used as such by any prospective purchaser. The services, systems and appliances shown have not been tested and no guarantee as to their operability or efficiency can be given.
Made with Netopix ©2024

ooks.co.uk
, Bromborough,
side, CH62 7HH

Disclaimer: Whilst these details are thought to be correct, their accuracy cannot be guaranteed and do not form part of any contract. It should be noted that we have not tested any fixtures, fittings, equipment, apparatus or services, therefore we cannot verify that they are in working order of fit for purpose. Solicitors should be used to confirm that any moveable items described within these details are in fact part of the sale agreement. While we try to ensure measurements are correct they are not guaranteed and purchasers are advised to take their own measurements before ordering any fixtures and fittings. Please note: if you are buying a leasehold property, please ensure that all details and conditions of the lease are checked with your solicitor prior to you incurring any costs as additional fees could be incurred for items such as leasehold packs.