



Ashfield Crescent, Brombrough

£215,000



LESLEY HOOKS
ESTATE AGENTS





This charming and spacious three-bedroom mid-terrace home offers an ideal blend of comfort and practicality, perfect for family living. As you step through the entrance porch, you're welcomed into a spacious kitchen, complete with a breakfast seating area with ample counter space and modern appliances, providing a cozy spot for casual meals and a lounge that flows seamlessly onto the dining room. This open-plan layout enhances the sense of space, making it perfect for entertaining or family gatherings.

The dining room, also opens directly onto the beautifully manicured rear garden and is ideal for more formal dining occasions. The garden itself is a true highlight, featuring a neat lawn, a relaxing seating patio area perfect for outdoor dining, and a handy storage shed.

At the front, a large driveway provides ample parking space, accommodating all the family's vehicles with ease. This home offers a blend of stylish living with practical outdoor spaces, making it a wonderful choice for growing families.

Hall
6'2" (1.88m) x 5'7" (1.7m)

Lounge
15'0" (4.57m) x 11'6" (3.51m)

Dining Room
12'2" (3.71m) x 9'3" (2.82m)

Kitchen
15'3" (4.65m) x 12'3" (3.73m)

Bedroom One
10'5" (3.18m) x 9'0" (2.74m)

Bedroom Two
10'11" (3.33m) Max x 12'3" (3.73m) Max

Bedroom Three
8'2" (2.49m) x 7'5" (2.26m)

Bathroom
7'7" (2.31m) x 6'10" (2.08m)

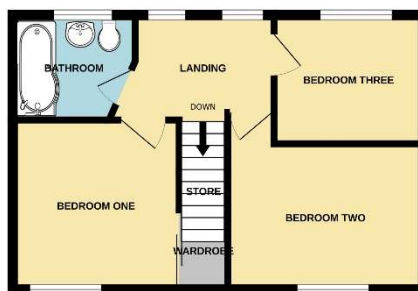




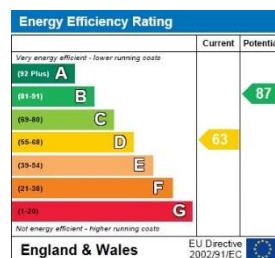


GROUND FLOOR

1ST FLOOR



Whilst every attempt has been made to ensure the accuracy of the floorplan contained here, measurements of doors, windows, rooms and any other items are approximate and no responsibility is taken for any error, omission or mis-statement. This plan is for illustrative purposes only and should be used as such by any prospective purchaser. The services, systems and appliances shown have not been tested and no guarantee as to their operability or efficiency can be given.
Made with Metropix ©2024



Disclaimer: Whilst these details are thought to be correct, their accuracy cannot be guaranteed and do not form part of any contract. It should be noted that we have not tested any fixtures, fittings, equipment, apparatus or services, therefore we cannot verify that they are in working order of fit for purpose. Solicitors should be used to confirm that any moveable items described within these details are in fact part of the sale agreement. While we try to ensure measurements are correct they are not guaranteed and purchasers are advised to take their own measurements before ordering any fixtures and fittings. Please note: if you are buying a leasehold property, please ensure that all details and conditions of the lease are checked with your solicitor prior to you incurring any costs as additional fees could be incurred for items such as leasehold packs.