



# Edgewood Drive, Bromborough

£250,000



**LESLEY HOOKS**  
ESTATE AGENTS







Welcome to the charming Robert and Sloss semi-detached house nestled in a sought-after residential area, conveniently close to local amenities. This delightful home offers not only a prime location within walking distance to shops, schools, and transport links but also boasts modern comforts and conveniences. As you step inside, you're greeted by a welcoming hallway leading to a cosy lounge, perfect for relaxing evenings, and a dining room ideal for entertaining guests. The fitted kitchen is a chef's dream, providing ample space for culinary adventures. Heading upstairs, you'll find three generously sized bedrooms, each adorned with fitted wardrobes, offering practical storage solutions. A modern shower room adds a touch of luxury to everyday living. Outside, the property impresses with a driveway providing off-road parking leading to a garage, ensuring convenience for residents. The rear garden is a tranquil oasis, featuring an artificial lawn bathed in southerly sunlight, creating an inviting space for outdoor enjoyment and relaxation. With its blend of comfort, functionality, and a desirable location, this Robert and Sloss semi-detached house is ready to welcome you home to a lifestyle of convenience and contentment. Council tax band C. Freehold.



#### **Hallway**

11'7" (3.53m) x 5'7" (1.7m)

#### **Lounge**

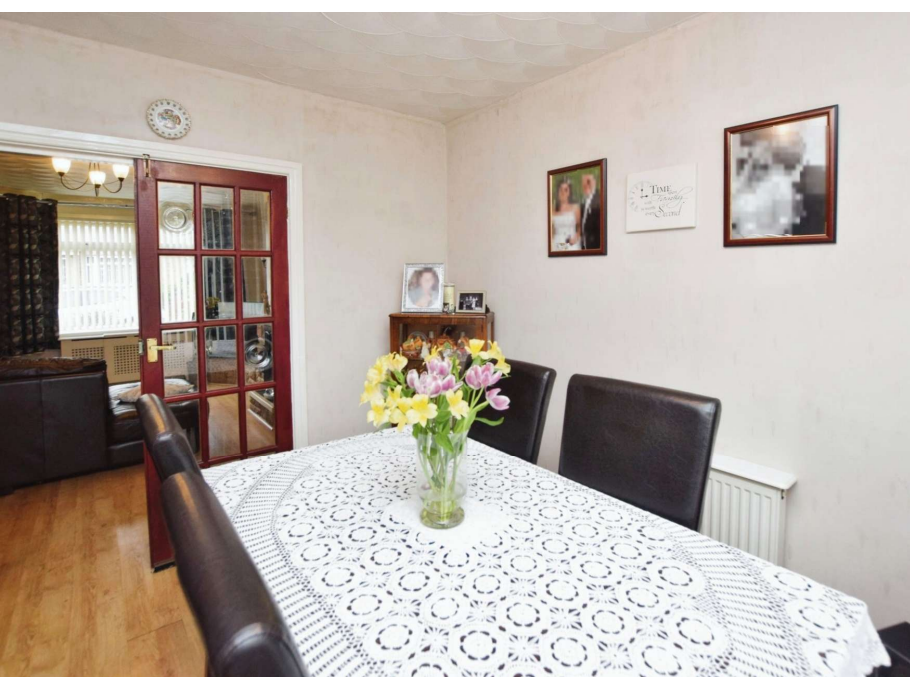
15'0" (4.57m) x 11'10" (3.61m)

#### **Dining Room**

10'9" (3.28m) x 9'4" (2.84m)

#### **Kitchen**

10'5" (3.18m) x 8'5" (2.57m)



#### **Bedroom One**

13'2" (4.01m) x 10'5" (3.18m)

#### **Bedroom Two**

11'2" (3.4m) x 10'5" (3.18m)

#### **Bedroom Three**

7'3" (2.21m) x 7'3" (2.21m)

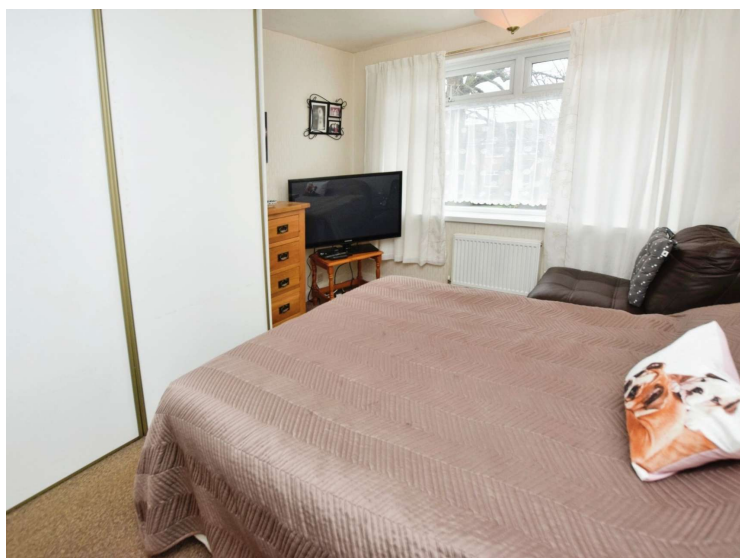
#### **Shower Room**

7'8" (2.34m) x 7'2" (2.18m)

#### **Garage**

21'0" (6.4m) x 8'5" (2.57m)







Wirral, Merseyside, CH63 7PH