



Summerfield, Bromborough

£395,000



LESLEY HOOKS
ESTATE AGENTS





Pretty as a picture! This detached family home offers well planned accommodation throughout. Having uPVC double glazing and central heating the layout comprises hallway with alarm, lounge, dining room, study, kitchen and downstairs wc. To the first floor there are four good size double bedrooms the master with en-suite and a stylish family bathroom. Outside there is sweeping driveway with off road parking for plenty of cars leading to the double garage and to the rear is a garden mostly laid to lawn with patio seating area to the side and borders of mature shrubs and trees. Located in a popular residential area the property is within easy reach of local amenities and there are local primary school and secondary schools nearby. For transport links Bromborough train station is within walking distance and access to the motorway networks is a short drive away. Interior inspection is highly recommended to appreciate the accommodation on offer here. Freehold. Council Tax Band E.



Entrance Hall

12'10" (3.91m) x 7'4" (2.24m)
Under stairs store cupboard.



Lounge

16'10" (5.13m) x 11'6" (3.51m)
Feature fireplace with gas fire, double doors opening onto the lounge, window to the front.

Dining Room

11'1" (3.38m) x 7'5" (2.26m)
Space for dining and entertaining, patio doors opening onto the garden.

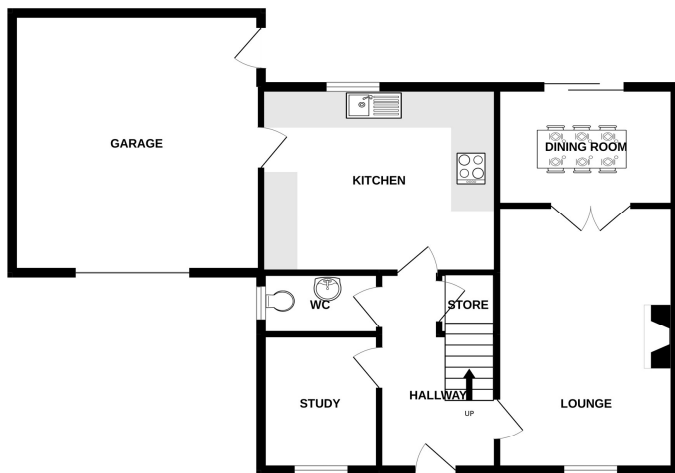
Study

8'7" (2.62m) x 7'3" (2.21m)
Window to the front.

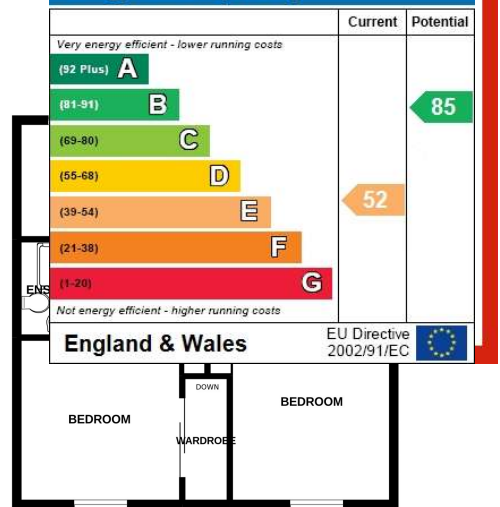




GROUND FLOOR
859 sq.ft. (79.8 sq.m.) approx.



Energy Efficiency Rating



TOTAL FLOOR AREA : 1420 sq.ft. (131.9 sq.m.) approx.

Whilst every attempt has been made to ensure the accuracy of the floorplan contained here, measurements of doors, windows, rooms and any other items are approximate and no responsibility is taken for any error, omission or mis-statement. This plan is for illustrative purposes only and should be used as such by any prospective purchaser. The services, systems and appliances shown have not been tested and no guarantee as to their operability or efficiency can be given.
Made with Metroplex ©2022

Disclaimer: Whilst these details are thought to be correct, their accuracy cannot be guaranteed and do not form part of any contract. It should be noted that we have not tested any fixtures, fittings, equipment, apparatus or services, therefore we cannot verify that they are in working order of fit for purpose. Solicitors should be used to confirm that any moveable items described within these details are in fact part of the sale agreement. While we try to ensure measurements are correct they are not guaranteed and purchasers are advised to take their own measurements before ordering any fixtures and fittings. Please note: if you are buying a leasehold property, please ensure that all details and conditions of the lease are checked with your solicitor prior to you incurring any costs as additional fees could be incurred for items such as leasehold packs.