

**Winchester Court
Castlegate
Richmond
TW9 2LQ**

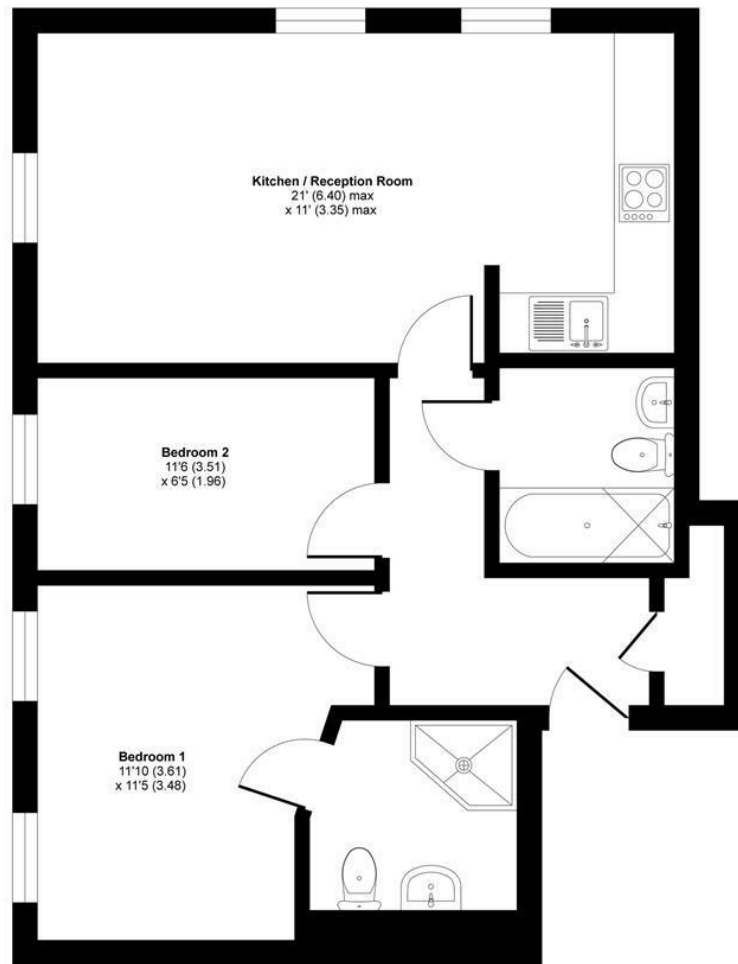
£439,950

ChaseBuchanan



Approximate Area = 612 sq ft / 57 sq m

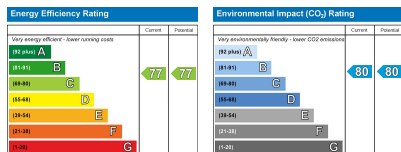
For identification only - Not to scale



THIRD FLOOR



Floor plan produced in accordance with RICS Property Measurement Standards incorporating International Property Measurement Standards (IPMS2 Residential). © nichocom 2020. Produced for Chase Buchanan. REF: 629872



- Viewings accompanied by Chase Buchanan
- Private parking
- No onward chain
- Close to transport links
- Purpose built
- Modern top floor apartment
- Long lease
- Stylish layout
- Ideal first time purchase
- EPC Rating C

This fabulous, very well presented, modern, top floor, 2 bedroom 2 bathroom apartment, in Richmond-upon-Thames, is offered with no onward chain.

Featuring private parking, a long lease, neutral décor, ample storage areas and a really good layout to include excellent entertaining space, this stylish apartment comes highly recommended.

The location of this flat provides great access to the plethora of shops, restaurants, amenities and the leisure facilities Richmond has to offer, whilst outstanding transport links in and out of London add to the undoubted appeal.

A choice of train stations, easy access to the M3 and for the tennis and golf enthusiast, Dukes Meadows, are all in close proximity, whilst Old Deer Park and The Royal Botanic Kew Gardens are ideal places to relax.

This apartment would no doubt suit a first time purchaser, rental investor or commuter alike.

For more information or to book a viewing, please contact:

020 8948 1331

ChaseBuchanan

20 Red Lion Street, Richmond, TW9 1RW

Care has been taken in the preparation of these particulars, however, their accuracy is not guaranteed and they do not form part of any contract. Measurements stated must be considered maximum.