

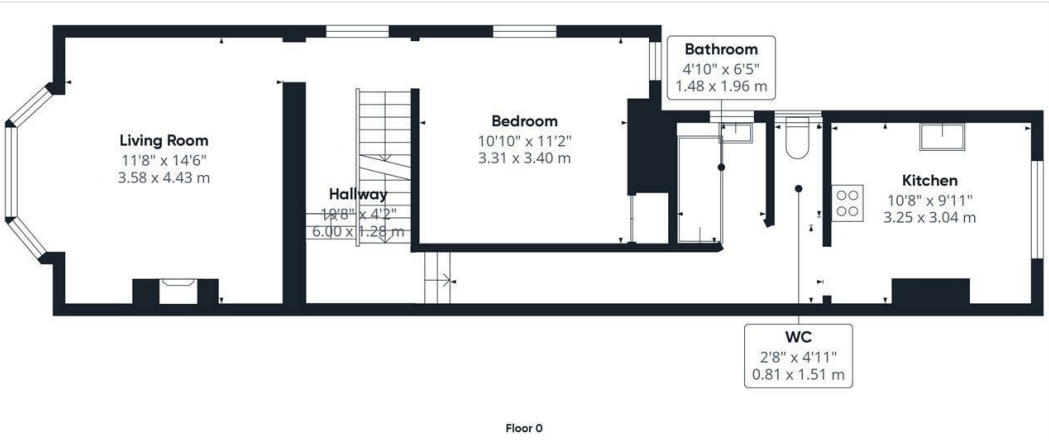
**Elm Road
London
SW14 7JL**

£2,995 Per Calendar Month

ChaseBuchanan



- Close to Mortlake station
- Three double bedrooms
- Modern kitchen with appliances
- EPC Rating: D
- Newly refurbished
- Bright and Spacious living room
- Council Tax Band: D



Floor 0



Floor 1

Approximate total area¹⁾
 834.31 ft²
 77.51 m²

Reduced headroom
 30.78 ft²
 2.86 m²

(1) Excluding balconies and terraces

Reduced headroom
 Below 5 ft/1.5 m

While every attempt has been made to ensure accuracy, all measurements are approximate, not to scale. This floor plan is for illustrative purposes only.

Calculations are based on RICS IPMS 3C standard.

GIRAFFE360

This beautifully refurbished, split-level three-bedroom, two-bathroom maisonette is just a short stroll from Mortlake train station and local amenities. The property boasts a bright and spacious lounge, a modern, fully-fitted kitchen with high-quality appliances, and three generously sized double bedrooms. Finished to an excellent standard, this home offers a perfect blend of contemporary style and comfort, ideal for modern living.

East Sheen is a charming, family-friendly area known for its excellent schools, green spaces, and close-knit community. With its proximity to Richmond Park and a variety of independent shops, cafes, and restaurants, it offers a peaceful yet vibrant lifestyle just a short commute from central London.

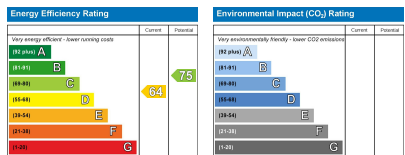
Chase Buchanan are bonded members of ARLA Property mark

For more information or to book a viewing, please contact:

020 8948 1331

ChaseBuchanan

20 Red Lion Street, Richmond, TW9 1RW



Care has been taken in the preparation of these particulars, however, their accuracy is not guaranteed and they do not form part of any contract. Measurements stated must be considered maximum.