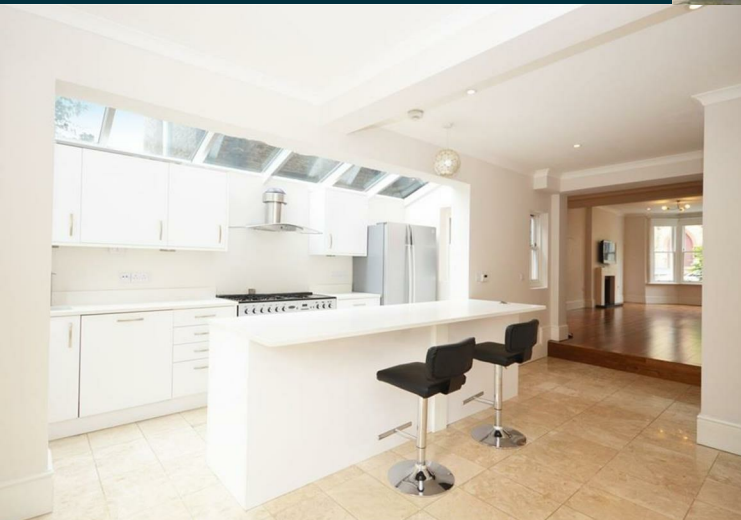


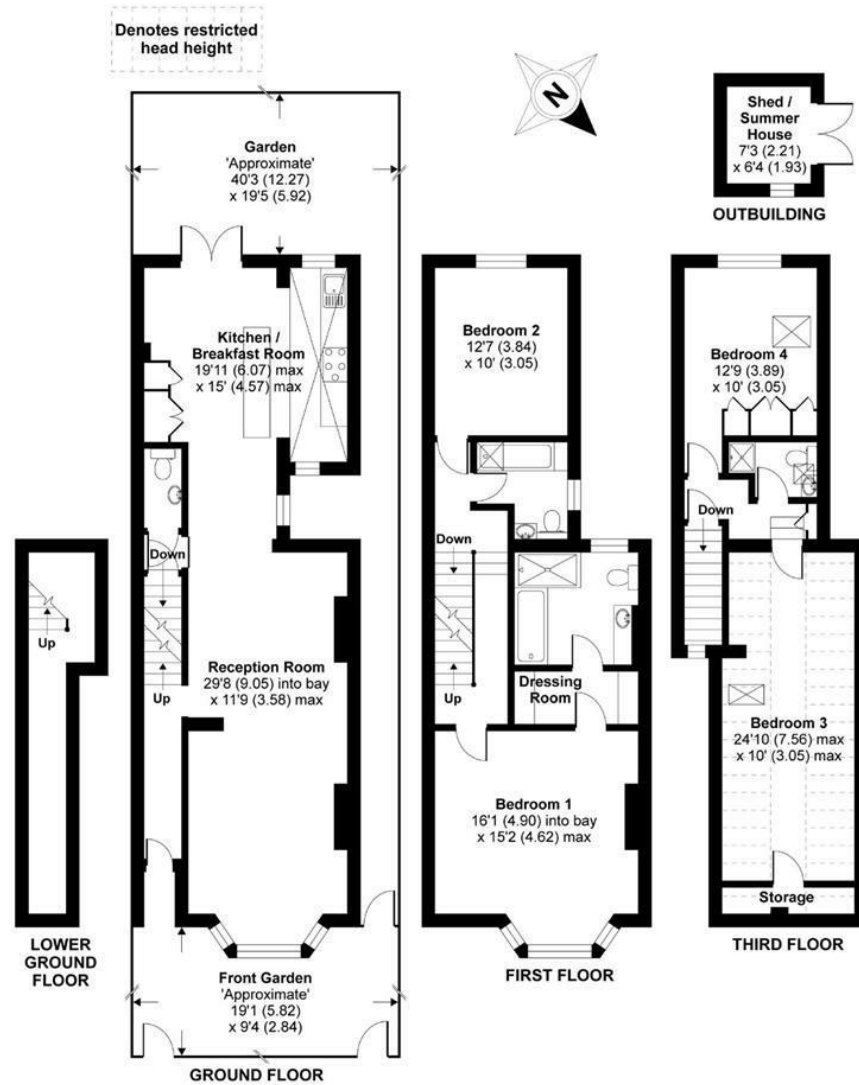
**32 Jocelyn Road
Richmond
TW9 2TH**

£5,750 PCM

ChaseBuchanan



APPROX. GROSS INTERNAL FLOOR AREA 1762 SQ FT 163.7 SQ METRES
(EXCLUDES RESTRICTED HEAD HEIGHT & OUTBUILDING)



Copyright nichecom.co.uk 2016 Produced for Chase Buchanan REF : 134609

Energy Efficiency Rating		Environmental Impact (CO ₂) Rating	
Current	Potential	Current	Potential
A	A	A	A
B	B	B	B
C	C	C	C
D	D	D	D
E	E	E	E
F	F	F	F
G	G	G	G

52 47

- Family house
- Private garden
- Designer kitchen
- EPC E
- Great location
- Wood floors
- Cellar
- Council tax band G

This wonderful family home is situated on a charming and peaceful residential street near Old Deer Park, just a short walk from central Richmond and the train station.

The ground floor features a spacious open-plan double reception room with a cosy fireplace, perfect for relaxing or entertaining guests. Additionally, there is a large designer kitchen/breakfast room with double doors that open onto a lovely southwest-facing garden.

The upper floors boast three generously sized bedrooms, including a master suite with a dressing room and en-suite bathroom. A family bathroom serves the remaining bedrooms, all of which are bright and filled with natural light.

Chase Buchanan are proud members of ARLA.

For more information or to book a viewing, please contact:

020 8948 1331

ChaseBuchanan

20 Red Lion Street, Richmond, TW9 1RW