

Albert Road
Richmond
TW10 6DJ

£930,000

ChaseBuchanan



Albert Road,

Approx. Gross Internal Floor Area
76.5 Sq M - 824 Sq Ft

ChaseBuchanan

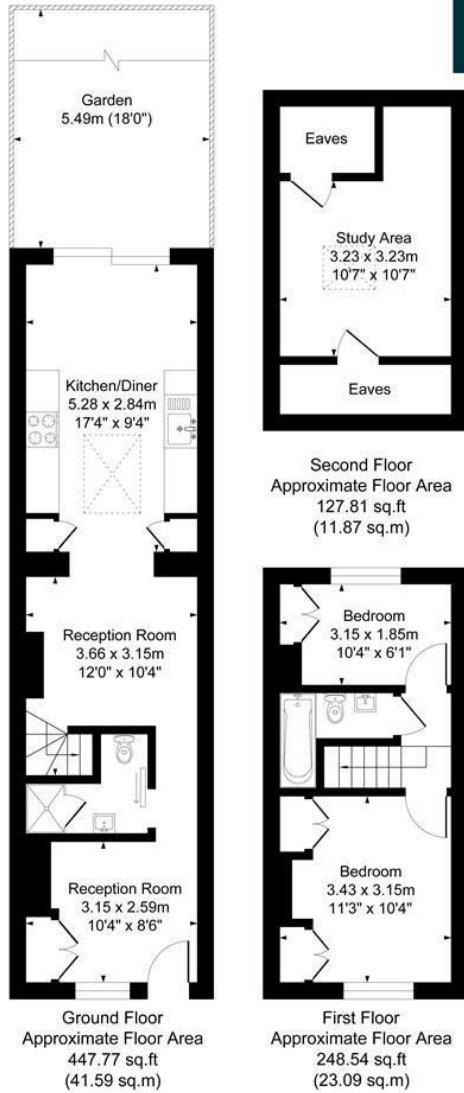
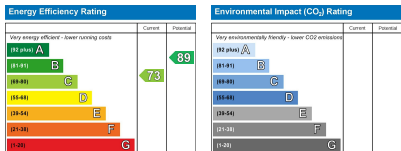


Illustration for identification purposes only, measurements are approximate, not to scale.
Produced By Esjay Property Marketing



Care has been taken in the preparation of these particulars, however, their accuracy is not guaranteed and they do not form part of any contract. Measurements stated must be considered maximum.

- Viewings accompanied by Chase Buchanan
- Situated in 'The Alberts'
- Two bedrooms, two bathrooms and a study area in loft space
- New roof, underfloor heating, bespoke shutters and ample storage solutions
- Town centre, amenities and transport links in close proximity
- Outstanding architecturally redesigned cottage, in Richmond upon Thames
- Excellent entertaining space
- West facing rear garden, perfect for summertime sunsets
- Close to Royal Richmond Park
- Open house launch, Saturday 27th July - Call to view

*** Open House Launch, Saturday 27th July – Call us to arrange your viewing ***

Situated in the heart of 'The Alberts', one of the most desirable parts of Richmond-upon-Thames, is this fabulous, beautifully presented, and skilfully extended cottage.

This gorgeous home boasts an abundance of entertaining space, a fully loaded kitchen/breakfast room with ample food preparation areas and integrated appliances, leading to the larger-than-average garden, perfect for barbeques and al fresco dining. The kitchen area has been completely redesigned and it's simply magnificent.

We also find two double bedrooms and two stylish bathrooms with quality sanitaryware. Then, built into the loft space is a sizable study area and masses of storage to the eaves. This light and airy space is a real benefit.

The landscaped garden will capture summertime sunsets to the west and is particularly secluded.

Further benefits include underfloor heating to the ground floor, double-glazed windows with bespoke shutters, and a new roof.

The residents in 'The Alberts' enjoy so much on their doorstep including, the River Thames and its glorious and enchanting towpath walks, the Royal Richmond Park and its green open spaces, the charming lanes, adjacent to Richmond Green, where you'll find an abundance of restaurants and independent shops and of course, the bustling town centre and Richmond station.

Additionally, the area is renowned for outstanding schools and great access by road and rail, in and out of London.

This tremendous extended cottage is nestled in a pretty row of Victorian houses, on a particularly sought-after road, and comes highly recommended.

You should come and see it.

For more information or to book a viewing, please contact:

020 8948 1331

ChaseBuchanan

20 Red Lion Street, Richmond, TW9 1RW