

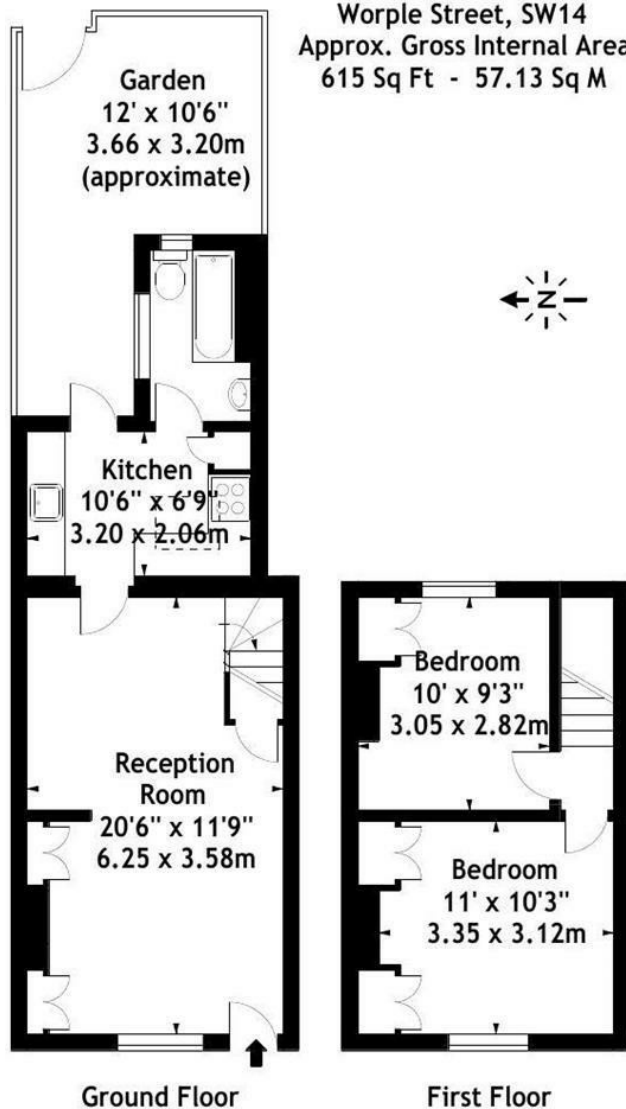
**Worple Street
London
SW14 8HE**

£2,650 PCM

ChaseBuchanan

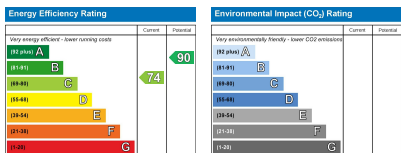


Worple Street, SW14
 Approx. Gross Internal Area
 615 Sq Ft - 57.13 Sq M



Measured in accordance with RICS guidelines. Every attempt is made to ensure accuracy, however all measurements are approximate. This floor plan is for illustrative purposes only and is not to scale.

© Datagraphy Ltd 2016
 Photographs * Floorplans * Virtual Tours
 Tel: 0845 643 4401 www.datagraphy.com



- Viewings accompanied by Chase Buchanan
- Charming features
- Private garden
- EPC - C
- Cottage
- Two double bedrooms
- Quiet cul de sac location
- Council tax band D

This delightful two-bedroom period cottage is nestled in a tranquil cul-de-sac near Mortlake Station. Impeccably presented, it exudes a warm and inviting ambiance with charming features throughout. The generous reception room boasts elegant wooden flooring, while the fully equipped kitchen leads to a private patio garden. A modern bathroom is conveniently located on the ground floor, with two spacious double bedrooms situated upstairs. Perfectly positioned for comfortable living and easy commuting, this cottage is close to local amenities.

Worple Street benefits from its proximity to the shops and amenities of East Sheen and Barnes Village. For commuters, local bus services offer easy access to Richmond and Putney, both of which provide underground links. Mortlake Station is just a short walk away. The area is also home to several outstanding primary schools, as rated by Ofsted. Additionally, the scenic River Thames towpath is nearby, and Richmond Park, Kew Gardens, and various sports clubs are all within walking distance.

Chase Buchanan is a bonded member of ARLA Propertymark

For more information or to book a viewing, please contact:

020 8948 1331

ChaseBuchanan

20 Red Lion Street, Richmond, TW9 1RW

Care has been taken in the preparation of these particulars, however, their accuracy is not guaranteed and they do not form part of any contract. Measurements stated must be considered maximum.