

**Cardigan Mansions
Richmond Hill
Richmond
TW10 6RD**

£735,000

ChaseBuchanan



Cardigan Mansions

Approx. Gross Internal Floor Area
61.5 Sq M - 663 Sq Ft

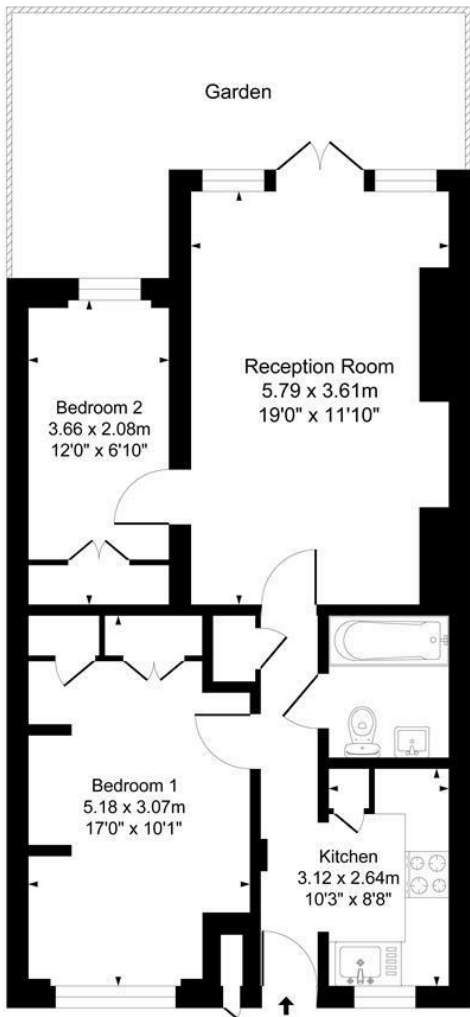


Illustration for identification purposes only, measurements are approximate, not to scale.
Produced By Esjay Property Marketing

ChaseBuchanan

- Viewings accompanied by Chase Buchanan
- Private entrance / own front door
- Solid herringbone flooring and high ceilings with Victorian style mouldings
- Super entertaining space, feature fireplace and French doors leading to gardens
- Manicured communal gardens with beautiful well stocked borders
- Stunning garden flat, located on the highly desirable Richmond Hill
- An abundance of exquisite character features
- Very well presented throughout with an Art Deco style bathroom
- Bedroom 2 - The perfect office/study/guest room
- Moments from River Thames, town centre, Richmond Park and outstanding transport links

A unique opportunity to acquire a beautiful, Victorian, purpose-built apartment, with steps leading to a private front entrance, located on the particularly desirable Richmond Hill, just moments from the Royal Richmond Park.

Situated in an imposing and striking building, the property features a private doorway and hallway leading to all the rooms and stylish accommodation. The open-plan kitchen area blends seamlessly towards the entertaining space, where you'll find the lounge/family area, this really is the 'hub of the property' and is certainly complemented by high ceilings with large French windows bringing in masses of natural light, whilst the kitchen features integrated appliances and generous food preparation areas. Additionally, a family bathroom, plenty of storage space, and bespoke wardrobes add to the appeal. The master bedroom is very well proportioned with ample space for a dressing table and chest of drawers, whilst the second bedroom is also perfect as an office/study or guest room.

The shared garden really is quite wonderful, ideal for summertime barbeques and al fresco dining. It's a tranquil spot, West facing, ideal for evening sunsets and you can even catch a glimpse of the enchanting towpath and River Thames.

Additionally, and of a huge benefit, a share of the freehold is included.

The location of this super maisonette provides excellent access to the town centre, where you will find a plethora of shops, fine restaurants and charming lanes packed with boutiques and independent shops, The River and Richmond Green, whilst The Vineyard School, Kings House School, Royal Richmond Park, and the outstanding transport links of Richmond-upon-Thames are nearby too.

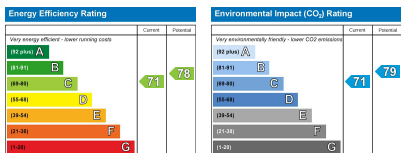
This magnificent property comes highly recommended – Please call us to arrange your viewing.

For more information or to book a viewing, please contact:

020 8948 1331

ChaseBuchanan

20 Red Lion Street, Richmond, TW9 1RW



Care has been taken in the preparation of these particulars, however, their accuracy is not guaranteed and they do not form part of any contract. Measurements stated must be considered maximum.