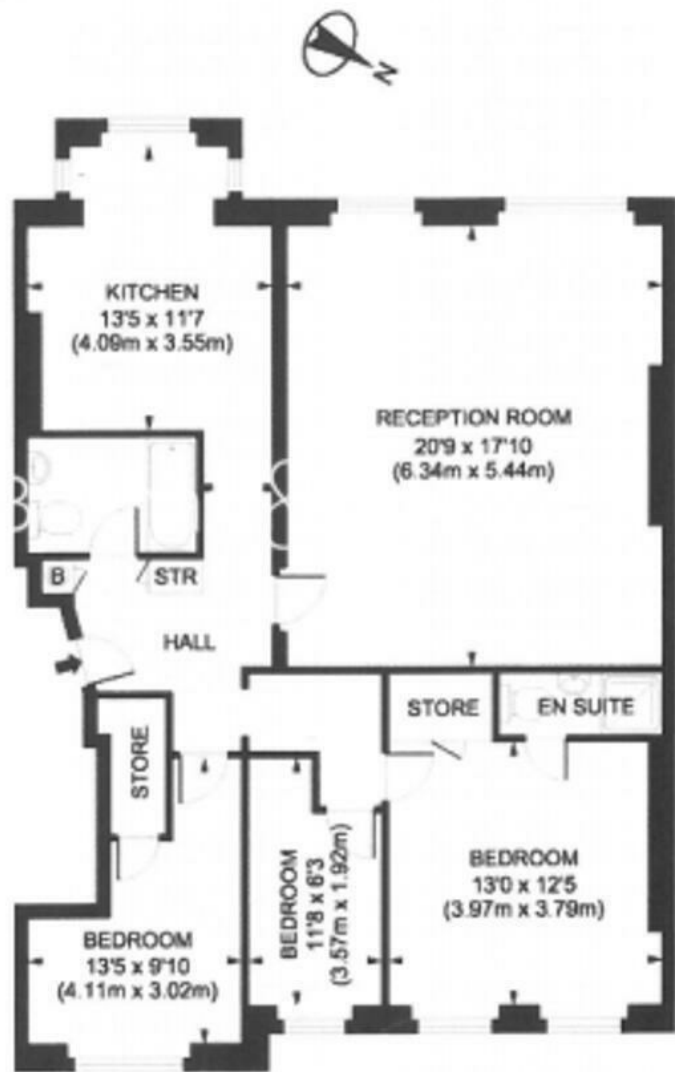


**Portland Terrace  
Richmond  
TW9 1QQ**

£4,500 PCM

**ChaseBuchanan**





- Views across Richmond Green
- Three Bedrooms
- Communal Garden
- First Floor Apartment
- Two Bathrooms
- EPC C

This impressive three bedroom apartment is set within a beautiful white stucco fronted house with views across Richmond Green and located in the heart of Richmond just moments from the shops and Train Station.

As soon as you walk into this apartment you get a feeling of space, with large rooms, neutral decor and high ceilings. This is the ideal place to come home to and relax after a hard day at work. There is plenty of space for entertaining, the large living room has large windows with views across Richmond Green.

In addition to this there are three bedrooms, two of which are doubles; with an ensuite shower room to the master bedroom as well as a further family bathroom.

This stunning home is offered in excellent condition and benefits from access to a lovely communal garden.

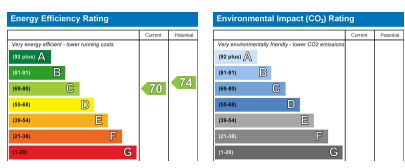
Chase Buchanan are bonded members of ARLA and the Tenancy Deposit Scheme.

For more information or to book a viewing, please contact:

020 8948 1331

**ChaseBuchanan**

20 Red Lion Street, Richmond, TW9 1RW



Care has been taken in the preparation of these particulars, however, their accuracy is not guaranteed and they do not form part of any contract. Measurements stated must be considered maximum.