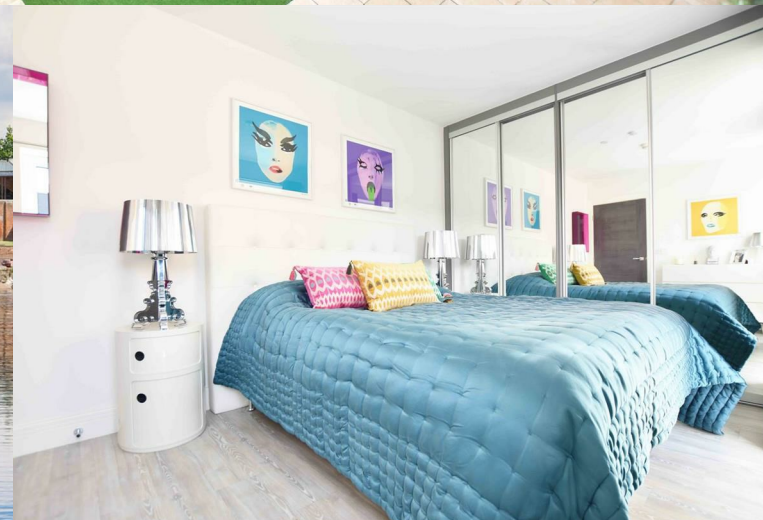


**Swan Court Swan Street
Isleworth
TW7 6XW**

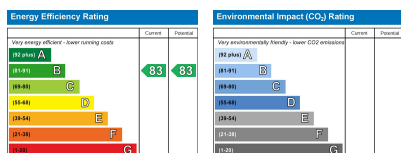
£399,950

ChaseBuchanan





Kitchen/Living/Dining Room	6.50m x 4.35m	21'4" x 14'3"
Bedroom	4.50m x 2.65m	14'9" x 8'8"
Total Internal Area	47.2 Sq. m.	508 Sq. ft.



Care has been taken in the preparation of these particulars, however, their accuracy is not guaranteed and they do not form part of any contract. Measurements stated must be considered maximum.

- Viewings accompanied by Chase Buchanan
- Private balcony
- Secure parking
- Built in 2018
- Third floor apartment
- Offered with no onward chain
- Lift serviced
- Riverside location
- Close to Richmond & St Margarets
- Council Tax band D

A simply stunning modern one-bedroom apartment, located in this riverside development built by Bellway Homes in 2018.

Located on the third floor of this secure lift serviced block, the accommodation comprises an open-plan living room with a dining area and kitchen, a private balcony, a large double bedroom, a modern bathroom and a large storage cupboard. Further benefits include underfloor heating, secure underground parking, NHBC warranty, 900+ year lease and an audio-visual entry phone system.

Lion Wharf really is a super place to live, with a wonderful stretch of the river Thames just on your doorstep, you are surrounded by old walkways, Riverside history and beautiful scenery on the bend of the river opposite Old Deer Park.

Close by is Syon Park, with an award-winning garden centre, Hilton Hotel and glorious grounds. Lion Wharf is also well placed for the amenities of St Margarets and Richmond within short walking distance.

For more information or to book a viewing, please contact:

020 8948 1331

ChaseBuchanan

20 Red Lion Street, Richmond, TW9 1RW