

Lock Road  
Richmond  
TW10 7LH

£1,125,000

ChaseBuchanan



**Lock Road TW10**  
 Approx. Gross Internal Floor Area  
 108.5 Sq M - 1167 Sq Ft

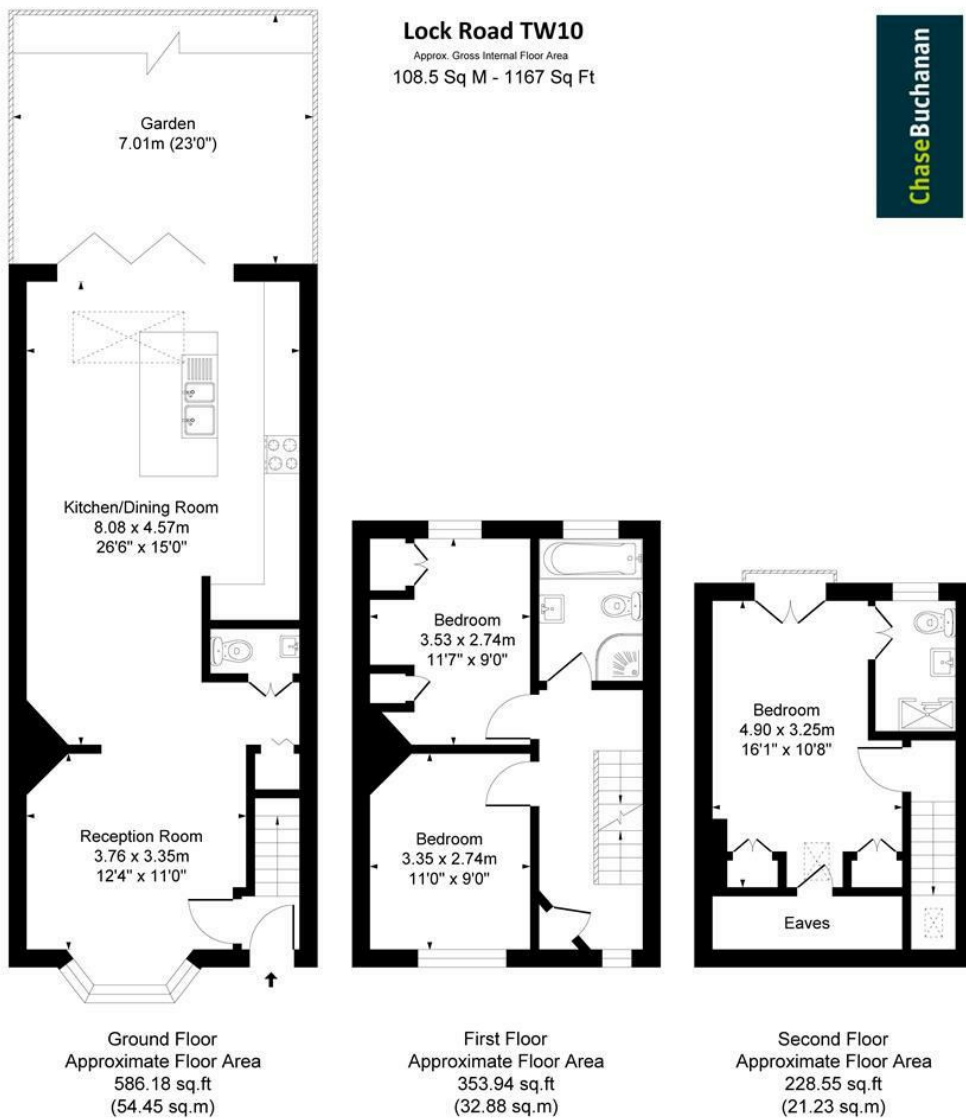
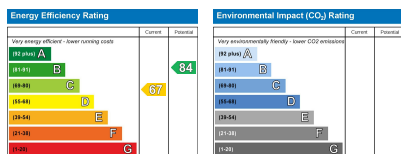


Illustration for identification purposes only, measurements are approximate, not to scale.  
 Produced By Esjay Property Marketing



- Viewings accompanied by Chase Buchanan
- Beautifully presented, extended and loft converted cottage
- Idyllic Ham Common location, near Richmond upon Thames
- Kitchen/Breakfast room
- An abundance of entertaining space
- Master bedroom with stylish en-suite shower room
- Lovely rear garden, perfect for a family
- Royal Richmond Park and Ham Gate in close proximity
- Outstanding schools nearby
- Good access to Richmond and Kingston upon Thames

Beautifully designed and arranged over three floors and nestled in an enchanting side road, moments from the glorious Ham Common and its picturesque duck pond, near Richmond-upon-Thames, is this unique and very pretty, extended, end of terrace Victorian cottage.

Featuring an abundance of entertaining space, perfect for sitting and dining with friends, the property flows beautifully to a well-proportioned kitchen/breakfast room, with doors leading out to the rear garden. The kitchen boasts a glazed atrium-style roof, so it's flooded with natural light, whilst the breakfast bar is the perfect spot for children to enjoy their first meal of the day. A downstairs cloakroom completes the ground floor.

To the upper floors we find three well-proportioned bedrooms, a family bathroom and then a superb ensuite shower room adjacent to the master bedroom. To the bedrooms you will find excellent storage solutions and to the bathrooms, quality sanitary ware.

This stylish home also boasts a lovely, leafy, well-stocked south-east facing garden, perfect for a family.

The location of this magnificent home really is quite wonderful - With a plethora of shops, restaurants and amenities in nearby Richmond, outstanding schools and an array of leisure facilities are on-hand too.

Residents can enjoy a walk along the historic towpath of the River Thames, whilst the nearby Richmond Golf Club, and Royal Richmond Park add to the appeal, for sure.

This charming extended property comes highly recommended - Please call now to view.

For more information or to book a viewing, please contact:

020 8948 1331

**ChaseBuchanan**

20 Red Lion Street, Richmond, TW9 1RW