

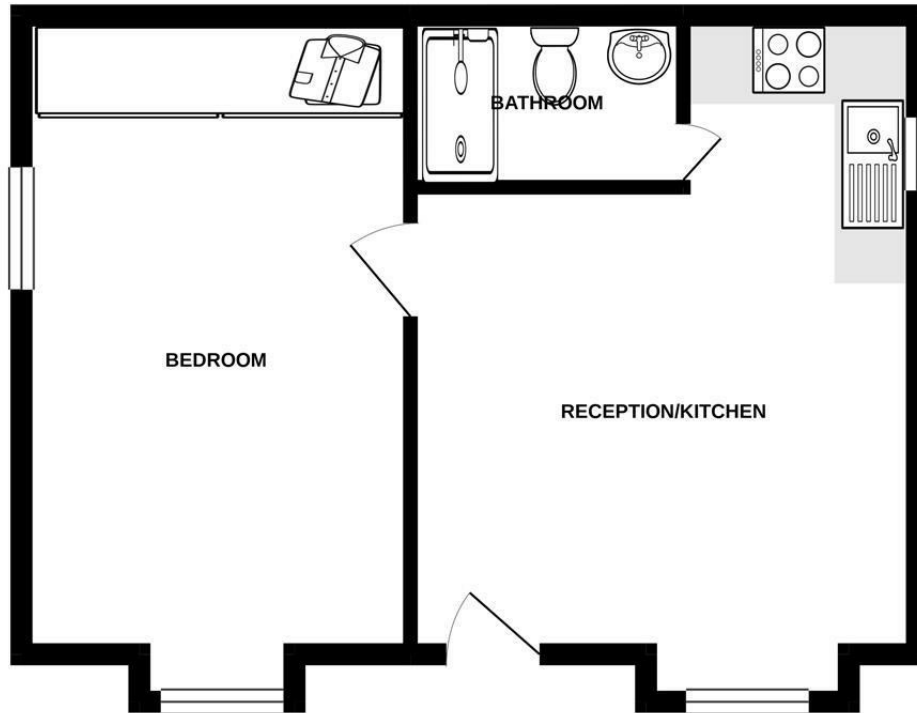
Sheen Road
Richmond
TW9 1UF

£1,450

ChaseBuchanan

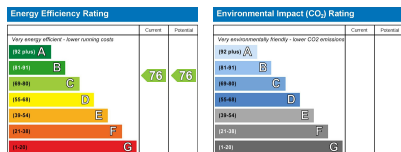


GROUND FLOOR
422 sq.ft. (39.2 sq.m.) approx.



TOTAL FLOOR AREA : 422 sq.ft. (39.2 sq.m.) approx.

Whilst every attempt has been made to ensure the accuracy of the floorplan contained here, measurements of doors, windows, rooms and any other items are approximate and no responsibility is taken for any error, omission or mis-statement. This plan is for illustrative purposes only and should be used as such by any prospective purchaser. The services, systems and appliances shown have not been tested and no guarantee is given as to their operability or efficiency can be given.
Made with Metropix 10/2021.



- Viewings accompanied by Chase Buchanan
- Own entrance
- Newly refurbished
- Large bedroom
- Open plan
- Fitted wardrobes
- EPC C
- Council tax band B

Nestled close to the town centre of Richmond is this fabulous, refurbished ground floor apartment, one of two in a detached building with its own entrance. This apartment features an open plan living room, modern fitted kitchen with integrated appliances, a modern bathroom suite and a good sized double bedroom with fitted wardrobes.

This apartment is particularly well located within close distance of the mainline and district line stations, as well as the plethora of restaurants, bars, boutiques and shops in the town centre, not forgetting the Royal Richmond Park at the top of the hill.

Chase Buchanan are bonded members of ARLA Property mark.

For more information or to book a viewing, please contact:

020 8948 1331

Chase Buchanan

20 Red Lion Street, Richmond, TW9 1RW

Care has been taken in the preparation of these particulars, however, their accuracy is not guaranteed and they do not form part of any contract. Measurements stated must be considered maximum.