

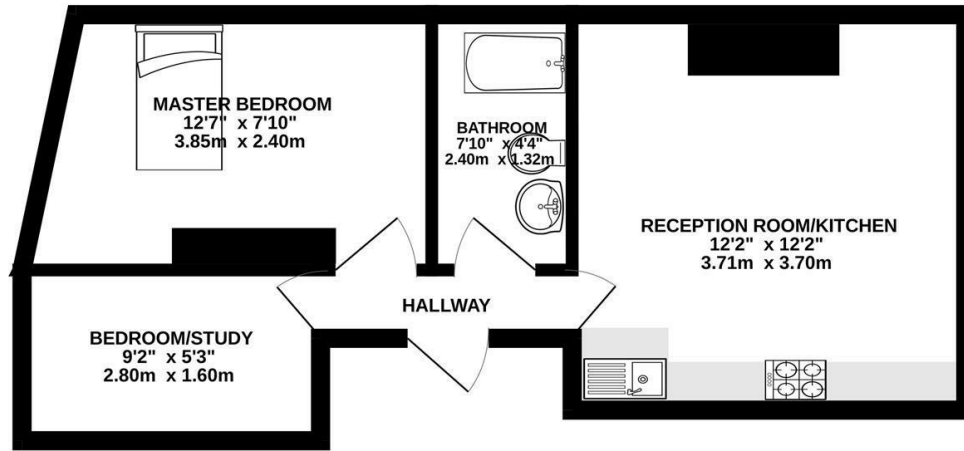
**Kew Road  
Richmond  
TW9 2PN**

£1,750

**ChaseBuchanan**



FIRST FLOOR  
326 sq.ft. (30.3 sq.m.) approx.



TOTAL FLOOR AREA : 326 sq.ft. (30.3 sq.m.) approx.  
Produced solely for Chase Buchanan  
Made with Metropix ©2023

- Two bedrooms
- Walking distance to Richmond station
- Great location
- First-floor conversion flat
- Open plan lounge/kitchen area
- EPC C

Discover this charming one-bedroom first-floor conversion flat nestled within a period property, conveniently located within walking distance of Richmond train station.

The property boasts a tastefully designed open-plan lounge/kitchen area featuring integrated appliances. Enjoy the comfort of a spacious double bedroom, along with an additional versatile room perfect for use as an office or walk-in wardrobe

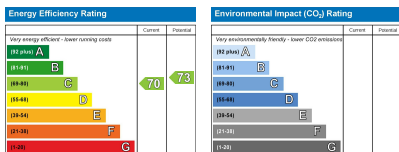
Chase Buchanan are bonded members of ARLA Property mark.

For more information or to book a viewing, please contact:

020 8948 1331

**Chase Buchanan**

20 Red Lion Street, Richmond, TW9 1RW



Care has been taken in the preparation of these particulars, however, their accuracy is not guaranteed and they do not form part of any contract. Measurements stated must be considered maximum.