

**Kings Road
Richmond
TW10 6EG**

£1,850 PCM

ChaseBuchanan

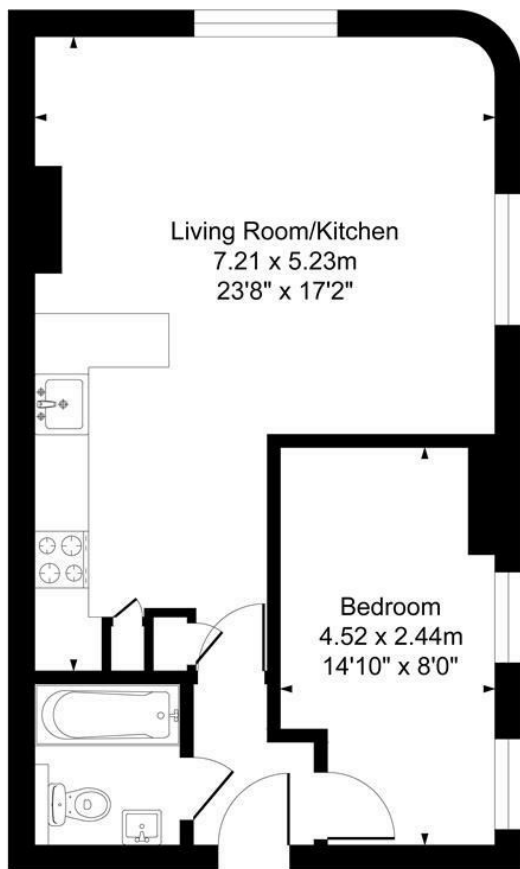


Kings Road TW9

Approx. Gross Internal Floor Area
48.0 Sq M - 517 Sq Ft

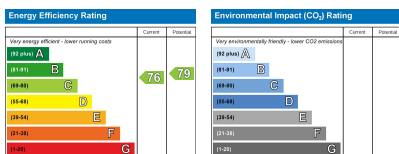


ChaseBuchanan



First Floor

Illustration for identification purposes only, measurements are approximate, not to scale.



Care has been taken in the preparation of these particulars, however, their accuracy is not guaranteed and they do not form part of any contract. Measurements stated must be considered maximum.

- Beautifully apartment
- Stunning bathroom
- Great location
- Council Tax band D
- Outstanding layout
- Modern kitchen
- EPC C

Introducing this exquisite former 'Show Flat,' part of a delightful small development in the heart of Richmond upon Thames, now available for letting.

Nestled on the lower slopes of Richmond Hill, this splendid apartment is a highly recommended choice. The well-appointed space showcases large dual aspect windows, high ceilings, and brand-new plush carpets, all complemented by exceptional architecture and meticulous attention to detail.

The generously sized open plan reception room provides an ideal setting for entertaining and dining with guests. The kitchen, seamlessly integrated with high-end appliances, resides in a sleek, modern space adorned with black glass work surfaces, ample food preparation areas, and abundant storage.

The bedroom offers ample room for wardrobes and a chest of drawers, while the stunning family bathroom features Duravit sanitary ware and a full-sized bathtub with a shower overhead.

The property's prime location ensures excellent access to mainline and district line stations, a vibrant selection of restaurants, bars, and shops in the town center, as well as the scenic Royal Richmond Park atop the Hill. Additionally, residents can benefit from a generous bike store.

Chase Buchanan are bonded members of ARLA Property mark.

For more information or to book a viewing, please contact:

020 8948 1331

ChaseBuchanan

20 Red Lion Street, Richmond, TW9 1RW