

**Riverside House Water  
Lane  
Richmond  
TW9 1TJ**

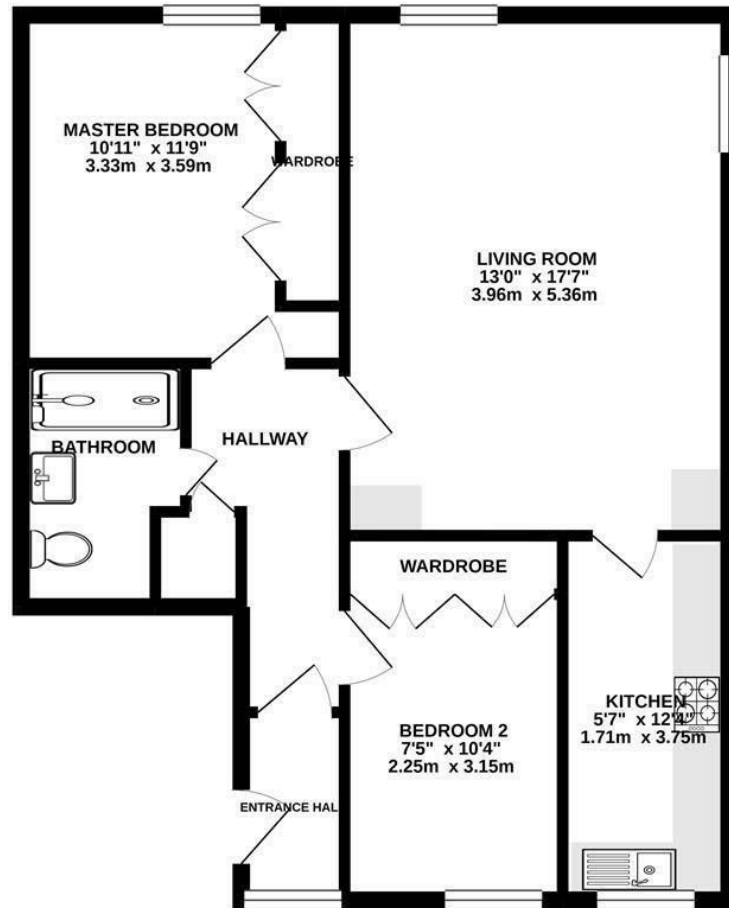
£565,000

**ChaseBuchanan**



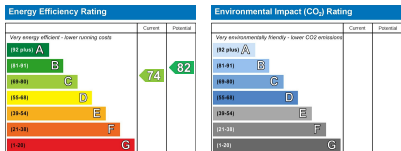
642 sq.ft. (59.6 sq.m.) approx.

## First Floor



TOTAL FLOOR AREA : 642 sq.ft. (59.6 sq.m.) approx.

Whilst every attempt has been made to ensure the accuracy of the floorplan contained here, measurements of doors, windows, rooms and any other items are approximate and no responsibility is taken for any error, omission or mis-statement. This plan is for illustrative purposes only and should be used as such by any prospective purchaser. The services, systems and appliances shown have not been tested and no guarantee as to their operability or efficiency can be given.  
Made with Metropex. ©2021.



- Viewings accompanied by Chase Buchanan
- Outstanding Riverside location, in Richmond upon Thames
- Situated in a pretty, characterful and enchanting cobbled street
- First floor apartment
- Ample entertaining space
- Fitted kitchen with integrated appliances
- Highly desirable area
- No onward chain
- Excellent transport links, amenities and leisure facilities nearby
- Ideal first time acquisition

Nestled right in the heart of Richmond upon Thames' Riverside and glorious towpath walk, situated adjacent to a wonderful, historic, and enchanting stretch of the River is this super first-floor apartment.

This generously proportioned property features excellent entertaining space, in the shape of a spacious lounge/diner and separate kitchen, boasting integrated appliances and ample food preparation areas.

The receiving hallway leads to the reception room where dual aspect views can be found, whilst both bedrooms are sizable with fitted wardrobes, additionally, there is a modern bathroom with a deluxe shower cubicle and contemporary sanitary ware.

This outstanding apartment is literally moments from the town centre where an array of restaurants, bars and boutiques can be found.

The theatre, a choice of cinemas and a plethora of shops are also in close proximity, whilst connections into London can be accessed via the mainline and district line station and the nearby A316 and M4.

The perfect first-time purchase – Call us to view.

For more information or to book a viewing, please contact:

020 8948 1331

**ChaseBuchanan**

20 Red Lion Street, Richmond, TW9 1RW

Care has been taken in the preparation of these particulars, however, their accuracy is not guaranteed and they do not form part of any contract. Measurements stated must be considered maximum.