

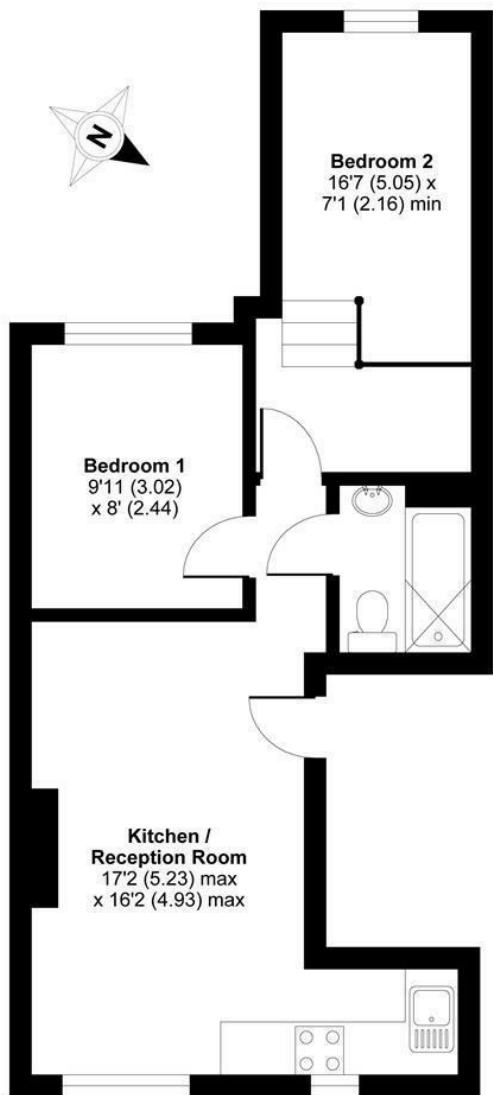
**Evelyn Road  
Richmond  
TW9 2TF**

**£1,950 PCM**

**ChaseBuchanan**

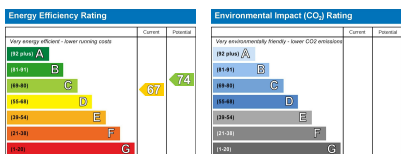


APPROX. GROSS INTERNAL FLOOR AREA 469 SQ FT 43.5 SQ METRES



FIRST FLOOR

Copyright nichecom.co.uk 2018 Produced for Chase Buchanan REF : 242453



- Viewings accompanied by Chase Buchanan
- Outstanding location, in Richmond upon Thames
- Ample entertaining and dining space
- Train and tube connections, moments away
- A very stylish Victorian conversion flat
- Split level design and super layout
- An array of eateries and shops in close proximity
- Close to Old Deer Park and leisure facilities

Situated in a particularly desirable side road in Richmond upon Thames is this well presented and very stylish first floor Victorian conversion flat.

Featuring a spacious open-plan kitchen/lounge/diner with stylish oak flooring, spotlights, brushed chrome sockets and quality double glazed, sash hung windows, with bespoke blinds, this property is offered with no onward chain.

The kitchen includes integrated 'Whirlpool' appliances, whilst the bathroom boasts a cast iron bath, chrome mixer taps, shower head and a contemporary tiled finish. The master bedroom offers space for wardrobes and a chest of drawers and its stylish split-level arrangement is further enhanced with a south facing skylight and window.

Furthermore, oak skirting boards and gas central heating add to the appeal. Well located for excellent access to the station, tube, the town centre and Old Deer Park, whilst Kew Gardens and Richmond Park are also nearby.

For more information or to book a viewing, please contact:

020 8948 1331

**ChaseBuchanan**

20 Red Lion Street, Richmond, TW9 1RW

Care has been taken in the preparation of these particulars, however, their accuracy is not guaranteed and they do not form part of any contract. Measurements stated must be considered maximum.