

**Richmond Hill Court
Richmond
TW10 6BE**

£695,000

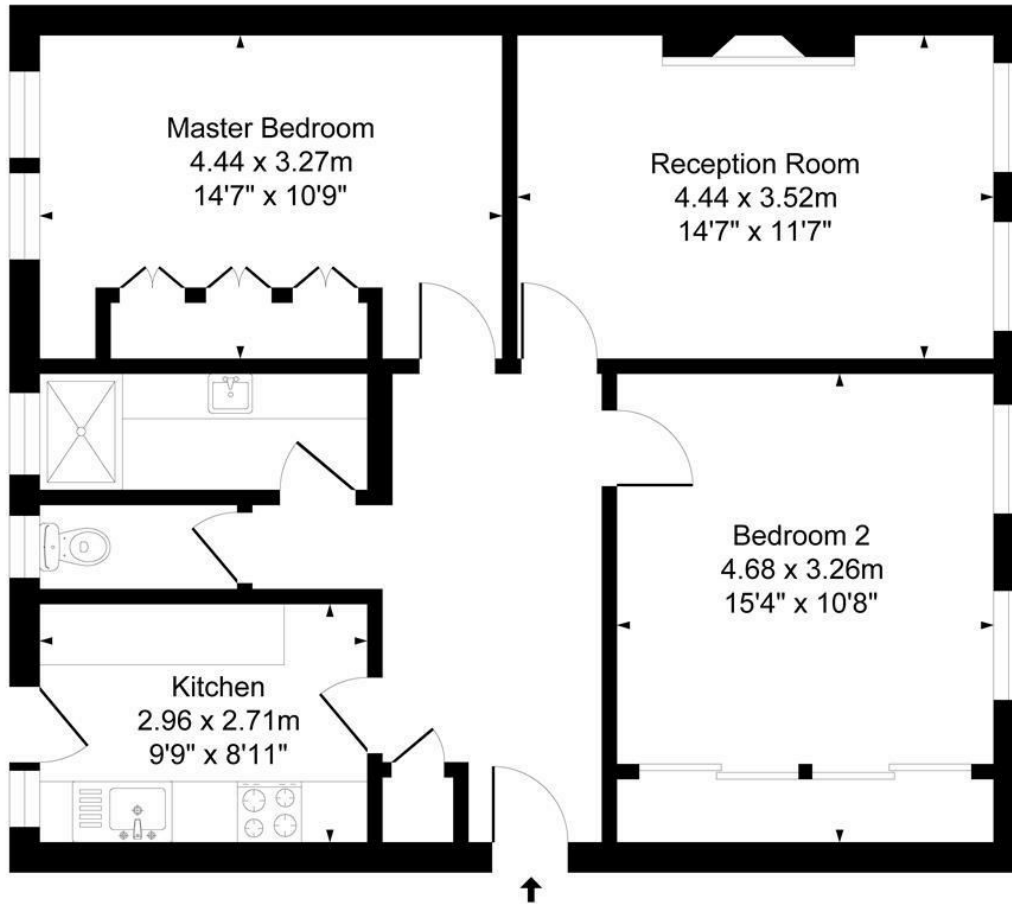
ChaseBuchanan



Richmond Hill Court

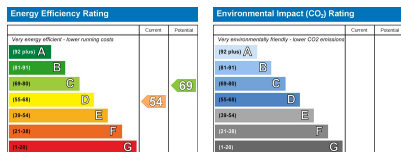
Approx. Gross Internal Floor Area
77.9 Sq M - 839 Sq Ft

ChaseBuchanan



Ground Floor

Illustration for identification purposes only, measurements are approximate, not to scale.



- Viewings accompanied by Chase Buchanan
- Private underground parking space
- Adjacent to Terrace Gardens and River Thames towpath
- Close to Richmond Park
- No onward chain
- Large ground floor apartment, on Richmond Hill
- Idyllic location
- Amenities and transport links in close proximity
- Residents tennis court
- Council Tax Band F

This very well appointed ground floor apartment of circa 800 square feet is nestled in a particularly salubrious spot in a private development on Richmond Hill, adjacent to the beautiful Terrace Gardens in Richmond upon Thames.

Featuring expansive living accommodation, in the shape of a very well-proportioned reception room, with ample space for entertaining, then a beautifully equipped kitchen with integrated appliances, ample food preparation areas, a gas hob and masses of storage space. The high ceilings add to the appeal, whilst private underground residents parking (allocated space 10) is a particularly notable feature. The bathroom is very tastefully finished, with contemporary sanitary-ware and stylish fittings and both bedrooms are very well proportioned, with built in wardrobes and ample space for dressing tables and chests of drawers.

The location of this magnificent apartment lends itself to a commuter who might take advantage of Richmond station or indeed, a resident who'd like to take in the plethora of amenities, restaurants and leisure facilities Richmond upon Thames has to offer.

The historic and picturesque towpath walks along The River and of course, the magnificent Royal Richmond Park is moments away, at the top of the hill.

With porters on-site, the use of a hard tennis court for residents and so much more, this property certainly comes highly recommended.

No onward chain - Call now to view.

Lease 963 years. Ground Rent £20.00 pa. Review period - Yearly. Service Charge £5178.00 pa. Review period - Yearly. (All details concerning the terms of the lease and outgoings are subject to verification).

For more information or to book a viewing, please contact:

020 8948 1331

ChaseBuchanan

20 Red Lion Street, Richmond, TW9 1RW