



Asking Price £285,000 Leasehold

1 Bedroom, Apartment - Retirement

10, Betjeman Lodge Corve Street, Ludlow, Shropshire, SY8 1DJ

 **0800 077 8717**

 **sales@churchillsl.co.uk**

 **churchillsl.co.uk**

Churchill
Sales & Lettings
Retirement Property Specialists

Betjeman Lodge

Betjeman Lodge is a stunning development of 44 one and two-bedroom apartments situated in Ludlow, a location steeped in history. Perfectly located close to local amenities and expertly built to enable an active and independent retirement.

Ludlow has many things on offer from walking around the historic town to visiting the Castle and St Laurence's Church.

The Lodge is in the perfect place for transport with a bus stop right outside. Ludlow train station is 0.2 miles away and has direct links to Manchester Piccadilly, Holyhead and Carmarthen.

The Lodge Manager is on hand throughout the day to support the Owners and keep the development in perfect shape as well as arranging many regular events in the Owners' Lounge from coffee mornings to games afternoons.

A Guest Suite is available for your friends and family to stay in. In addition, you are entitled to use of the Guest Suites at all Churchill Living developments across the country. Prices are available from the Lodge Manager.

Betjeman Lodge is managed by the award winning Churchill Estates Management, working closely with Churchill Living and Churchill Sales & Lettings to maintain the highest standards of maintenance and service for every lodge and owner.

Betjeman Lodge requires at least one apartment resident to be over the age of 60 with any second resident of a minimum age of 55.



0800 077 8717



sales@churchillsl.co.uk



churchillsl.co.uk

Property Overview

****ONE BEDROOM GROUND FLOOR RETIREMENT APARTMENT WITH PATIO****

Churchill Sales & Lettings are delighted to be marketing this one bedroom apartment which benefits from a patio overlooking the communal gardens. The property is conveniently located near the owners lounge and entrance.

The Living Room is generous in size offering ample space for living and dining room furniture. There is a feature bay window that provides lots of natural light. A French door opens to the owners private patio and a further door leads through to the Kitchen.

The Kitchen offers a range of modern eye and base level units with working surfaces over and tiled splashbacks. There is a built in waist height oven, 4 ring electric hob, washer/dryer, fridge and frost-free freezer.

The Bedroom is a good sized double room with a built in wardrobe. There is plenty of space for additional furniture and a window keeps this bedroom bright and light.

The Bathroom offers a bath tub with overhead shower and a handrail, a WC, wash hand basin with vanity unit beneath and a heated towel rail.

Perfectly complimenting this wonderful apartment is a useful walk in storage cupboard located in the hallway.

Call us today to book your viewing at Betjeman Lodge!



Features

- One bedroom ground floor apartment with patio
- Modern fitted kitchen with integrated appliances
- Lodge Manager available 5 days a week
- Owners Lounge & coffee bar with regular social events
- 24 hour Careline system for safety and security
- Owners private car park
- Close to the town centre & excellent transport links
- Buggy store with charging points
- A Guest Suite is available for your friends and family to stay in. In addition, you are entitled to use the Guest Suites at all Churchill Living developments across the country



Key Information

Service Charge (Year Ending 31st May 2026): £3,030.72 per annum.

Ground rent £812.65 per annum. To be reviewed April 2032.

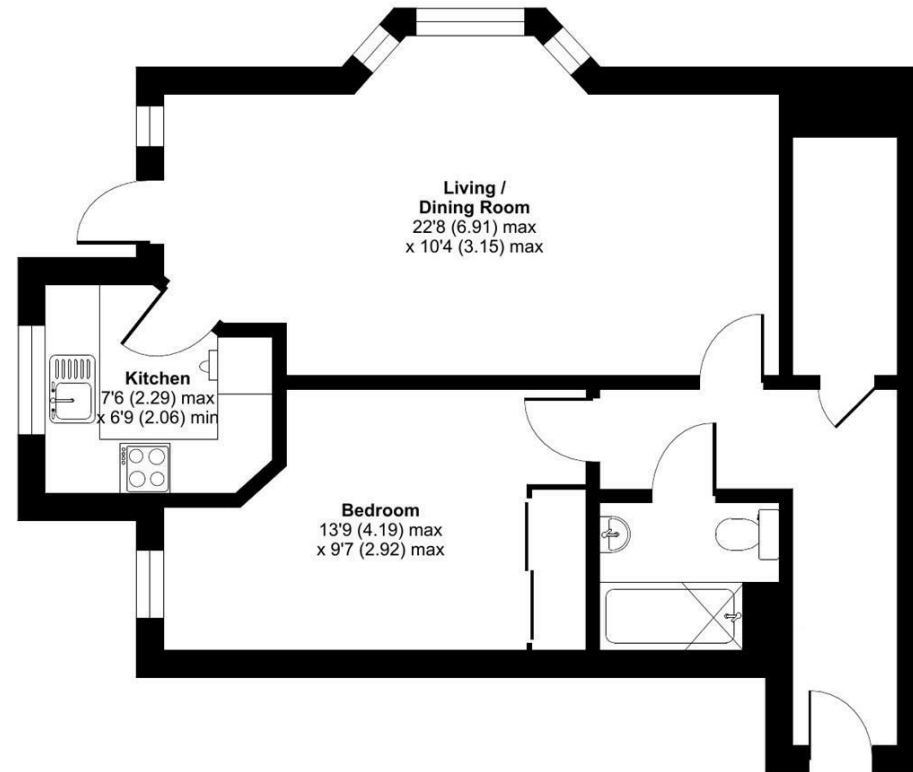
Council Tax Band B

999 year Lease commencing 2018

Please check regarding Pets with Churchill Estates Management. Any consents given in relation to pets are subject to the terms of the lease and any further rules and regulations made by Churchill Estates Management.

Service charges include: Careline system, buildings insurance, Ground Source Heating, water and sewerage rates, communal cleaning, utilities and maintenance, garden maintenance, lift maintenance, lodge manager and a contribution to the contingency fund.

Approximate Area = 604 sq ft / 56.1 sq m
For identification only - Not to scale



EPC Rating: B

 Floor plan produced in accordance with RICS Property Measurement 2nd Edition, Incorporating International Property Measurement Standards (IPMS2 Residential). © nichecom 2025. Produced for Churchill Sales & Lettings Limited. REF: 1383697

DESCRIPTION Measurements are approximate and some may be maximum on irregular walls.

CONSENTS We have not had sight of any relevant building regulations, guarantees or planning consents. All relevant documentation pertaining to this property should be checked with your legal advisor before exchanging contracts.

Property Particulars Disclaimer: These particulars are intended only as general guidance. The Company therefore gives notice that none of the material issued or visual depictions of any kind made on behalf of the Company can be relied upon as accurately describing any of the Specified Matters prescribed by any Order made under the Consumer Protection from Unfair Trading Regulations, 2008. Nor do they constitute a contract, part of a contract or a warranty.



☎ 0800 077 8717

✉ sales@churchillsl.co.uk

🌐 churchillsl.co.uk

Churchill
Sales & Lettings
Retirement Property Specialists