



£1,250 PCM

1 Bedroom, Apartment - Retirement

25, Stokes Lodge 3 Park Lane, Camberley, Surrey, GU15 3FU

 0800 077 8717

 [lettings@churchillsl.co.uk](mailto:lettings@churchillsl.co.uk)

 [churchillsl.co.uk](http://churchillsl.co.uk)

**Churchill**  
Sales & Lettings  
Retirement Property Specialists

# Stokes Lodge

Stokes Lodge is a development of 61 one and two bedroom retirement apartments ideally located on the edge of the main shopping centre of Camberley. The development features a Terrace Lounge leading out to a stunning Roof Terrace with outdoor seating, along with a Wellbeing Suite and Communal laundry room.

Both the apartment and Lodge are heated by a modern high efficiency centralised communal gas boiler, the cost of which is included in the service charges.

Camberley offers a wide range of independent shops and high street names as well as a purpose built, modern entertainment complex. The Atrium features a range of shops and leisure facilities including a 9 screen cinema, bowling, health and fitness club, cafes and restaurants.

Nearby, Frimley Lodge Park is a multi-award winning 'Green Flag' park and includes access to the Canal, a miniature railway, pitch and putt, Flourish Community Garden, BBQ hire, play areas and sport pitches. There are many options for health and fitness, which include two purpose built leisure centres - The Arena and Lightwater - private gyms, numerous golf courses and water sports on Mytchett Lake.

Transport facilities are excellent with regular bus services linking Camberley to the nearby areas of Sandhurst, The Meadows Shopping Centre, Bracknell, Farnham and Woking to name a few. Camberley Train Station offers services to Guildford, Ascot and London Waterloo.

The Lodge manager is on hand throughout the day to support the Owners and keep the development in perfect shape as well as arranging many regular events in the Owners' Lounge from coffee mornings to games afternoons.

A Guest Suite is available for your friends and family to stay in. In addition, you are entitled to use of the Guest Suites at all Churchill Retirement Living developments across the country. Prices are available from the Lodge Manager.

Stokes Lodge has been designed with safety and security at the forefront. The apartment has an emergency Careline system installed, monitored by the onsite Lodge Manager during the day and 24 hours, 365 days a year by the Careline team. Careline integrated intruder alarm, secure video entry system and sophisticated fire and smoke detection systems throughout both the apartment and communal areas provide unrivalled peace of mind.

Stokes Lodge is managed by the award winning Churchill Estates Management, working closely with Churchill Retirement Living and Churchill Sales & Lettings to maintain the highest standards of maintenance and service for every lodge and owner.

Stokes Lodge requires at least one apartment resident to be over the age of 60 and any second resident to be over the age of 55.



# Property Overview

Churchill Sales & Lettings are delighted to be marketing this lovely one bedroom first floor apartment conveniently located for the lift and stairs. The property offers deceptively spacious accommodation throughout and is presented in good decorative order.

The Lounge offers ample space for living and dining room furniture and has a feature electric fireplace with attractive surround.

The Kitchen is accessed via the Lounge and offers a range of eye and base level units with working surfaces over and tiled splashbacks. There is a built in waist height oven, 4 ring electric hob with extractor hood over, a fridge and a freezer.

The Bedroom is a generous double room with a useful built in mirrored wardrobe and plenty of space for additional bedroom furniture if required.

The Shower Room offers a large shower cubicle with handrail, heated towel rail, a WC and wash hand basin with vanity unit beneath.

Perfectly complementing this wonderful apartment is a useful storage cupboard located in the hallway.



# Features

- One bedroom first floor retirement apartment
- Good decorative order throughout
- RENT INCLUDES WATER & SWERAGE RATES, HEATING & CARELINE SYSTEM
- Convenient for the lift and stairs
- Lodge manager available 5 days a week
- Terrace Lounge leading to roof terrace with outside seating
- Wellbeing suite and communal laundry room
- 24 Hour Careline system for safety and security
- Owners private car park
- A Guest Suite is available for your friends and family to stay in. In addition, you are entitled to use of the Guest Suites at all Churchill Retirement Living developments across the country.



# Key Information

OVER 60's RETIREMENT APARTMENT

Council Tax Band C

Please check regarding Pets with Churchill Estates Management. Any consents given in relation to pets are subject to the terms of the lease and any further rules and regulations made by Churchill Estates Management

LANDLORD PAYS: Service charges include: Careline system, buildings insurance, water and sewerage rates, apartment heating, communal cleaning, utilities and maintenance, garden maintenance, lift maintenance, lodge manager and a contribution to the contingency fund.

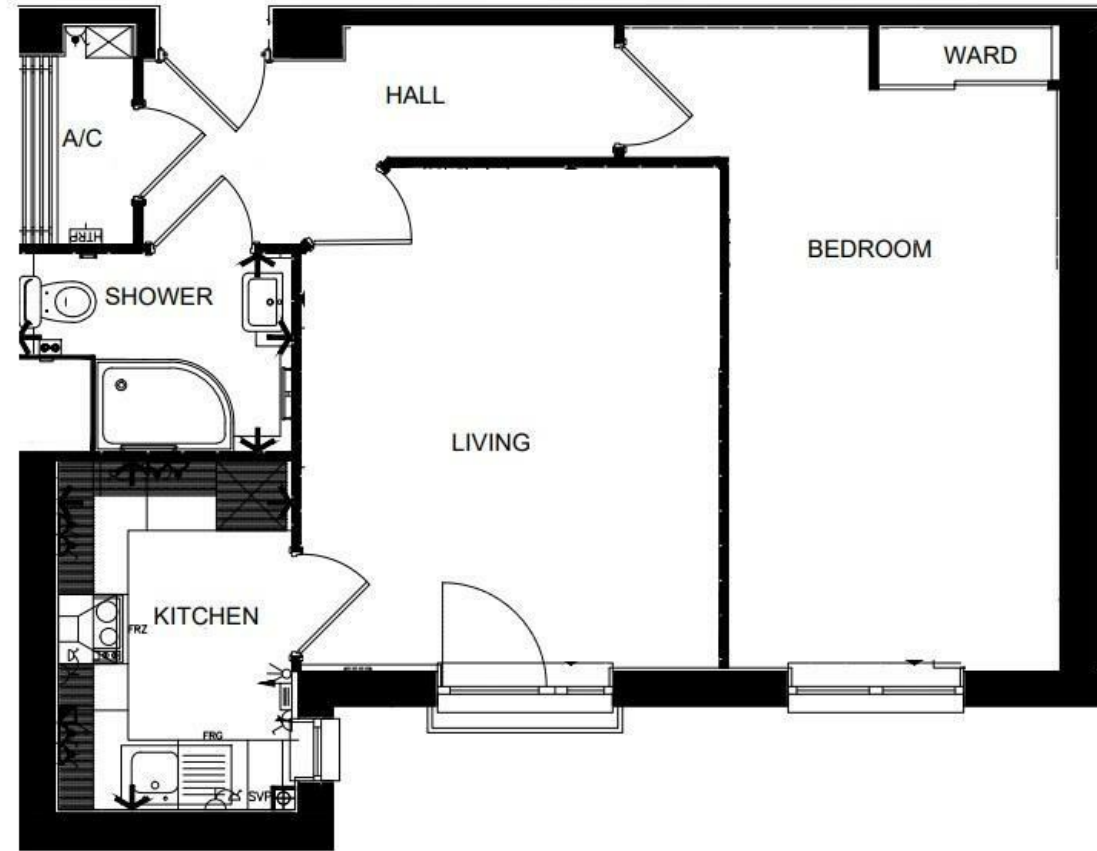
### Security Deposit

A security deposit equal to 5 week's rent will be payable at the start of the tenancy. This covers damages or defaults on the part of the tenant during the tenancy. It will be reimbursed at the end of the tenancy subject to the details of the agreement and the findings of the inventory check out report.

### Holding Deposit

A holding deposit equal to 1 weeks rent will be payable on acceptance of an application. This will be held and used towards the first months rent

Please note: The holding deposit will be withheld if the applicant(s) or any relevant person (including any guarantor(s)) withdraw from the tenancy, fail a Right-to-Rent check, provide materially significant false or misleading information, or fail to sign their tenancy agreement (and / or Deed of Guarantee) within 30 days (or other deadline as mutually agreed in writing).



Living	Width	11'-10" [3610] max	Length	14'-1" [4290] max
Kitchen	Width	6'-7" [2010] max	Length	9'-10" [3005] max
Shower room	Width	7'-9" [2365] max	Length	5'-8" [1715] max
Bedroom	Width	9'-3" [2825] max	Length	18'-0" [5485] max

EPC Rating: B

DESCRIPTION Measurements are approximate and some may be maximum on irregular walls.

CONSENTS We have not had sight of any relevant building regulations, guarantees or planning consents all relevant documentation pertaining to this property should be checked with your legal advisor before exchanging contracts.

Property Particulars Disclaimer: These particulars are intended only as general guidance. The Company therefore gives notice that none of the material issued or visual depictions of any kind made on behalf of the Company can be relied upon as accurately describing any of the Specified Matters prescribed by any Order made under the Consumer Protection from Unfair Trading Regulations, 2008. Nor do they constitute a contract, part of a contract or a warranty.



📞 0800 077 8717

✉️ [lettings@churchillsl.co.uk](mailto:lettings@churchillsl.co.uk) 🌐 [churchillsl.co.uk](http://churchillsl.co.uk)

**Churchill**  
Sales & Lettings  
Retirement Property Specialists