



---

Asking Price £229,950 Leasehold

2 Bedroom, Apartment - Retirement

27, Tudor Lodge 331-335 Warwick Road, Solihull, West Midlands, B92 7AA

 0800 077 8717

 [sales@churchillsl.co.uk](mailto:sales@churchillsl.co.uk)

 [churchillsl.co.uk](http://churchillsl.co.uk)

**Churchill**  
Sales & Lettings  
Retirement Property Specialists

# Tudor Lodge

Tudor Lodge is a delightful development of 30 one and two bedroom apartments in Solihull, West Midlands. The Dove House shopping precinct is adjacent to Tudor Lodge and offers a wide range of outlets including cafes, restaurants, hairdresser, dentist, newsagent, Post Office, supermarket, a cook shop and a specialist butcher.

The town, along with its 18 beautiful parks, offers you the opportunity to enjoy such activities as cycling, golf, tennis and bowls. It is also home to the world famous National Exhibition Centre which stages a great variety of shows and exhibitions throughout the year.

Transport in the area is excellent with a bus stop right outside the Lodge. Solihull railway station is just 1.5 miles away and Birmingham International Airport just 5 miles away.

The Lodge manager is on hand to support the Owners and keep the development in perfect shape.

A Guest Suite is available for your friends and family to stay in. In addition, you are entitled to use of the Guest Suites at all Churchill Living developments across the country. Prices are available from the Lodge Manager.

Tudor Lodge has been designed with safety and security at the forefront, the apartment has an emergency Careline system installed, monitored by the onsite Lodge Manager during the day and 24 hours, 365 days a year by the Careline team. A Careline integrated intruder alarm, secure video entry system and sophisticated fire and smoke detection systems throughout both the apartment and communal areas provide unrivalled peace of mind.

Tudor Lodge is managed by the award winning Churchill Estates Management, working closely with Churchill Living and Churchill Sales & Lettings to maintain the highest standards of maintenance and service for every lodge and owner.



# Property Overview

Churchill Sales & Lettings are delighted to be marketing this one bedroom second floor apartment in the charming Tudor Lodge. The property offers deceptively spacious accommodation and is presented in superb order throughout.

The Kitchen, which is accessed via the Lounge, offers a range of eye and base level units with working surfaces over and tiled splashbacks. There is a built in waist height oven, 4 ring electric hob with extractor hood over, a fridge and freezer.

The Lounge offers ample space for living and dining room furniture and has a feature electric fireplace.

Bedroom one is a generous double room with a useful built in mirrored wardrobe and plenty of space for additional bedroom furniture if required. A large window keeps the room light and bright.

Bedroom two is another good size room with a window and could be used as a study or hobby room.

The Shower Room offers modern fittings including a large shower cubicle with handrail, a WC and wash hand basin with vanity unit beneath.

Perfectly complementing this wonderful apartment are two useful storage cupboards located in the hallway.

Call us today to book a viewing at Tudor Lodge!



# Features

- Two bedroom second floor apartment
- Owners' private car park
- Lodge Manager available 5 days a week
- Owners Lounge and Kitchen
- Olton Railway Station is just under a mile away
- 24 hour Careline system for safety and security
- Great location close to shopping facilities and bus routes
- A Guest Suite is available for your friends and family to stay in. In addition, you are entitled to use of the Guest Suites at all Churchill Living developments across the country.



# Key Information

Service Charge (Year Ending 31st May 2025):  
£3,782.57 per annum.

Ground rent £933.34 per annum. To be reviewed in  
May 2029

Council Tax Band D

125 year Lease commencing 2008

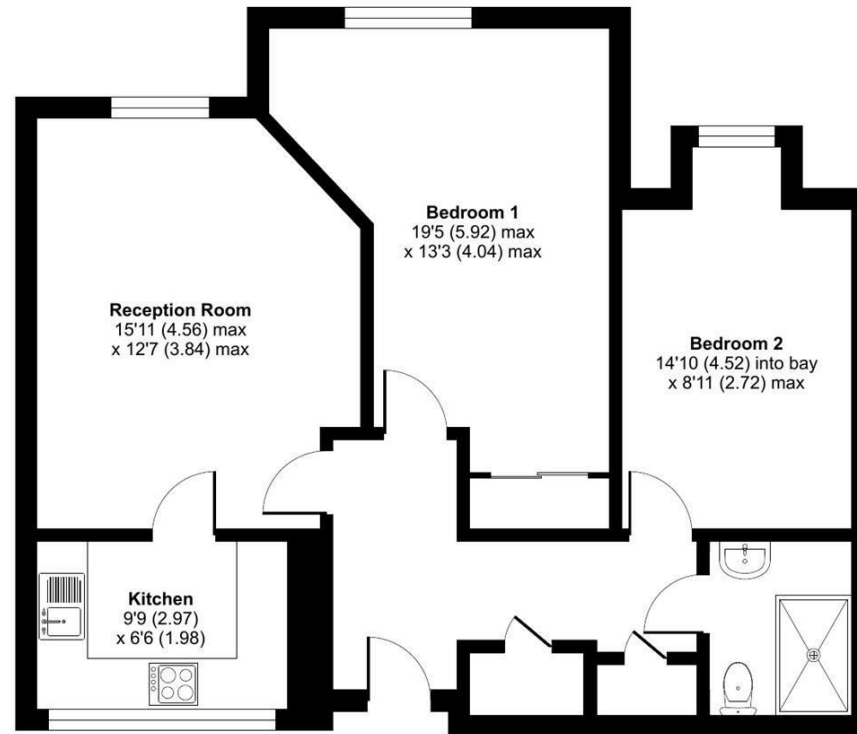
Please check regarding Pets with Churchill Estates  
Management. Any consents given in relation to pets  
are subject to the terms of the lease and any further  
rules and regulations made by Churchill Estates  
Management

Service charges include: Careline system, buildings  
insurance, water and sewerage rates, communal  
cleaning, utilities and maintenance, garden  
maintenance, lift maintenance, lodge manager and a  
contribution to the contingency fund.

A 1% contribution of the final selling price to the  
contingency fund is payable by the Seller upon  
completion of the sale of the property.

EPC Rating: C

Approximate Area = 746 sq ft / 69.3 sq m  
For identification only - Not to scale



Floor plan produced in accordance with RICS Property Measurement Standards incorporating  
International Property Measurement Standards (IPMS2 Residential). © nichecom 2024.  
Produced for Churchill Estate Agents. REF: 1167965

DESCRIPTION Measurements are approximate and some may be maximum on irregular walls.

CONSENTS We have not had sight of any relevant building regulations, guarantees or planning consents all relevant documentation pertaining to this property should be checked with your legal advisor before exchanging contracts.

Property Particulars Disclaimer: These particulars are intended only as general guidance. The Company therefore gives notice that none of the material issued or visual depictions of any kind made on behalf of the Company can be relied upon as accurately describing any of the Specified Matters prescribed by any Order made under the Consumer Protection from Unfair Trading Regulations, 2008. Nor do they constitute a contract, part of a contract or a warranty.



☎ 0800 077 8717

✉ sales@churchillsl.co.uk

🌐 churchillsl.co.uk

**Churchill**  
Sales & Lettings  
Retirement Property Specialists