



£329,950 Leasehold

1 Bedroom, Apartment - Retirement

6, Knights Lodge North Close, Lymington, Hampshire, SO41 9PB

📞 0800 077 8717

✉ sales@churchillsl.co.uk

🌐 churchillsl.co.uk

Churchill
Sales & Lettings
Retirement Property Specialists

Knights Lodge

Knights Lodge is a stylish development of 41 one and two bedroom retirement apartments situated on North Close in Lymington. The Georgian market town of Lymington is positioned within the New Forest National Park and is situated on the Lymington River on the Solent. A street market is held in the town every Saturday which attracts visitors from near and far to shop for everyday produce including fruit and vegetables, bread, meat and cakes, as well as clothes, jewellery, local crafts and household items. Knights Lodge is ideally located for access to the high street which has a mix of national and independent retailers, as well as high street banks, opticians, florists, travel agents, gift shops, supermarkets, cafes and public houses. Lymington Library is situated on North Close. The cobbled street of the old town leads you to the Quay where you will find a mixed array of luxury yachts and fishing boats, and where you can take a cruise along the Lymington River. The town has two marinas and two sailing clubs and is home to the Royal Lymington Yacht Club.

Lymington Town railway station is located in Station Street where South West Trains operates services to Lymington Pier and to Brockenhurst where connecting trains can be boarded for destinations including Southampton, Winchester, London Waterloo, Poole, Weymouth and Manchester. The Isle of Wight car and passenger ferry operates regularly between Lymington and Yarmouth taking just 40 minutes, making it the shortest and fastest route to the Isle of Wight.

The Lodge manager is on hand throughout the day to support the Owners and keep the development in perfect shape as well as arranging many regular events in the Owners' Lounge from coffee mornings to games afternoons.

A Guest Suite is available for your friends and family to stay in. In addition, you are entitled to use of the Guest Suites at all Churchill Retirement Living developments across the country. Prices are available from the Lodge Manager.

Knights Lodge has been designed with safety and security at the forefront, the apartment has an emergency Careline system installed, monitored by the onsite Lodge Manager during the day and 24 hours, 365 days a year by the Careline team. A Careline integrated intruder alarm, secure video entry system and sophisticated fire and smoke detection systems throughout both the apartment and communal areas provide unrivalled peace of mind.

Knights Lodge is managed by the award winning Churchill Estates Management, working closely with Churchill Retirement Living and Churchill Sales & Lettings to maintain the highest standards of maintenance and service for every lodge and owner.

Knights Lodge requires at least one apartment Owner to be over the age of 60 with any second Owner over the age of 55.



Property Overview

Churchill Sales & Lettings are pleased to be marketing this one bedroom ground floor apartment overlooking the communal garden. The property offers deceptively spacious accommodation throughout and is presented in good order.

The Lounge offers ample space for living and dining room furniture and has a feature electric fireplace with attractive surround. A door opens onto the Juliet Balcony.

The Kitchen offers a range of eye and base level units with working surfaces over and tiled splashbacks. There is a built in waist height oven, 4 ring electric hob with extractor hood over, a fridge, a frost-free freezer and washer/dryer. A window allows for light and ventilation.

The Bedroom is a generous double room with a useful built in mirrored wardrobe and plenty of space for additional bedroom furniture if required.

The Shower Room offers a large shower cubicle with handrail, heated towel rail, a WC and wash hand basin with vanity unit beneath.

Perfectly complementing this lovely apartment is a useful storage cupboard located in the hallway.



Features

- One bedroom ground floor retirement apartment
- Juliet Balcony overlooking the communal garden
- Good decorative order
- Fully fitted kitchen with integrated appliances
- Owners' lounge & kitchen with regular social events
- 24 hour Careline system for safety and security
- Great location close to the town centre & excellent transport links
- Lodge manager available 5 days a week
- Owners' private car park
- A Guest Suite is available for your friends and family to stay in. In addition, you are entitled to use of the Guest Suites at all Churchill Retirement Living developments across the country.



Key Information

Service Charge (Year ending 31st May 2024):
£4,283.77 per annum.

Approximate Area = 502 sq ft / 46.6 sq m
For identification only - Not to scale

Ground Rent: £575.00 per annum. To be reviewed
in June 2025.

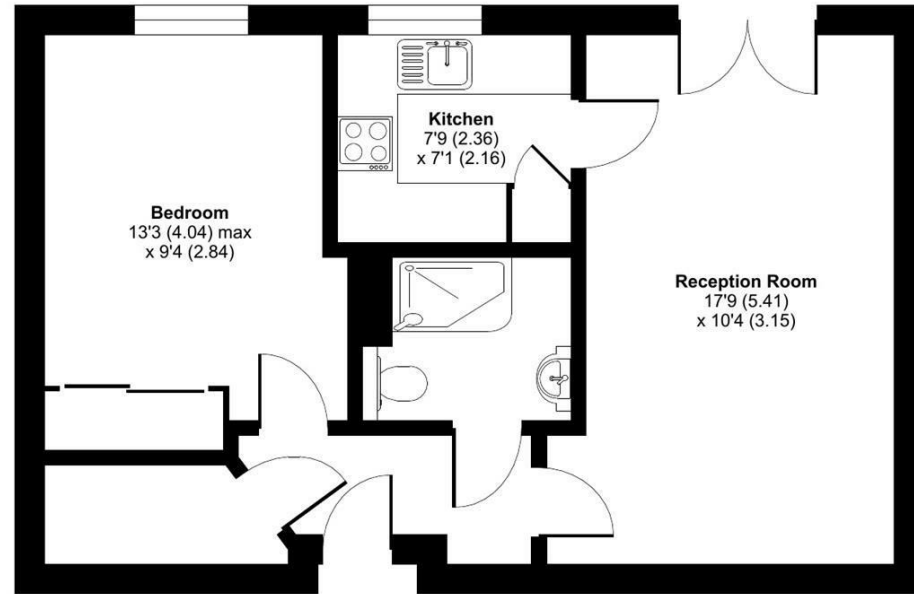
Council Tax: Band C

999 year Lease commencing 2018

Please check regarding Pets with Churchill Estates
Management. Any consents given in relation to pets
are subject to the terms of the lease and any further
rules and regulations made by Churchill Estates
Management.

Service charges include: Careline system, buildings
insurance, water and sewerage rates, communal
cleaning, ground source heating, utilities and
maintenance, garden maintenance, lift maintenance,
lodge manager and a contribution to the
contingency fund.

A 1% contribution of the final selling price to the
contingency fund is payable by the Seller upon
completion of the sale of the property.



EPC Rating: C



Floor plan produced in accordance with RICS Property Measurement Standards incorporating
International Property Measurement Standards (IPMS2 Residential). © nichecom 2024.
Produced for Churchill Estate Agents. REF: 1099947

DESCRIPTION Measurements are approximate and some may be maximum on irregular walls.

CONSENTS We have not had sight of any relevant building regulations, guarantees or planning consents all relevant documentation pertaining to this property should be checked with your legal advisor before exchanging contracts.

Property Particulars Disclaimer: These particulars are intended only as general guidance. The Company therefore gives notice that none of the material issued or visual depictions of any kind made on behalf of the Company can be relied upon as accurately describing any of the Specified Matters prescribed by any Order made under the Consumer Protection from Unfair Trading Regulations, 2008. Nor do they constitute a contract, part of a contract or a warranty.



☎ 0800 077 8717

✉ sales@churchillsl.co.uk

🌐 churchillsl.co.uk

Churchill
Sales & Lettings
Retirement Property Specialists