



Asking Price £285,000 Leasehold

2 Bedroom, Apartment - Retirement

10, Dutton Lodge Roper Street, Penrith, Cumbria, CA11 8FY



0800 077 8717



sales@churchillsl.co.uk



churchillsl.co.uk

**Churchill**  
Sales & Lettings  
Retirement Property Specialists

# Dutton Lodge

Tucked away in the heart of Penrith in Cumbria, Dutton Lodge is an attractive development of 54 one and two bedroom apartments with a beautiful landscaped gardens and an Owners' Lounge to relax in. Located just off junction 40 of the M6, Penrith is easily accessible by road, with many of the well-known tourist destinations of the Lake District National Park within easy reach.

Penrith town centre is full of charm and character offering a great selection of craft shops, book shops and antique shops. The town itself provides a wealth of independent shops, a main shopping area featuring a regular farmers' market and you will even find a M&S Food Hall just around the corner from Dutton Lodge. Any medical needs are well catered for with doctors' surgeries, dentists and medical centres nearby which are all served by Penrith Community Hospital. Everything you need really is right on your doorstep.

For those wishing to explore further afield Penrith has its' own bus and train station, serving destinations including Kendal and Keswick by bus and by train you are only a few hours from Glasgow, Edinburgh, Manchester, Birmingham and London ideal for meeting up with family or friends from near or far.

Dutton Lodge's manager is on hand throughout the day to support the owners and keep the development in perfect shape. They arrange many regular events in the Owners' Lounge from coffee mornings to games afternoons.

A Guest Suite is available for your friends and family to stay in. In addition, you are entitled to use of the Guest Suites at all Churchill Living developments across the country. Prices are available from the Lodge Manager.

Dutton Lodge has been designed with safety and security at the forefront. The apartment has an emergency Careline system installed, monitored by the onsite Lodge Manager during the day and 24 hours, 365 days a year by the Careline team. For additional security the apartment has Multi-point locking system to front door of the apartment, an intruder alarm, mains-connected smoke detector and video entry system.

Dutton Lodge is managed by the award winning Churchill Estates Management, working closely with Churchill Living and Churchill Sales & Lettings to maintain the highest standards of maintenance and service for every lodge and owner.

Dutton Lodge requires at least one apartment resident to be over the age of 60 with any second resident over the age of 55.



# Property Overview

Churchill Sales & Lettings are delighted to be marketing this stunning two bedroom ground floor apartment with a separate Cloakroom and Patio area. The property offers deceptively spacious accommodation throughout and is presented in fantastic order.

The Lounge offers ample space for living and dining room furniture and has a feature electric fireplace with attractive surround and a useful storage cupboard. A door opens onto the Patio area.

The Kitchen is accessed via the Lounge and offers a range of eye and base level units with working surfaces over and tiled splashbacks. There is a built in waist height oven, 4 ring ceramic hob with extractor hood over, a fridge, a frost-free freezer and washer/dryer. A window allows for light and ventilation.

Bedroom One is a generous double room with a useful built in mirrored wardrobe and plenty of space for additional bedroom furniture if required.

Bedroom Two is another good size room which could also be used as a separate Dining Room, Study or Hobby Room.

The Shower Room offers a large shower cubicle with handrail, heated towel rail, a WC and wash hand basin with vanity unit beneath.

Perfectly complementing this wonderful apartment are three useful storage cupboards located in the hallway.



# Features

- Two bedroom ground floor retirement apartment
- Own Patio area
- Separate Cloakroom
- Good decorative order throughout
- Lodge Manager available 5 days a week
- Fully fitted kitchen with integrated appliances
- Stunning Communal Gardens
- Owners private car parking
- A Guest Suite is available for your friends and family to stay in. In addition, you are entitled to use of the Guest Suites at all Churchill Living developments across the country



# Key Information

Service Charge (Year Ending 30th November 2024): £4,235.46 per annum.

Ground rent £625.00 per annum. To be reviewed in December 2027

Council Tax Band C

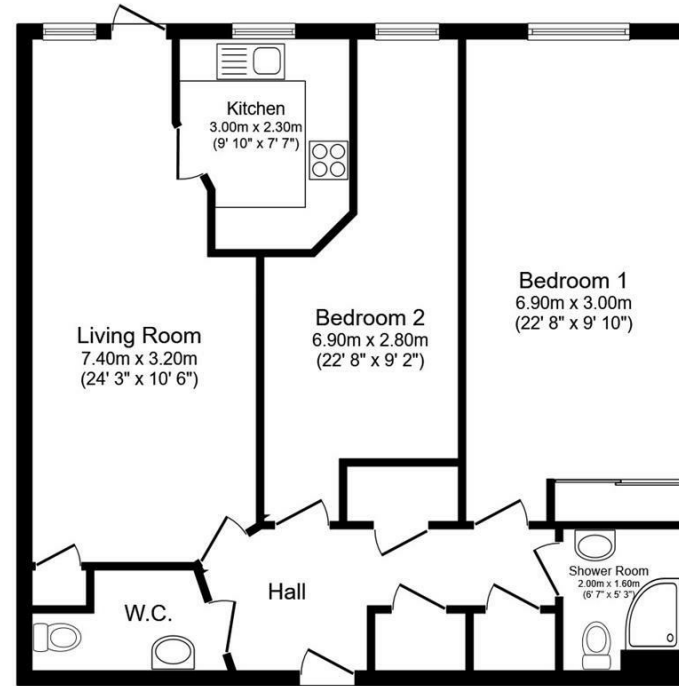
999 year lease commencing 2020

Please check regarding Pets with Churchill Estates Management. Any consents given in relation to pets are subject to the terms of the lease and any further rules and regulations made by Churchill Estates Management

Service charges include: Careline system, buildings insurance, water and sewerage rates, ground source heating, communal cleaning, utilities and maintenance, garden maintenance, lift maintenance, Lodge Manager and a contribution to the contingency fund.

A 1% contribution of the final selling price to the contingency fund is payable by the Seller upon completion of the sale of the property.

EPC Rating: B



Total floor area 83.3 m<sup>2</sup> (896 sq.ft.) approx

This floor plan is for illustrative purposes only. It is not drawn to scale. Any measurements, floor areas (including any total floor area), openings and orientation are approximate. No details are guaranteed, they cannot be relied upon for any purpose and they do not form part of any agreement. No liability is taken for any error, omission or misstatement. A party must rely upon its own inspection(s). Powered by [www.focalagent.com](http://www.focalagent.com)

DESCRIPTION Measurements are approximate and some may be maximum on irregular walls.

CONSENTS We have not had sight of any relevant building regulations, guarantees or planning consents all relevant documentation pertaining to this property should be checked with your legal advisor before exchanging contracts.

Property Particulars Disclaimer: These particulars are intended only as general guidance. The Company therefore gives notice that none of the material issued or visual depictions of any kind made on behalf of the Company can be relied upon as accurately describing any of the Specified Matters prescribed by any Order made under the Consumer Protection from Unfair Trading Regulations, 2008. Nor do they constitute a contract, part of a contract or a warranty.



☎ 0800 077 8717

✉ sales@churchillsl.co.uk

🌐 churchillsl.co.uk

**Churchill**  
Sales & Lettings  
Retirement Property Specialists