



Asking Price £299,950 Leasehold

1 Bedroom, Apartment - Retirement

24, Rothesay Lodge 2-10 Stuart Road, Highcliffe, Christchurch, Dorset, BH23 5FP

 0800 077 8717

 sales@churchillsl.co.uk

 churchillsl.co.uk

Churchill
Sales & Lettings
Retirement Property Specialists

Rothesay Lodge

Rothesay Lodge is a development of 48 one and two bedroom retirement apartments located in the traditional seaside town of Highcliffe-on-Sea. The development is ideally located for the High Street shops, amenities, places to eat and its award winning beaches. There are bus stops located directly outside, on Lymington Road.

Highcliffe-on-Sea, situated on the Dorset coast, is home to Highcliffe Castle, set in beautiful grounds on the clifftop and hosting events and exhibitions throughout the year. Highcliffe-on-Sea is situated on the edge of The New Forest National Park, a haven for wildlife and providing endless opportunities for walking, cycling and nature spotting. Close by you will find the Priory town of Christchurch and the market town of Lymington with Bournemouth Airport located under 10 miles away.

The Lodge manager is on hand throughout the day to support the Owners and keep the development in perfect shape as well as arranging many regular events in the Owners' Lounge from coffee mornings to games afternoons.

A Guest Suite is available for your friends and family to stay in. In addition, you are entitled to use of the Guest Suites at all Churchill Retirement Living developments across the country. Prices are available from the Lodge Manager.

Rothesay Lodge has been designed with safety and security at the forefront. The apartment has an emergency Careline system installed, monitored by the onsite Lodge Manager during the day and 24 hours, 365 days a year by the Careline team. A Careline integrated intruder alarm, secure video entry system and sophisticated fire and smoke detection systems throughout both the apartment and communal areas provide unrivalled peace of mind.

Rothesay Lodge is managed by the award winning Churchill Estates Management, working closely with Churchill Retirement Living and Churchill Sales & Lettings to maintain the highest standards of maintenance and service for every lodge and owner.

Rothesay Lodge requires at least one apartment resident to be over the age of 60 with any second resident over the age of 55.



Property Overview

****FINAL REMAINING NEW APARTMENT -
Call today to view****

Churchill Sales & Lettings are delighted to be marketing this Brand New one bedroom first floor apartment which is presented in fantastic order throughout. The property offers spacious accommodation and neutral decor .

The bright and airy Lounge is a good size room with ample space for living and dining room furniture. There is a power point and isolator switch for an electric fireplace and a door to the Juliet Balcony.

The Kitchen, which is accessed via the Lounge, offers a range of eye and base level units with working surfaces over and tiled splashbacks. There is a built in waist height oven, 4 ring electric hob with extractor hood over, a fridge, frost-free freezer and washer/dryer. A window lets in light and ventilation.

The Bedroom is a generous double room which has a useful built in mirror fronted wardrobe and offers plenty of space for additional bedroom furniture, if required.

The Shower Room enjoys a curved glass shower cubicle, a WC, a wash hand basin with vanity unit, non-slip flooring and a heated towel rail.

Perfectly complementing this wonderful apartment is a sizeable storage cupboard situated in the hallway.



Features

- Brand New
- One bedroom, first floor apartment
- Fully fitted kitchen with integrated appliances
- Lodge manager available 5 days a week
- Owners lounge & Kitchen with regular social events
- 24 Hour Careline system for safety and security
- A Guest Suite is available for your friends and family to stay in.
- Owners private car park
- Great location close to the town centre & excellent transport links



Key Information

Service Charge (Year Ending 31st May 2025):
£3,014.23 per annum.

Ground rent £575.00 per annum. To be reviewed
April 2025.

Council Tax Band C

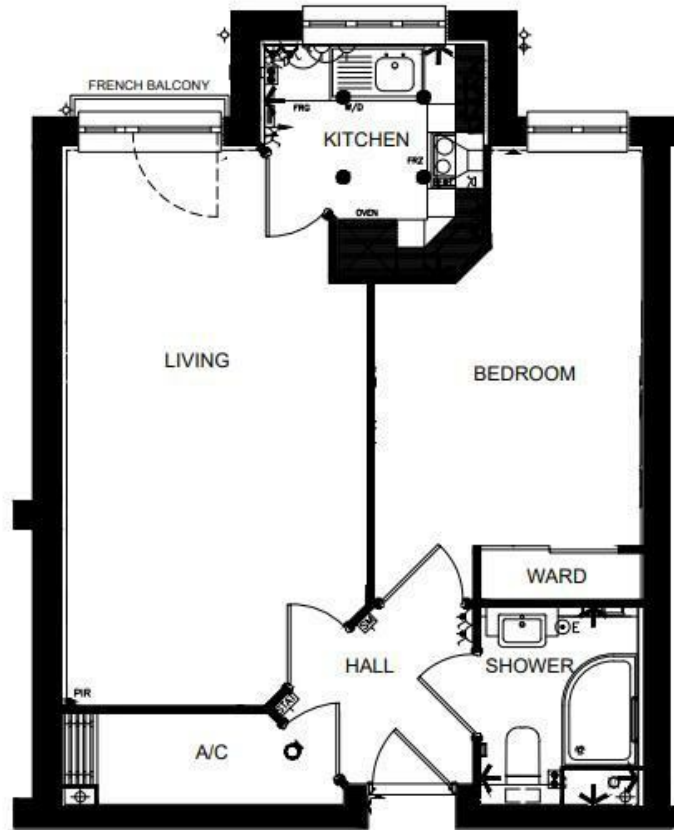
999 year Lease commencing 2018

Please check regarding Pets with Churchill Estates
Management. Any consents given in relation to pets
are subject to the terms of the lease and any further
rules and regulations made by Churchill Estates
Management.

Service charges include: Careline system, buildings
insurance, water and sewerage rates, ground source
heating, communal cleaning, utilities and
maintenance, garden maintenance, lift maintenance,
lodge manager and a contribution to the
contingency fund.

A 1% contribution of the final selling price to the
contingency fund is payable by the Seller upon
completion of the sale of the property.

EPC Rating: B



Living	Width	10'-5" [3180] max	Length	19'-5" [5910] max
Kitchen	Width	7'-8" [2325] max	Length	8'-1" [2465] max
Shower Room	Width	5'-6" [1665] max	Length	6'-11" [2100] max
Bedroom	Width	9'-3" [2830] max	Length	13'-10" [4210] max

DESCRIPTION Measurements are approximate and some may be maximum on irregular walls.

CONSENTS We have not had sight of any relevant building regulations, guarantees or planning consents all relevant documentation pertaining to this property should be checked with your legal advisor before exchanging contracts.

Property Particulars Disclaimer: These particulars are intended only as general guidance. The Company therefore gives notice that none of the material issued or visual depictions of any kind made on behalf of the Company can be relied upon as accurately describing any of the Specified Matters prescribed by any Order made under the Consumer Protection from Unfair Trading Regulations, 2008. Nor do they constitute a contract, part of a contract or a warranty.



☎ 0800 077 8717

✉ sales@churchillsl.co.uk

🌐 churchillsl.co.uk

Churchill
Sales & Lettings
Retirement Property Specialists