



32 Elmville Avenue

Scarborough, YO12 7NN

Guide Price £160,000



Ellis Hay are delighted to bring to the market this 2 bedroom terraced house in one of the ever popular Avenues close to Peasholm Park, the North Bay and all its many amenities and just a short walk to Scarborough Town Centre and beyond to the South Bay.

When briefly described the property consists of lounge, dining room and kitchen and to the ground floor. Upstairs there are 2 bedrooms and a bathroom. To the rear of the property is a courtyard garden.

In our opinion, this is a perfect blend of great location and period property.

Viewings are highly recommended, contact our friendly sales team to arrange a viewing at your earliest opportunity on 01723 350077. Sold with NO ONWARD CHAIN.



Lounge 11'8" x 13'8" (3.56 x 4.18)

Front facing room with UPVC windows, overhead lighting and radiator.

Dinning Room 12'5" x 12'2" (3.79 x 3.71)

Rear facing UPVC window, overhead lighting and radiator.

Kitchen 7'10" x 12'0" (2.40 x 3.66)

With a range of wall, base and drawer units, stainless steel sink and mixer tap and tiled splashback. Built in cooker and extractor fan over. Space for washing washing machine. Overhead lighting, UPVC window and door leading to rear garden.

Bedroom 1 14'11" x 12'0" (4.55 x 3.67)

Front facing UPVC windows, overhead lighting and radiators.

Bedroom 2 9'9" x 12'3" (2.99 x 3.74)

Rear facing window, overhead lighting and radiator.

Bathroom 7'10" x 9'7" (2.40 x 2.94)

Frosted window overlooking the side of the property. Three piece bathroom suite with overhead shower. Overhead lighting and radiator.

Outside

At the rear of the property is a courtyard garden and storage shed.

What 3 Words

Grew Plus Affair

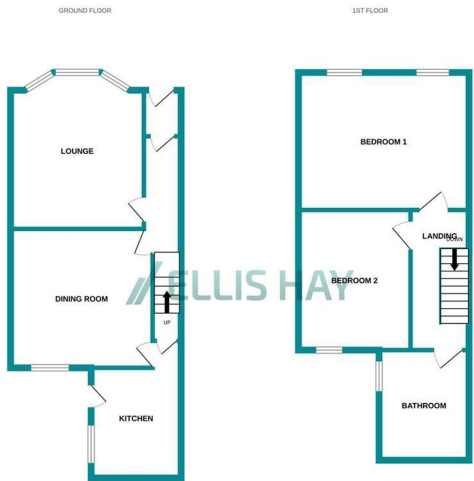
Area Map



Energy Efficiency Rating		
	Current	Potential
Very energy efficient - lower running costs		
(92 plus) A		
(81-91) B		84
(69-80) C	65	
(55-68) D		
(39-54) E		
(21-38) F		
(1-20) G		
Not energy efficient - higher running costs		
England & Wales	EU Directive 2002/91/EC	

Council Tax Band: B

Tenure: Freehold



Ellis Hay for themselves, for any joint agents and for the vendors or lessors of this property whose agents they are, give notice that (i) all the particulars are set out as a general outline only for the guidance of intending purchasers or lessees, and do not constitute, nor constitute part of, an offer or contract; (ii) all descriptions, dimensions, references to condition and necessary permissions for use and occupation, and other details are given in good faith and are believed to be correct but any intending purchasers or tenants should not rely on them as statements or representations of fact but must satisfy themselves by inspection or otherwise as to the correctness of each of them; (iii) no person in the employment of Ellis Hay, has any authority to make or give any representation or warranty whatever in relation to this property