

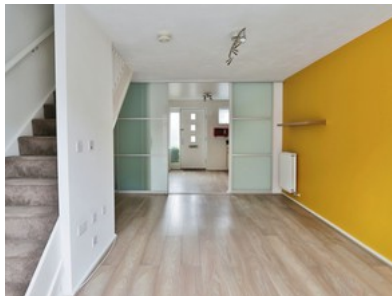
Sandwell Park, Kingwood

GUIDE PRICE £120,000



Check out the video!

- Well-presented Mid-terrace Property
- Situated In Highly Popular Kingwood
- Spacious Lounge & Modern Fitted Kitchen
- Two Bedrooms & Bathroom To First Floor
- Lovely Gardens & Allocated Parking
- Freehold
- Council Tax Band A
- Epc Rating C



Bedroom 2 Bathroom 1 Reception 1

Guide Price

£120,000