

Dover Branch:
T: 01304 206666

Deal Branch:
T: 01304 365454

Folkestone Branch:
T: 01303 210777



Herne Bay Branch:
T: 01227 360226

Thanet Branch:
T: 01843 210111

Out of hours:
T: 07970 059561

Asking price of £375,000

Salisbury Road, Dover, CT16

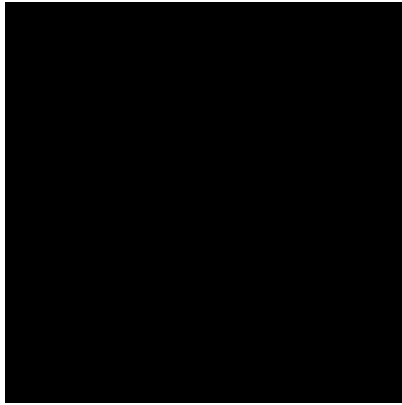


- Attractive Period Family Home
- Arranged Over Four Floors
- Four Double Bedrooms
- Bay Fronted Dining Area
- Stylish Kitchen & Separate Utility Area & Storage
- Large Double Aspect Living Room
- First Floor Bathroom & Second Floor Shower Room
- Master Bedroom with Balcony
- Generous Rear Garden

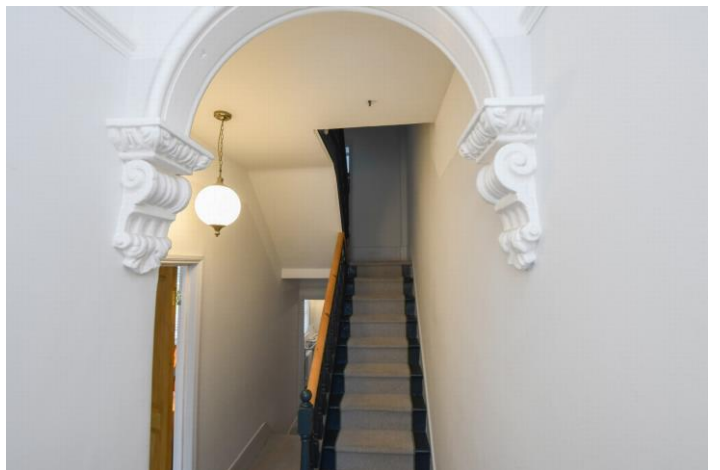
Set within a highly admired location, this attractive Victorian property is full of versatility and charm. Arranged over four floors, this delightful property offers on the ground floor a bay fronted dining room which has a cast iron wood burner and leads to a stylish, modern kitchen with an extensive range of fitting wall & base units, integrated appliances, a breakfast bar and French doors to the rear garden. Additionally, there is a separate utility room and useful fitted storage. To the first floor, there is a large, double aspect living room which is the perfect place to relax and unwind. Furthermore, there is a modern family bathroom with a freestanding bath. To the second floor there are two double bedrooms, the master bedroom boasts French doors to a balcony enjoying glorious views across Dover, together with a sleek shower room to the rear. There are two further double bedrooms to the third floor. Externally, the property has a generous rear garden surrounded by a selection of mature trees and shrubs and a timber garden shed. There is a large driveway to the front providing ample off road parking. Salisbury Road boasts many of Dover's noted and imposing properties. The area is convenient for Dover Town Centre with its selection of shopping, educational and recreational facilities along with the Docks and seafront. There are a number of excellent primary and secondary schools within walking distance including the prestigious Dover Grammar School for Girls. Additionally, Dover Mainline Railway Station is only a short walk away providing services to Canterbury, Ramsgate and the high-speed train to London St Pancras in just over an hour. The location is perfect for rural walks with iconic views from Dover Castle and the famous White Cliffs of Dover or the Langdon Cliffs to South Foreland Lighthouse. The Cathedral City of Canterbury is only a 20-minute drive which has an array of shops, restaurants and nightlife.

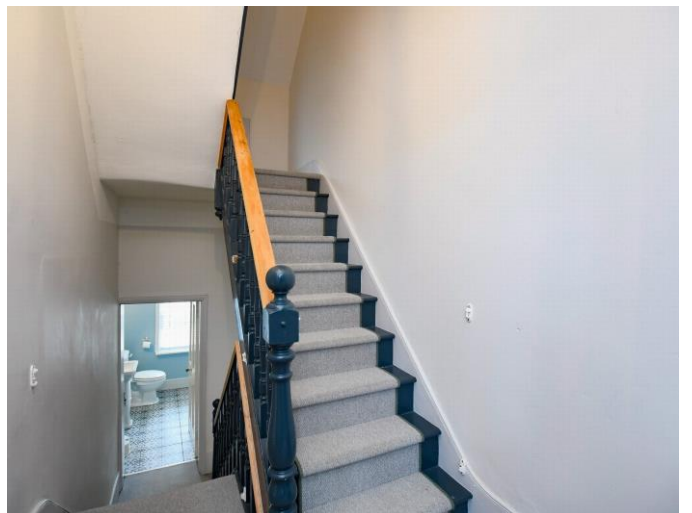
Salisbury Road, Dover, CT16

-
-
-











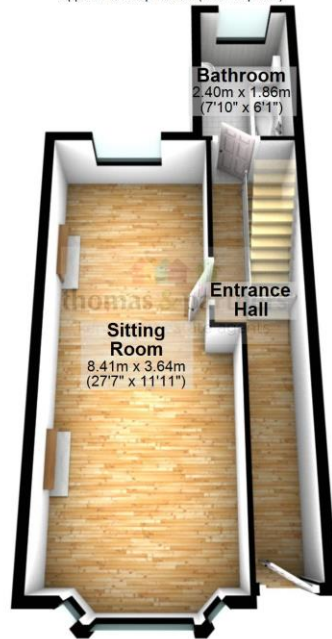
Ground Floor

Approx. 48.5 sq. metres (522.2 sq. feet)



First Floor

Approx. 46.3 sq. metres (498.1 sq. feet)



Second Floor

Approx. 42.1 sq. metres (453.3 sq. feet)



Third Floor

Approx. 29.5 sq. metres (317.6 sq. feet)



Total area: approx. 166.4 sq. metres (1791.2 sq. feet)

All measurements are for guidance and reference only and plan is not to scale.
Plan produced using PlanUp.

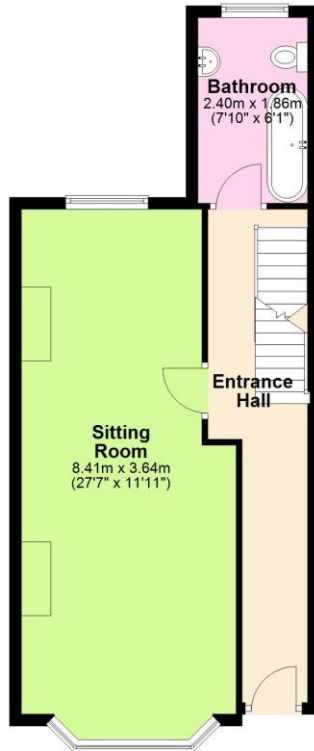
Ground Floor

Approx. 48.5 sq. metres (522.2 sq. feet)



First Floor

Approx. 46.3 sq. metres (498.1 sq. feet)



Second Floor

Approx. 42.1 sq. metres (453.3 sq. feet)



Third Floor

Approx. 29.5 sq. metres (317.6 sq. feet)

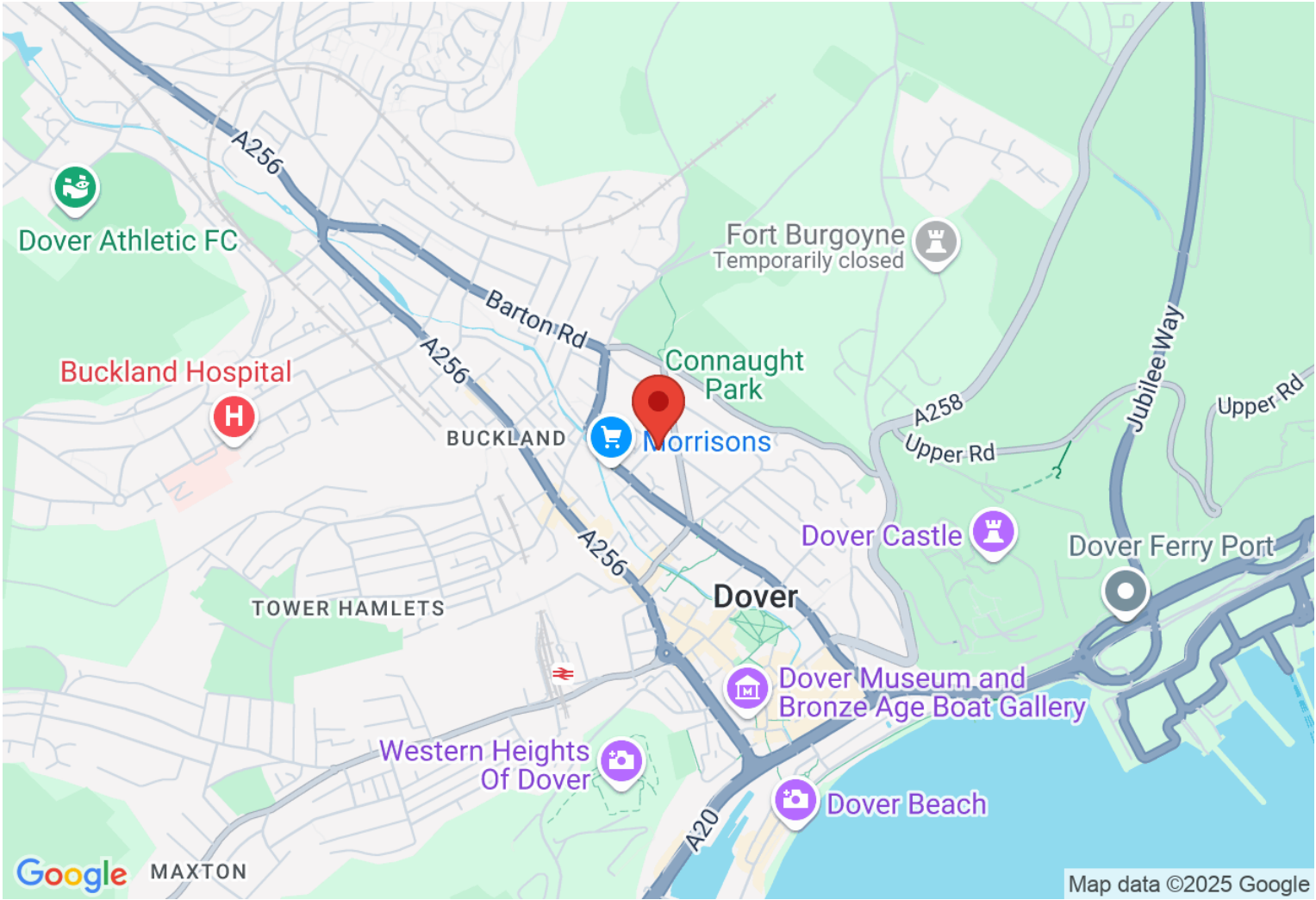


Total area: approx. 166.4 sq. metres (1791.2 sq. feet)

All measurements are for guidance and reference only and plan is not to scale.
Plan produced using PlanUp.

Directions

Location



VIEWING BY APPOINTMENT WITH AGENTS THOMAS AND PARTNERS
10 Victoria Rd, Deal, Kent, CT14 7AP T: 01304 365454 E: enquiries@tapestates.com W: www.tapestates.com

General: While we endeavour to make our sales particulars fair, accurate and reliable, they are only a general guide to the property and, accordingly, if there is any point which is of particular importance to you, please contact the office and we will be pleased to check the position for you, especially if you are contemplating travelling some distance to view the property.

Measurements: These approximate room sizes are only intended as general guidance. You must verify the dimensions carefully before ordering carpets or any built-in furniture. Services: Please note we have not tested the services or any of the equipment or appliances in this property, accordingly we strongly advise prospective buyers to commission their own survey or service reports before finalizing their offer to purchase.

THESE PARTICULARS ARE ISSUED IN GOOD FAITH BUT DO NOT CONSTITUTE REPRESENTATIONS OF FACT OR FORM PART OF ANY OFFER OR CONTRACT. THE MATTERS REFERRED TO IN THESE PARTICULARS SHOULD BE INDEPENDENTLY VERIFIED BY PROSPECTIVE BUYERS OR TENANTS. NEITHER THOMAS AND PARTNERS NOR ANY OF ITS EMPLOYEES OR AGENTS HAS ANY AUTHORITY TO MAKE OR GIVE ANY REPRESENTATION OR WARRANTY WHATEVER IN RELATION TO THIS PROPERTY.

YOUR HOME IS AT RISK IF YOU DO NOT KEEP UP REPAYMENTS ON A MORTGAGE OR OTHER LOAN SECURED ON IT.
Written quotations available on request. All loans secured on property. Life assurance is usually required.