

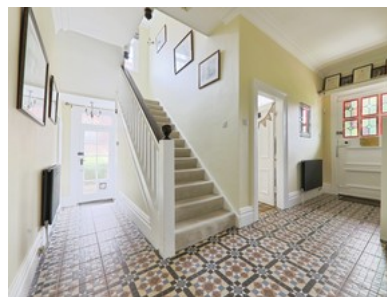
Davenport Avenue, Hesse

Inviting Offers Between £725,000- £750,000

FINE & COUNTRY



- Location: In The Highly Desirable Southfield Conservation Area Of Hesse, Close To The Town Centre, Humber Bridge, And Riverside Walks
 - Size: Over 3200 Sq Ft Of Living Space Spread Across Three Floors
 - Bedrooms: Up To 7 Bedrooms, Offering Versatile Use For A Home Office, Gym, Or Games Room
 - Ground Floor: Three Spacious Reception Rooms, A 26ft X 13ft Dining Kitchen With Bi-fold Doors To The Outdoor Area, Plus A Downstairs Wc
 - Plot: Situated On A Generous Acre Plot With An Excellent Outdoor Entertaining Space
 - Parking: Private Driveway With Space For Multiple Cars
 - Year Built: 1905, Retaining Classic Edwardian Charm With High Ceilings And Large Bay Windows
 - Freehold
- Bedroom 7 Bathroom 2 Reception 3
- Epc Rating E



Guide Price

£725,000