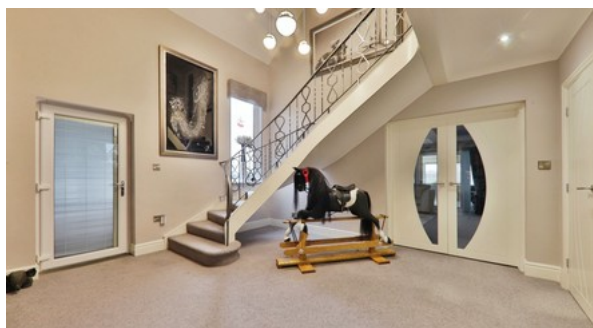


Malton Road, Cherry Burton

inviting offer between ~~£1,000,000~~ **£950,000** 🚗 4



- ◇ Contemporary Lifestyle In The Country
- ◇ Edge Of Village Location Close To Beverley
- ◇ Approx Half Acre Plot With Views Over The Village
- ◇ Exquisite Suite With Dressing Room & En-suite
- ◇ Long Private Drive With Turning Area & Garage
- ◇ Freehold
- ◇ Council Tax Band F
- ◇ Epc D



Guide Price

£950,000